

Datasheet for ABIN2778648  
**anti-TUBB2A antibody (N-Term)**



[Go to Product page](#)

2 Images

## Overview

Quantity:	100 µL
Target:	TUBB2A
Binding Specificity:	N-Term
Reactivity:	Human, Mouse, Rat, Rabbit, Horse, Guinea Pig, Cow, Sheep, Dog, Zebrafish (Danio rerio)
Host:	Rabbit
Clonality:	Polyclonal
Conjugate:	This TUBB2A antibody is un-conjugated
Application:	Western Blotting (WB)

## Product Details

Immunogen:	The immunogen is a synthetic peptide directed towards the N terminal region of human TUBB2A
Sequence:	MAKRSRSEDE DDDLQYADHD YEVPQQKGLK KLWNRVKWTR DEDDKLKKLV
Predicted Reactivity:	Cow: 100%, Dog: 100%, Guinea Pig: 100%, Horse: 100%, Human: 100%, Mouse: 100%, Rabbit: 100%, Rat: 100%, Sheep: 100%, Zebrafish: 86%
Characteristics:	This is a rabbit polyclonal antibody against TUBB2A. It was validated on Western Blot using a cell lysate as a positive control.
Purification:	Affinity Purified

## Target Details

Target:	TUBB2A
---------	--------

## Target Details

Alternative Name:	TUBB2A ( <a href="#">TUBB2A Products</a> )
Background:	<p>TUBB2A belongs to the tubulin family. Tubulin is the major constituent of microtubules. It binds two moles of GTP, one at an exchangeable site on the beta chain and one at a non-exchangeable site on the alpha-chain.</p> <p>Alias Symbols: TUBB, TUBB2, dJ40E16.7</p> <p>Protein Interaction Partner: HUWE1, UBC, TPT1, TP53, EMD, SUMO2, CDC20, CEP76, FAM96B, TUBGCP4, TUBGCP2, NEDD8, ASB4, RNF2, rev, TUBA1C, NSFL1C, UBXN1, TWF2, TUBB4B, PLAA, PAPSS2, YWHAЕ, TUFM, TUBA4A, QARS, PFKM, PCBP1, HK1, CAPN2, TUBB8, TUBB, LATS2, UPF2, EGFR, ADRB2, SOX2, CD81, P</p> <p>Protein Size: 445</p>
Molecular Weight:	50 kDa
Gene ID:	7280
NCBI Accession:	<a href="#">NM_001069</a> , <a href="#">NP_001060</a>
UniProt:	<a href="#">Q13885</a>
Pathways:	<a href="#">Microtubule Dynamics</a> , <a href="#">M Phase</a>

## Application Details

Application Notes:	Optimal working dilutions should be determined experimentally by the investigator.
Comment:	Antigen size: 445 AA
Restrictions:	For Research Use only

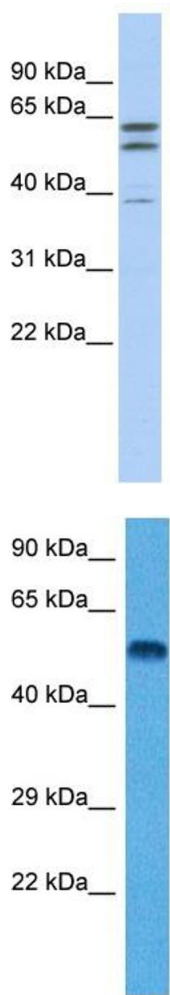
## Handling

Format:	Liquid
Concentration:	Lot specific
Buffer:	Liquid. Purified antibody supplied in 1x PBS buffer with 0.09 % (w/v) sodium azide and 2 % sucrose.
Preservative:	Sodium azide
Precaution of Use:	This product contains Sodium azide: a POISONOUS AND HAZARDOUS SUBSTANCE which should be handled by trained staff only.
Handling Advice:	Avoid repeated freeze-thaw cycles.

Handling

Storage:	-20 °C
Storage Comment:	For short term use, store at 2-8°C up to 1 week. For long term storage, store at -20°C in small aliquots to prevent freeze-thaw cycles.

Images



**Western Blotting**

**Image 1.** WB Suggested Anti-TUBB2A Antibody Titration: 0.2-1 ug/ml ELISA Titer: 1:62500 Positive Control: 721\_B cell lysate

**Western Blotting**

**Image 2.** Host: Rat Target Name: TUBB2A Sample Tissue: Rat Brain Antibody Dilution: 1ug/ml