

Datasheet for ABIN2778655  
**anti-GAPDHS antibody (N-Term)**



[Go to Product page](#)

1 Image

## Overview

Quantity:	100 µL
Target:	GAPDHS
Binding Specificity:	N-Term
Reactivity:	Human, Mouse, Rat, Guinea Pig, Horse, Rabbit, Dog
Host:	Rabbit
Clonality:	Polyclonal
Conjugate:	This GAPDHS antibody is un-conjugated
Application:	Western Blotting (WB)

## Product Details

Immunogen:	The immunogen is a synthetic peptide directed towards the N terminal region of human GAPDHS
Sequence:	PFIDPEYMVY MFKYDSTHGR YKGSVEFRNG QLVVDNHEIS VYQCCKPKQI
Predicted Reactivity:	Dog: 92%, Guinea Pig: 79%, Horse: 85%, Human: 100%, Mouse: 79%, Rabbit: 77%, Rat: 77%
Characteristics:	This is a rabbit polyclonal antibody against GAPDHS. It was validated on Western Blot using a cell lysate as a positive control.
Purification:	Affinity Purified

## Target Details

Target:	GAPDHS
---------	--------

### Target Details

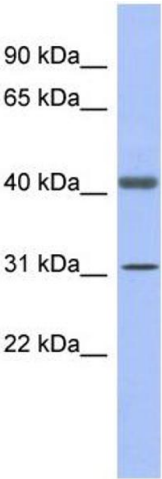
Alternative Name:	GAPDHS ( <a href="#">GAPDHS Products</a> )
Background:	<p>GAPDHS is a protein belonging to the glyceraldehyde-3-phosphate dehydrogenase family of enzymes that play an important role in carbohydrate metabolism. Like its somatic cell counterpart, this sperm-specific enzyme functions in a nicotinamide adenine dinuc</p> <p>Alias Symbols: GAPD2, GAPDH-2, GAPDS, HSD-35</p> <p>Protein Interaction Partner: APP, SH3BP4, NTHL1,</p> <p>Protein Size: 408</p>
Molecular Weight:	44 kDa
Gene ID:	26330
NCBI Accession:	<a href="#">NM_014364</a> , <a href="#">NP_055179</a>
UniProt:	<a href="#">O14556</a>
Pathways:	<a href="#">Regulation of Carbohydrate Metabolic Process</a>

### Application Details

Application Notes:	Optimal working dilutions should be determined experimentally by the investigator.
Comment:	Antigen size: 408 AA
Restrictions:	For Research Use only

### Handling

Format:	Liquid
Concentration:	Lot specific
Buffer:	Liquid. Purified antibody supplied in 1x PBS buffer with 0.09 % (w/v) sodium azide and 2 % sucrose.
Preservative:	Sodium azide
Precaution of Use:	This product contains Sodium azide: a POISONOUS AND HAZARDOUS SUBSTANCE which should be handled by trained staff only.
Handling Advice:	Avoid repeated freeze-thaw cycles.
Storage:	-20 °C
Storage Comment:	For short term use, store at 2-8°C up to 1 week. For long term storage, store at -20°C in small aliquots to prevent freeze-thaw cycles.



**Western Blotting**

**Image 1.** WB Suggested Anti-GAPDHS Antibody Titration: 0.2-1 ug/ml ELISA Titer: 1:312500 Positive Control: Human Spleen