

Datasheet for ABIN2778664  
**anti-PRMT1 antibody (Middle Region)**[Go to Product page](#)

## 2 Images

## Overview

Quantity:	100 µL
Target:	PRMT1
Binding Specificity:	Middle Region
Reactivity:	Human, Mouse, Rat, Dog, Rabbit, Cow, Horse, Zebrafish (Danio rerio), Guinea Pig
Host:	Rabbit
Clonality:	Polyclonal
Conjugate:	This PRMT1 antibody is un-conjugated
Application:	Western Blotting (WB), Immunohistochemistry (IHC)

## Product Details

Immunogen:	The immunogen is a synthetic peptide directed towards the middle region of human PRMT1
Sequence:	ESMLNTVLYA RDKWLAPDGL IFPD RATLYV TAIEDRQYKD YKIHWWENVY
Predicted Reactivity:	Cow: 100%, Dog: 100%, Guinea Pig: 100%, Horse: 100%, Human: 100%, Mouse: 100%, Rabbit: 100%, Rat: 100%, Zebrafish: 100%
Characteristics:	This is a rabbit polyclonal antibody against PRMT1. It was validated on Western Blot and immunohistochemistry.
Purification:	Protein A purified

## Target Details

Target:	PRMT1
---------	-------

## Target Details

Alternative Name:	PRMT1 ( <a href="#">PRMT1 Products</a> )
Background:	<p>PRMT1 is a protein arginine methyltransferase that functions as a histone methyltransferase specific for H4. The HRMT1L2 gene encodes a protein arginine methyltransferase that functions as a histone methyltransferase specific for H4 (see MIM 602822). [supplied by OMIM].</p> <p>Alias Symbols: ANM1, HCP1, IR1B4, HRMT1L2</p> <p>Protein Interaction Partner: PRMT1, FUS, PRMT8, WDYHV1, SPEG, HNRNPR, HUWE1, SUMO2, UBC, DGCR8, Fbxl16, SUZ12, VHL, OFCC1, FAM9A, SAMD3, C20orf196, SPSB2, C4orf17, FAM83D, SPSB1, C17orf53, COPS7B, MLST8, GRHL3, GPATCH2L, DCAF16, DCAF8, SPAG8, ZNF451, WDFY3, VPS72, TBX6, PPARA, NCL, M</p> <p>Protein Size: 361</p>
Molecular Weight:	40 kDa
Gene ID:	3276
NCBI Accession:	<a href="#">NM_001536</a> , <a href="#">NP_001527</a>
UniProt:	<a href="#">Q99873</a>

## Application Details

Application Notes:	Optimal working dilutions should be determined experimentally by the investigator.
Comment:	Antigen size: 361 AA
Restrictions:	For Research Use only

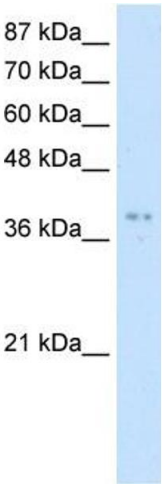
## Handling

Format:	Liquid
Concentration:	Lot specific
Buffer:	Liquid. Purified antibody supplied in 1x PBS buffer with 0.09 % (w/v) sodium azide and 2 % sucrose.
Preservative:	Sodium azide
Precaution of Use:	This product contains Sodium azide: a POISONOUS AND HAZARDOUS SUBSTANCE which should be handled by trained staff only.
Handling Advice:	Avoid repeated freeze-thaw cycles.
Storage:	-20 °C

Handling

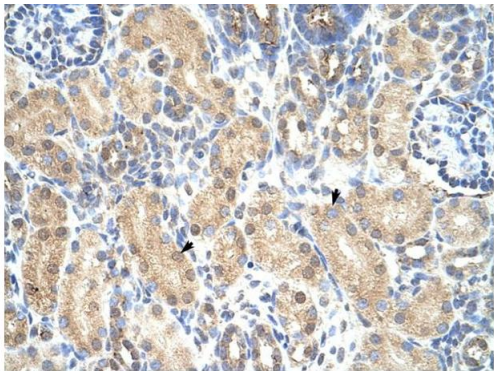
Storage Comment: For short term use, store at 2-8°C up to 1 week. For long term storage, store at -20°C in small aliquots to prevent freeze-thaw cycles.

Images



**Western Blotting**

**Image 1.** WB Suggested Anti-PRMT1 Antibody Titration: 5.0ug/ml ELISA Titer: 1:1562500 Positive Control: Jurkat cell lysate



Rabbit Anti-PRMT1 Antibody  
Catalog Number: ARP40198  
Lot Number: QC9983  
Paraffin Embedded Tissue: Human Kidney  
Cells with Positive label: Epithelial cells of renal tubule (Indicated with Arrows)  
Antibody Concentration: 4.0-8.0 µg/ml  
Magnification: 400X

**Immunohistochemistry**

**Image 2.** Rabbit Anti-PRMT1 Antibody Paraffin Embedded Tissue: Human Kidney Cellular Data: Epithelial cells of renal tubule Antibody Concentration: 4.0-8.0 ug/ml Magnification: 400X