



[Go to Product page](#)

Datasheet for ABIN2778672
anti-RPL9 antibody (C-Term)

2 Images

Overview

Quantity:	100 µL
Target:	RPL9
Binding Specificity:	C-Term
Reactivity:	Human, Mouse, Rat, Dog, Zebrafish (Danio rerio), Rabbit, Cow, Horse, Guinea Pig
Host:	Rabbit
Clonality:	Polyclonal
Conjugate:	This RPL9 antibody is un-conjugated
Application:	Western Blotting (WB)

Product Details

Immunogen:	The immunogen is a synthetic peptide directed towards the C terminal region of human RPL9
Sequence:	GVACSVSQAQ KDELILEGND IELVSNSAAL IQQATTVKNK DIRKFLDGIY
Predicted Reactivity:	Cow: 100%, Dog: 100%, Guinea Pig: 100%, Horse: 100%, Human: 100%, Mouse: 100%, Rabbit: 100%, Rat: 100%, Zebrafish: 100%
Characteristics:	This is a rabbit polyclonal antibody against RPL9. It was validated on Western Blot using a cell lysate as a positive control.
Purification:	Protein A purified

Target Details

Target:	RPL9
---------	------

Target Details

Alternative Name: [RPL9 \(RPL9 Products\)](#)

Background: RPL9 is a ribosomal protein that is a component of the 60S subunit. RPL9 belongs to the L6P family of ribosomal proteins. It is located in the cytoplasm. As is typical for genes encoding ribosomal proteins, there are multiple processed pseudogenes of this gene dispersed through the genome. Ribosomes, the organelles that catalyze protein synthesis, consist of a small 40S subunit and a large 60S subunit. Together these subunits are composed of 4 RNA species and approximately 80 structurally distinct proteins. This gene encodes a ribosomal protein that is a component of the 60S subunit. The protein belongs to the L6P family of ribosomal proteins. It is located in the cytoplasm. As is typical for genes encoding ribosomal proteins, there are multiple processed pseudogenes of this gene dispersed through the genome. Two alternatively spliced transcript variants encoding the same protein have been found for this gene.

Alias Symbols: L9, NPC-A-16

Protein Interaction Partner: TRIM37, FUS, DHPS, SPERT, FAM9B, TIFA, CEP76, HMBOX1, KXD1, HOMEZ, ZBTB7B, MTUS2, PNMA2, CALCOCO2, ZBTB14, VCP, UBC, ZBTB8A, CCDC184, STAU1, RPA3, RPA2, RPA1, EED, RNF2, TARDBP, IGSF8, ICAM1, PAN2, UBL4A, VCAM1, ITGA4, FN1, ESR1, RPL32, RPLPOP6, RPL10L, V

Protein Size: 192

Molecular Weight: 21 kDa

Gene ID: 6133

NCBI Accession: [NM_000661](#), [NP_000652](#)

UniProt: [P32969](#)

Application Details

Application Notes: Optimal working dilutions should be determined experimentally by the investigator.

Comment: Antigen size: 192 AA

Restrictions: For Research Use only

Handling

Format: Liquid

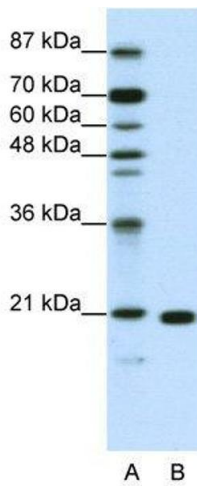
Concentration: Lot specific

Buffer: Liquid. Purified antibody supplied in 1x PBS buffer with 0.09 % (w/v) sodium azide and 2 % sucrose.

Handling

Preservative:	Sodium azide
Precaution of Use:	This product contains Sodium azide: a POISONOUS AND HAZARDOUS SUBSTANCE which should be handled by trained staff only.
Handling Advice:	Avoid repeated freeze-thaw cycles.
Storage:	-20 °C
Storage Comment:	For short term use, store at 2-8°C up to 1 week. For long term storage, store at -20°C in small aliquots to prevent freeze-thaw cycles.

Images



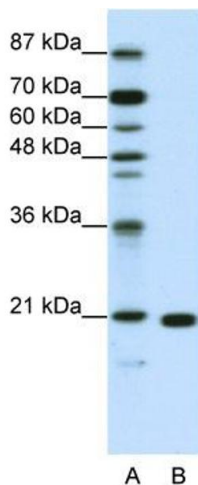
Western Blotting

Image 1. WB Suggested Anti-RPL9

Antibody Titration: 1.25 µg/mL ELISA Titer: 1:312500

Positive Control: Jurkat cell lysate

RPL9 is supported by BioGPS gene expression data to be expressed in Jurkat



Western Blotting

Image 2. WB Suggested Anti-RPL9 Antibody Titration:

1.25ug/ml ELISA Titer: 1:312500 Positive Control: Jurkat cell lysate RPL9 is supported by BioGPS gene expression data to be expressed in Jurkat