

Datasheet for ABIN2778674
anti-RPL6 antibody (N-Term)[Go to Product page](#)

2 Images

Overview

Quantity:	100 µL
Target:	RPL6
Binding Specificity:	N-Term
Reactivity:	Human, Mouse, Rat, Dog, Guinea Pig, Horse, Cow
Host:	Rabbit
Clonality:	Polyclonal
Conjugate:	This RPL6 antibody is un-conjugated
Application:	Western Blotting (WB)

Product Details

Immunogen:	The immunogen is a synthetic peptide directed towards the N terminal region of human RPL6
Sequence:	AGEKVEKPDY KEKKPEAKKV DAGGKVKKGN LKAKPKKKGK PHCSRNPVLV
Predicted Reactivity:	Cow: 100%, Dog: 100%, Guinea Pig: 100%, Horse: 86%, Human: 100%, Mouse: 87%, Rat: 85%
Characteristics:	This is a rabbit polyclonal antibody against RPL6. It was validated on Western Blot using a cell lysate as a positive control.
Purification:	Protein A purified

Target Details

Target:	RPL6
Alternative Name:	RPL6 (RPL6 Products)

Target Details

Background: RPL6 is a ribosomal protein that is a component of the 60S subunit. RPL6 belongs to the L6E family of ribosomal proteins. It is located in the cytoplasm. The protein can bind specifically to domain C of the tax-responsive enhancer element of human T-cell leukemia virus type 1, and it has been suggested that the protein may participate in tax-mediated transactivation of transcription. As is typical for genes encoding ribosomal proteins, there are multiple processed pseudogenes of this gene dispersed through the genome. Ribosomes, the organelles that catalyze protein synthesis, consist of a small 40S subunit and a large 60S subunit. Together these subunits are composed of 4 RNA species and approximately 80 structurally distinct proteins. This gene encodes a ribosomal protein that is a component of the 60S subunit. The protein belongs to the L6E family of ribosomal proteins. It is located in the cytoplasm. The protein can bind specifically to domain C of the tax-responsive enhancer element of human T-cell leukemia virus type 1, and it has been suggested that the protein may participate in tax-mediated transactivation of transcription. As is typical for genes encoding ribosomal proteins, there are multiple processed pseudogenes of this gene dispersed through the genome. Two alternatively spliced transcript variants encoding the same protein have been found for this gene.

Alias Symbols: L6, TXREB1, SHUJUN-2, TAXREB107

Protein Interaction Partner: HUWE1, UBC, ELF3, CEP250, TUBG1, TP53, SUMO3, STAU1, SUMO1, MDM2, WWOX, RPA3, RPA2, RPA1, RNF2, rev, PARK2, FBXO6, TARDBP, IGSF8, ICAM1, CD81, PAN2, IL7R, FN1, CSNK2A1, SEL1L, IVNS1ABP, UBL4A, NPAS2, ND1, EIF4A3, YWHAE, VCP, MAGOH, ESR1, NOLC1, DDX21, RPL

Protein Size: 288

Molecular Weight: 32 kDa

Gene ID: 6128

NCBI Accession: [NM_001024662](#), [NP_001019833](#)

UniProt: [Q02878](#)

Application Details

Application Notes: Optimal working dilutions should be determined experimentally by the investigator.

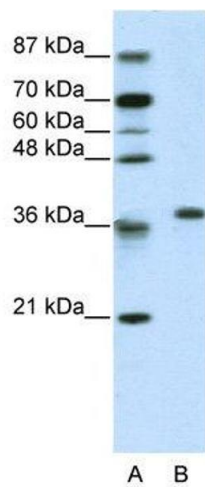
Comment: Antigen size: 288 AA

Restrictions: For Research Use only

Handling

Format:	Liquid
Concentration:	Lot specific
Buffer:	Liquid. Purified antibody supplied in 1x PBS buffer with 0.09 % (w/v) sodium azide and 2 % sucrose.
Preservative:	Sodium azide
Precaution of Use:	This product contains Sodium azide: a POISONOUS AND HAZARDOUS SUBSTANCE which should be handled by trained staff only.
Handling Advice:	Avoid repeated freeze-thaw cycles.
Storage:	-20 °C
Storage Comment:	For short term use, store at 2-8°C up to 1 week. For long term storage, store at -20°C in small aliquots to prevent freeze-thaw cycles.

Images



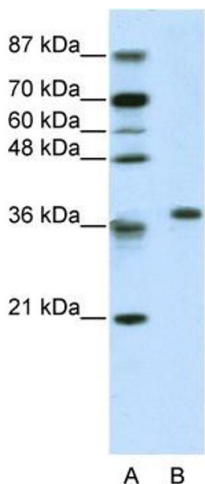
Western Blotting

Image 1. WB Suggested Anti-RPL6

Antibody Titration: 2.5 µg/mL ELISA Titer: 1:2500

Positive Control: Jurkat cell lysate

RPL6 is supported by BioGPS gene expression data to be expressed in Jurkat



Western Blotting

Image 2. WB Suggested Anti-RPL6 Antibody Titration:

2.5ug/ml ELISA Titer: 1:62500 Positive Control: Jurkat cell lysate RPL6 is supported by BioGPS gene expression data to be expressed in Jurkat