

Datasheet for ABIN2778675 anti-RPL8 antibody (C-Term)



[Go to Product page](#)

2 Images

1 Publication

Overview

Quantity:	100 µL
Target:	RPL8
Binding Specificity:	C-Term
Reactivity:	Human, Mouse, Rat, Dog, Zebrafish (Danio rerio), Cow, Rabbit, Guinea Pig, Saccharomyces cerevisiae
Host:	Rabbit
Clonality:	Polyclonal
Conjugate:	This RPL8 antibody is un-conjugated
Application:	Western Blotting (WB), Immunohistochemistry (IHC)

Product Details

Immunogen:	The immunogen is a synthetic peptide directed towards the C terminal region of human RPL8
Sequence:	KKVISSANRA VGVVAGGGR IDKPILKAGR AYHKYKAKRN CWPRVRGVAM
Predicted Reactivity:	Cow: 100%, Dog: 100%, Guinea Pig: 100%, Human: 100%, Mouse: 100%, Rabbit: 100%, Rat: 100%, Yeast: 93%, Zebrafish: 100%
Characteristics:	This is a rabbit polyclonal antibody against RPL8. It was validated on Western Blot and immunohistochemistry.
Purification:	Protein A purified

Target Details

Target:	RPL8
---------	------

Target Details

Alternative Name: RPL8 ([RPL8 Products](#))

Background: Ribosomes, the organelles that catalyze protein synthesis, consist of a small 40S subunit and a large 60S subunit. Together these subunits are composed of 4 RNA species and approximately 80 structurally distinct proteins. RPL8 is a ribosomal protein that is a component of the 60S subunit. The protein belongs to the L2P family of ribosomal proteins. It is located in the cytoplasm. Ribosomes, the organelles that catalyze protein synthesis, consist of a small 40S subunit and a large 60S subunit. Together these subunits are composed of 4 RNA species and approximately 80 structurally distinct proteins. This gene encodes a ribosomal protein that is a component of the 60S subunit. The protein belongs to the L2P family of ribosomal proteins. It is located in the cytoplasm. In rat, the protein associates with the 5.8S rRNA, very likely participates in the binding of aminoacyl-tRNA, and is a constituent of the elongation factor 2-binding site at the ribosomal subunit interface. Alternatively spliced transcript variants encoding the same protein exist. As is typical for genes encoding ribosomal proteins, there are multiple processed pseudogenes of this gene dispersed through the genome.

Alias Symbols: L8

Protein Interaction Partner: TP53, HUWE1, SUMO2, TUBGCP3, CEP250, STAU1, UBC, MDM2, ZBTB1, EED, RPS25, RPL28, PARK2, FBXO6, UPF2, TARDBP, ICAM1, IGSF8, PAN2, ITGA4, IL7R, FN1, DPH3, UBL4A, VCAM1, EIF4A3, PA2G4, MAGOH, ESR1, RPLP0P6, RPL10L, TUBA1C, ATF7IP, RPL36, TXN2, PPT2, RPL23, R

Protein Size: 257

Molecular Weight: 28 kDa

Gene ID: 6132

NCBI Accession: [NM_000973](#), [NP_000964](#)

UniProt: [P62917](#)

Pathways: [Regulation of Cell Size](#)

Application Details

Application Notes: Optimal working dilutions should be determined experimentally by the investigator.

Comment: Antigen size: 257 AA

Restrictions: For Research Use only

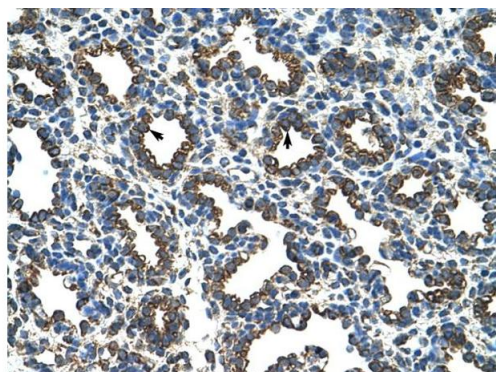
Handling

Format:	Liquid
Concentration:	Lot specific
Buffer:	Liquid. Purified antibody supplied in 1x PBS buffer with 0.09 % (w/v) sodium azide and 2 % sucrose.
Preservative:	Sodium azide
Precaution of Use:	This product contains Sodium azide: a POISONOUS AND HAZARDOUS SUBSTANCE which should be handled by trained staff only.
Handling Advice:	Avoid repeated freeze-thaw cycles.
Storage:	-20 °C
Storage Comment:	For short term use, store at 2-8°C up to 1 week. For long term storage, store at -20°C in small aliquots to prevent freeze-thaw cycles.

Publications

Product cited in:	Holmberg, Ingner, Johansson, Leander, Hjalt: "PITX2 gain-of-function induced defects in mouse forelimb development." in: BMC developmental biology , Vol. 8, pp. 25, (2008) (PubMed).
-------------------	--

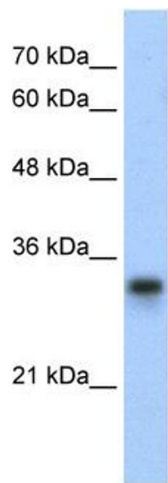
Images



Rabbit Anti-RPL8 Antibody
Catalog Number: ARP40215
Lot Number: QC11430
Paraffin Embedded Tissue: Human Lung
Cells with Positive label: Alveolar cells (Indicated with Arrows)
Antibody Concentration: 4.0-8.0 µg/ml
Magnification: 400X

Immunohistochemistry

Image 1. Rabbit Anti-RPL8 Antibody Paraffin Embedded Tissue: Human Lung Cellular Data: Alveolar cells Antibody Concentration: 4.0-8.0 ug/ml Magnification: 400X



Western Blotting

Image 2. WB Suggested Anti-RPL8 Antibody Titration:
0.3125ug/ml Positive Control: HepG2 cell lysate