

Datasheet for ABIN2778677
anti-RPL13 antibody (C-Term)[Go to Product page](#)

7 Images

1 Publication

Overview

Quantity:	100 µL
Target:	RPL13
Binding Specificity:	C-Term
Reactivity:	Human, Mouse, Rat, Dog, Cow, Guinea Pig, Rabbit, Zebrafish (Danio rerio), Horse
Host:	Rabbit
Clonality:	Polyclonal
Conjugate:	This RPL13 antibody is un-conjugated
Application:	Western Blotting (WB), Immunohistochemistry (IHC)

Product Details

Immunogen:	The immunogen is a synthetic peptide directed towards the C terminal region of human RPL13
Sequence:	KKEKARVITE EEKNFKAFAS LRMARANARL FGIRAKRAKE AAEQDVEKKK
Predicted Reactivity:	Cow: 100%, Dog: 100%, Guinea Pig: 100%, Horse: 100%, Human: 100%, Mouse: 100%, Rabbit: 100%, Rat: 100%, Zebrafish: 100%
Characteristics:	This is a rabbit polyclonal antibody against RPL13. It was validated on Western Blot using a cell lysate as a positive control.
Purification:	Affinity Purified

Target Details

Target:	RPL13
---------	-------

Target Details

Alternative Name: RPL13 ([RPL13 Products](#))

Background: Ribosomes, the organelles that catalyze protein synthesis, consist of a small 40S subunit and a large 60S subunit. Together these subunits are composed of 4 RNA species and approximately 80 structurally distinct proteins. RPL13 is a ribosomal protein that is a component of the 60S subunit. The protein belongs to the L13E family of ribosomal proteins. It is located in the cytoplasm. This gene is expressed at significantly higher levels in benign breast lesions than in breast carcinomas. Ribosomes, the organelles that catalyze protein synthesis, consist of a small 40S subunit and a large 60S subunit. Together these subunits are composed of 4 RNA species and approximately 80 structurally distinct proteins. This gene encodes a ribosomal protein that is a component of the 60S subunit. The protein belongs to the L13E family of ribosomal proteins. It is located in the cytoplasm. This gene is expressed at significantly higher levels in benign breast lesions than in breast carcinomas. Transcript variants derived from alternative splicing and/or alternative polyadenylation exist, these variants encode the same protein. As is typical for genes encoding ribosomal proteins, there are multiple processed pseudogenes of this gene dispersed through the genome.

Alias Symbols: BBC1, D16S444E, FLJ27453, FLJ27454, MGC117342, MGC71373, L13, D16S44E

Protein Interaction Partner: CEP70, HUWE1, NEDD1, TUBGCP4, CEP250, VCP, TUBG1, TP53, STAU1, UBC, MDM2, RPL36, EEF1E1, AIMP1, RPLP0, RPL26, RPL24, RPL23A, RPL21, RPL19, RPL18, RPL15, RPL7A, QARS, MARS, EIF2S1, DARS, PARK2, UPF2, TARDBP, ILK, ICAM1, CD81, IGSF8, PAN2, MYC, ITGA4, FN1,

Protein Size: 211

Molecular Weight: 24 kDa

Gene ID: 6137

NCBI Accession: [NM_000977](#), [NP_000968](#)

UniProt: [P26373](#)

Application Details

Application Notes: Optimal working dilutions should be determined experimentally by the investigator.

Comment: Antigen size: 211 AA

Restrictions: For Research Use only

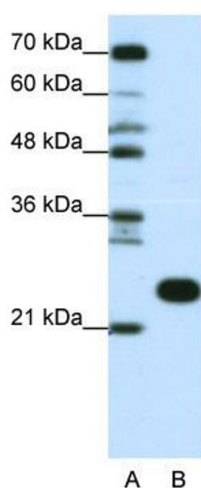
Handling

Format:	Liquid
Concentration:	Lot specific
Buffer:	Liquid. Purified antibody supplied in 1x PBS buffer with 0.09 % (w/v) sodium azide and 2 % sucrose.
Preservative:	Sodium azide
Precaution of Use:	This product contains Sodium azide: a POISONOUS AND HAZARDOUS SUBSTANCE which should be handled by trained staff only.
Handling Advice:	Avoid repeated freeze-thaw cycles.
Storage:	-20 °C
Storage Comment:	For short term use, store at 2-8°C up to 1 week. For long term storage, store at -20°C in small aliquots to prevent freeze-thaw cycles.

Publications

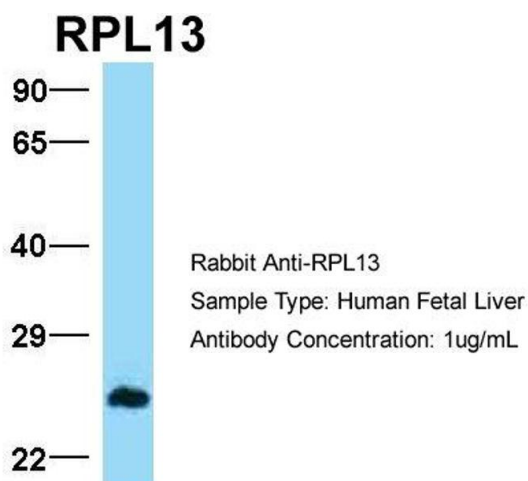
Product cited in:	Yomo, Hongo, Kuroyanagi, Kobayashi: "Parkinsonism and midbrain dysfunction after shunt placement for obstructive hydrocephalus." in: Journal of clinical neuroscience : official journal of the Neurosurgical Society of Australasia , Vol. 13, Issue 3, pp. 373-8, (2006) (PubMed).
-------------------	---------------------------------------------------------------------------------------------------------------------------------------------------------------------------------------------------------------------------------------------------------------------------------------------------------------

Images



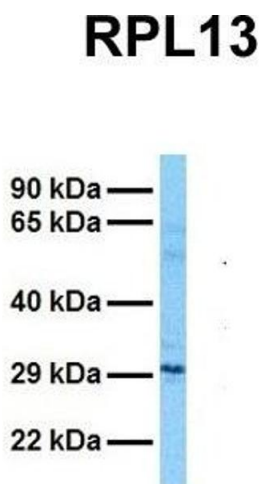
Western Blotting

Image 1. WB Suggested Anti-RPL13 Antibody Titration: 0.0625ug/ml ELISA Titer: 1:62500 Positive Control: Jurkat cell lysate



Western Blotting

Image 2. Host: Rabbit Target Name: RPL13 Sample Type:
Human Fetal Liver Antibody Dilution: 1.0ug/ml



Western Blotting

Image 3. Host: Rabbit Target Name: RPL13 Sample Tissue:
Human Fetal Lung Antibody Dilution: 1.0ug/ml

Please check the [product details page](#) for more images. Overall 7 images are available for ABIN2778677.