

Datasheet for ABIN2778689  
**anti-RBMS3 antibody (Middle Region)**[Go to Product page](#)

## 2 Images

## Overview

Quantity:	100 µL
Target:	RBMS3
Binding Specificity:	Middle Region
Reactivity:	Human, Mouse, Dog, Guinea Pig, Rabbit, Rat, Cow, Horse
Host:	Rabbit
Clonality:	Polyclonal
Conjugate:	This RBMS3 antibody is un-conjugated
Application:	Western Blotting (WB), Immunohistochemistry (IHC)

## Product Details

Immunogen:	The immunogen is a synthetic peptide directed towards the middle region of human RBMS3
Sequence:	PTAVSIEGVV ADTSPQTVAP SSQDTSGQQQ QIAVDTSNEH APAYSYYQSK
Predicted Reactivity:	Cow: 92%, Dog: 100%, Guinea Pig: 100%, Horse: 93%, Human: 100%, Mouse: 92%, Rabbit: 100%, Rat: 93%
Characteristics:	This is a rabbit polyclonal antibody against RBMS3. It was validated on Western Blot using a cell lysate as a positive control.
Purification:	Affinity Purified

## Target Details

Target:	RBMS3
---------	-------

## Target Details

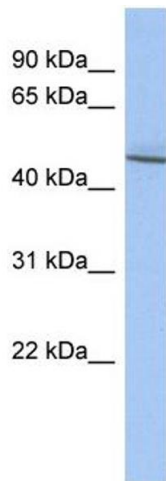
Alternative Name:	RBMS3 ( <a href="#">RBMS3 Products</a> )
Background:	<p>RBMS3 is a member of a small family of proteins which bind single stranded DNA/RNA. These proteins are characterized by the presence of two sets of ribonucleoprotein consensus sequence (RNP-CS) that contain conserved motifs, RNP1 and RNP2, originally desc</p> <p>Alias Symbols: -</p> <p>Protein Size: 419</p>
Molecular Weight:	46 kDa
Gene ID:	27303
NCBI Accession:	<a href="#">NM_001003792</a> , <a href="#">NP_001003792</a>

## Application Details

Application Notes:	Optimal working dilutions should be determined experimentally by the investigator.
Comment:	Antigen size: 419 AA
Restrictions:	For Research Use only

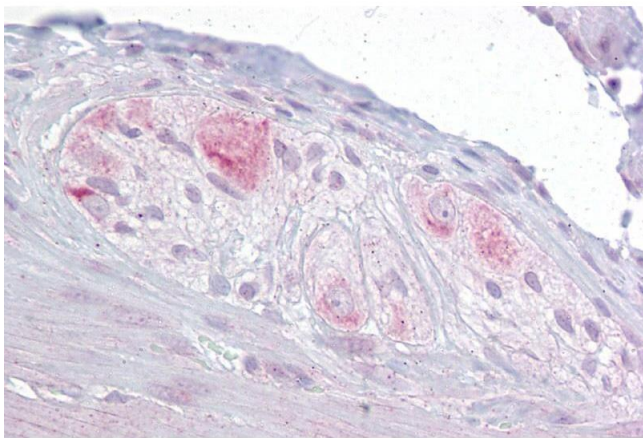
## Handling

Format:	Liquid
Concentration:	Lot specific
Buffer:	Liquid. Purified antibody supplied in 1x PBS buffer with 0.09 % (w/v) sodium azide and 2 % sucrose.
Preservative:	Sodium azide
Precaution of Use:	This product contains Sodium azide: a POISONOUS AND HAZARDOUS SUBSTANCE which should be handled by trained staff only.
Handling Advice:	Avoid repeated freeze-thaw cycles.
Storage:	-20 °C
Storage Comment:	For short term use, store at 2-8°C up to 1 week. For long term storage, store at -20°C in small aliquots to prevent freeze-thaw cycles.



#### Western Blotting

**Image 1.** WB Suggested Anti-RBMS3 Antibody Titration: 0.2-1 ug/ml ELISA Titer: 1:62500 Positive Control: OVCAR-3 cell lysate



#### Immunohistochemistry

**Image 2.** Immunohistochemistry with Small intestine, myenteric plexus tissue at an antibody concentration of 10µg/ml using anti-RBMS3 antibody (ARP40233\_P050)