

Datasheet for ABIN2778691  
**anti-RBMS3 antibody (C-Term)**[Go to Product page](#)

## 1 Image

## Overview

Quantity:	100 µL
Target:	RBMS3
Binding Specificity:	C-Term
Reactivity:	Human, Mouse, Dog, Guinea Pig, Rabbit, Rat, Cow, Horse
Host:	Rabbit
Clonality:	Polyclonal
Conjugate:	This RBMS3 antibody is un-conjugated
Application:	Western Blotting (WB)

## Product Details

Immunogen:	The immunogen is a synthetic peptide directed towards the C terminal region of human RBMS3
Sequence:	TAVSIEGVVA DTSPQTVAPS SQDTSGQQQQ IAVDTSNEHA PAYSYYQSKP
Predicted Reactivity:	Cow: 79%, Dog: 100%, Guinea Pig: 100%, Horse: 93%, Human: 100%, Mouse: 79%, Rabbit: 100%, Rat: 93%
Characteristics:	This is a rabbit polyclonal antibody against RBMS3. It was validated on Western Blot using a cell lysate as a positive control.
Purification:	Protein A purified

## Target Details

Target:	RBMS3
---------	-------

## Target Details

Alternative Name: RBMS3 ([RBMS3 Products](#))

Background: RBMS3 is a member of a small family of proteins which bind single stranded DNA/RNA. These proteins are characterized by the presence of two sets of ribonucleoprotein consensus sequence (RNP-CS) that contain conserved motifs, RNP1 and RNP2, originally described in RNA binding proteins, and required for DNA binding. These proteins have been implicated in such diverse functions as DNA replication, gene transcription, cell cycle progression and apoptosis. The protein encoded by this gene is a member of a small family of proteins which bind single stranded DNA/RNA. These proteins are characterized by the presence of two sets of ribonucleoprotein consensus sequence (RNP-CS) that contain conserved motifs, RNP1 and RNP2, originally described in RNA binding proteins, and required for DNA binding. These proteins have been implicated in such diverse functions as DNA replication, gene transcription, cell cycle progression and apoptosis. The encoded protein was isolated by virtue of its binding to an upstream element of the alpha2(I) collagen promoter. The observation that this protein localizes mostly in the cytoplasm suggests that it may be involved in a cytoplasmic function such as controlling RNA metabolism, rather than transcription. Multiple alternatively spliced transcript variants encoding different isoforms have been found for this gene.

Protein Size: 419

Molecular Weight: 46 kDa

Gene ID: 27303

NCBI Accession: [NM\\_001003792](#), [NP\\_001003792](#)

## Application Details

Application Notes: Optimal working dilutions should be determined experimentally by the investigator.

Comment: Antigen size: 419 AA

Restrictions: For Research Use only

## Handling

Format: Liquid

Concentration: Lot specific

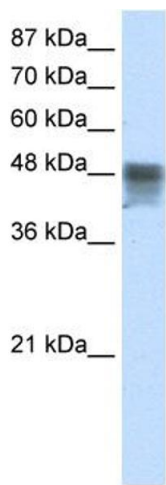
Buffer: Liquid. Purified antibody supplied in 1x PBS buffer with 0.09 % (w/v) sodium azide and 2 % sucrose.

Preservative: Sodium azide

## Handling

Precaution of Use:	This product contains Sodium azide: a POISONOUS AND HAZARDOUS SUBSTANCE which should be handled by trained staff only.
Handling Advice:	Avoid repeated freeze-thaw cycles.
Storage:	-20 °C
Storage Comment:	For short term use, store at 2-8°C up to 1 week. For long term storage, store at -20°C in small aliquots to prevent freeze-thaw cycles.

## Images



**Western Blotting**

**Image 1.** WB Suggested Anti-RBMS3 Antibody Titration:  
2.5ug/ml Positive Control: HepG2 cell lysate