

Datasheet for ABIN2778698
anti-LUC7-Like 3 antibody (Middle Region)



[Go to Product page](#)

1 Image

Overview

Quantity:	100 µL
Target:	LUC7-Like 3 (LUC7L3)
Binding Specificity:	Middle Region
Reactivity:	Mouse, Human, Rat, Cow, Dog, Rabbit, Horse, Guinea Pig, Saccharomyces cerevisiae, Zebrafish (Danio rerio)
Host:	Rabbit
Clonality:	Polyclonal
Conjugate:	This LUC7-Like 3 antibody is un-conjugated
Application:	Western Blotting (WB)

Product Details

Immunogen:	The immunogen is a synthetic peptide directed towards the middle region of human LUC7L3
Sequence:	LKKEKQEREE REKERERERE ERERKRRREE EEREKERARD RERRKRSRSR
Predicted Reactivity:	Cow: 100%, Dog: 100%, Guinea Pig: 100%, Horse: 100%, Human: 100%, Mouse: 100%, Rabbit: 100%, Rat: 100%, Yeast: 79%, Zebrafish: 93%
Characteristics:	This is a rabbit polyclonal antibody against LUC7L3. It was validated on Western Blot.
Purification:	Affinity Purified

Target Details

Target:	LUC7-Like 3 (LUC7L3)
---------	----------------------

Target Details

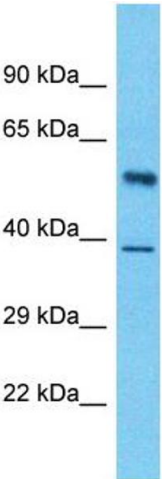
Alternative Name:	LUC7L3 (LUC7L3 Products)
Background:	<p>This gene encodes a protein with an N-terminal half that contains cysteine/histidine motifs and leucine zipper-like repeats, and the C-terminal half is rich in arginine and glutamate residues (RE domain) and arginine and serine residues (RS domain). This protein localizes with a speckled pattern in the nucleus, and could be involved in the formation of spliceosome via the RE and RS domains. Two alternatively spliced transcript variants encoding the same protein have been found for this gene.</p> <p>Alias Symbols: CRA, CROP, LUC7A, hLuc7A, CREAP-1, OA48-18</p> <p>Protein Size: 489</p>
Molecular Weight:	53 kDa
Gene ID:	51747
NCBI Accession:	XM_005257448 , XP_005257505
UniProt:	J3KPP4
Pathways:	Ribonucleoprotein Complex Subunit Organization

Application Details

Restrictions:	For Research Use only
---------------	-----------------------

Handling

Format:	Liquid
Concentration:	1 mg/mL
Buffer:	Liquid. Purified antibody supplied in 1x PBS buffer with 0.09 % (w/v) sodium azide and 2 % sucrose.
Preservative:	Sodium azide
Precaution of Use:	This product contains Sodium azide: a POISONOUS AND HAZARDOUS SUBSTANCE which should be handled by trained staff only.
Handling Advice:	Avoid repeat freeze-thaw cycles.
Storage:	-20 °C
Storage Comment:	For short term use, store at 2-8°C up to 1 week. For long term storage, store at -20°C in small aliquots to prevent freeze-thaw cycles.



Western Blotting

Image 1. Host: Rabbit Target Name: LUC7L3 Sample Type: Pancreas Tumor lysates Antibody Dilution: 1.0ug/ml