

Datasheet for ABIN2778699
anti-SF3B1 antibody (Middle Region)[Go to Product page](#)

4 Images

Overview

Quantity:	100 µL
Target:	SF3B1
Binding Specificity:	Middle Region
Reactivity:	Human, Mouse, Rat, Dog, Cow, Guinea Pig, Horse, Goat, Rabbit, Zebrafish (Danio rerio)
Host:	Rabbit
Clonality:	Polyclonal
Conjugate:	This SF3B1 antibody is un-conjugated
Application:	Western Blotting (WB), Immunohistochemistry (IHC)

Product Details

Immunogen:	The immunogen is a synthetic peptide directed towards the middle region of human SF3B1
Sequence:	LLNDIPQSTE QYDPFAEHRP PKIADREDEY KKHRRTMIIS PERLDPFADG
Predicted Reactivity:	Cow: 100%, Dog: 100%, Goat: 86%, Guinea Pig: 100%, Horse: 100%, Human: 100%, Mouse: 100%, Rabbit: 100%, Rat: 100%, Zebrafish: 86%
Characteristics:	This is a rabbit polyclonal antibody against SF3B1. It was validated on Western Blot and immunohistochemistry.
Purification:	Protein A purified

Target Details

Target:	SF3B1
---------	-------

Target Details

Alternative Name:	SF3B1 (SF3B1 Products)
Background:	<p>SF3B1 is the subunit 1 of the splicing factor 3b protein complex. Splicing factor 3b, together with splicing factor 3a and a 12S RNA unit, forms the U2 small nuclear ribonucleoproteins complex (U2 snRNP). The splicing factor 3b/3a complex binds pre-mRNA upstream of the intron's branch site in a sequence independent manner and may anchor the U2 snRNP to the pre-mRNA. Splicing factor 3b is also a component of the minor U12-type spliceosome.</p> <p>Alias Symbols: MDS, PRP10, Hsh155, PRPF10, SAP155, SF3b155</p> <p>Protein Interaction Partner: SART3, SUMO2, SUMO3, MDM2, STAU1, UBC, LGR4, WWOX, RPA3, RPA2, RPA1, ERG, EED, RNF2, EZH2, SUZ12, APBB1, PRPF40A, WBP4, TCERG1, FBXO6, RBM17, SNIP1, SF3B6, WHSC1, RPS2, RPL23A, RPL18A, RPL10, RPL3, PLRG1, SMAD9, SMAD5, SMAD1, IL7R, FN1, ESR1, CSNK2A1, EIF</p> <p>Protein Size: 789</p>
Molecular Weight:	87 kDa
Gene ID:	23451
NCBI Accession:	NM_001005526
UniProt:	O75533
Pathways:	Chromatin Binding

Application Details

Application Notes:	Optimal working dilutions should be determined experimentally by the investigator.
Comment:	Antigen size: 789 AA
Restrictions:	For Research Use only

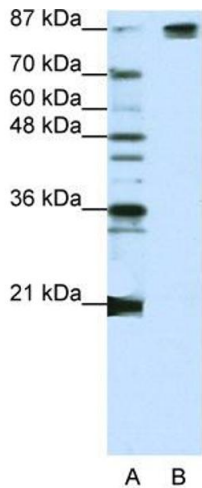
Handling

Format:	Liquid
Concentration:	Lot specific
Buffer:	Liquid. Purified antibody supplied in 1x PBS buffer with 0.09 % (w/v) sodium azide and 2 % sucrose.
Preservative:	Sodium azide
Precaution of Use:	This product contains Sodium azide: a POISONOUS AND HAZARDOUS SUBSTANCE which should be handled by trained staff only.

Handling

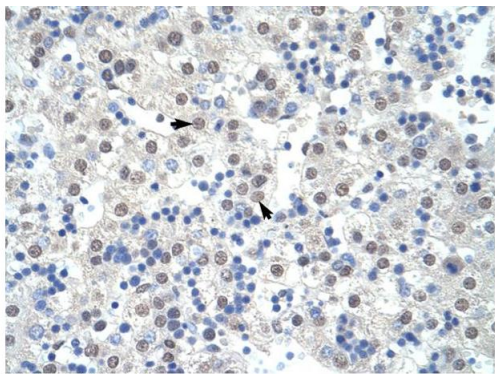
Handling Advice:	Avoid repeated freeze-thaw cycles.
Storage:	-20 °C
Storage Comment:	For short term use, store at 2-8°C up to 1 week. For long term storage, store at -20°C in small aliquots to prevent freeze-thaw cycles.

Images



Western Blotting

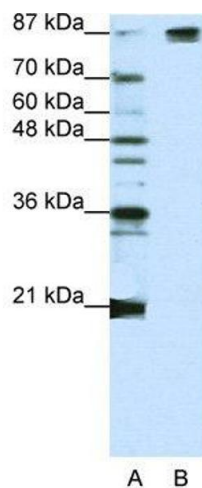
Image 1. WB Suggested Anti-SF3B1 Antibody Titration: 1.25ug/ml ELISA Titer: 1:62500 Positive Control: Jurkat cell lysate SF3B1 is strongly supported by BioGPS gene expression data to be expressed in Human Jurkat cells



Rabbit Anti-SF3B1 Antibody
Catalog Number: ARP40248
Lot Number: QC9424
Paraffin Embedded Tissue: Human Liver
Cells with Positive label: Hepatocytes (Indicated with Arrows)
Antibody Concentration: 4.0-8.0 µg/ml
Magnification: 400X

Immunohistochemistry

Image 2. Rabbit Anti-SF3B1 Antibody Paraffin Embedded Tissue: Human Liver Cellular Data: Hepatocytes Antibody Concentration: 4.0-8.0 ug/ml Magnification: 400X



Western Blotting

Image 3. WB Suggested Anti-SF3B1

Antibody Titration: 1.25 µg/mL ELISA Titer: 1:62500

Positive Control: Jurkat cell lysate

SF3B1 is strongly supported by BioGPS gene expression data to be expressed in Human Jurkat cells

Please check the [product details page](#) for more images. Overall 4 images are available for ABIN2778699.