



[Go to Product page](#)

Datasheet for ABIN2778700  
**anti-SF3B1 antibody (N-Term)**

5 Images

Overview

Quantity:	100 µL
Target:	SF3B1
Binding Specificity:	N-Term
Reactivity:	Human, Mouse, Rat, Dog, Cow, Guinea Pig, Horse, Goat, Rabbit, Zebrafish (Danio rerio)
Host:	Rabbit
Clonality:	Polyclonal
Conjugate:	This SF3B1 antibody is un-conjugated
Application:	Western Blotting (WB), Immunohistochemistry (IHC)

Product Details

Immunogen:	The immunogen is a synthetic peptide directed towards the N terminal region of human SF3B1
Sequence:	MAKIAKTHED IEAQIREIQG KKAALDEAQG VGLDSTGYDD QEIYGGSDSR
Predicted Reactivity:	Cow: 100%, Dog: 100%, Goat: 100%, Guinea Pig: 100%, Horse: 100%, Human: 100%, Mouse: 100%, Rabbit: 100%, Rat: 100%, Zebrafish: 86%
Characteristics:	This is a rabbit polyclonal antibody against SF3B1. It was validated on Western Blot and immunohistochemistry.
Purification:	Protein A purified

Target Details

Target:	SF3B1
---------	-------

## Target Details

---

Alternative Name: SF3B1 ([SF3B1 Products](#))

---

Background: SF3B1 is subunit 1 of the splicing factor 3b protein complex. Splicing factor 3b, together with splicing factor 3a and a 12S RNA unit, forms the U2 small nuclear ribonucleoproteins complex (U2 snRNP). The splicing factor 3b/3a complex binds pre-mRNA upstream of the intron's branch site in a sequence independent manner and may anchor the U2 snRNP to the pre-mRNA. Splicing factor 3b is also a component of the minor U12-type spliceosome. The carboxy-terminal two-thirds of subunit 1 have 22 non-identical, tandem HEAT repeats that form rod-like, helical structures. This gene encodes subunit 1 of the splicing factor 3b protein complex. Splicing factor 3b, together with splicing factor 3a and a 12S RNA unit, forms the U2 small nuclear ribonucleoproteins complex (U2 snRNP). The splicing factor 3b/3a complex binds pre-mRNA upstream of the intron's branch site in a sequence independent manner and may anchor the U2 snRNP to the pre-mRNA. Splicing factor 3b is also a component of the minor U12-type spliceosome. The carboxy-terminal two-thirds of subunit 1 have 22 non-identical, tandem HEAT repeats that form rod-like, helical structures. Alternative splicing results in multiple transcript variants encoding different isoforms.

Alias Symbols: PRP10, SAP155, SF3b155, MDS, Hsh155, PRPF10

Protein Interaction Partner: SART3, SUMO2, SUMO3, MDM2, STAU1, UBC, LGR4, WWOX, RPA3, RPA2, RPA1, ERG, EED, RNF2, EZH2, SUZ12, APBB1, PRPF40A, WBP4, TCERG1, FBXO6, RBM17, SNIP1, SF3B6, WHSC1, RPS2, RPL23A, RPL18A, RPL10, RPL3, PLRG1, SMAD9, SMAD5, SMAD1, IL7R, FN1, ESR1, CSNK2A1, EIF

Protein Size: 1304

---

Molecular Weight: 143 kDa

---

Gene ID: 23451

---

NCBI Accession: [NM\\_012433](#), [NP\\_036565](#)

---

UniProt: [O75533](#)

---

Pathways: [Chromatin Binding](#)

---

## Application Details

---

Application Notes: Optimal working dilutions should be determined experimentally by the investigator.

---

Comment: Antigen size: 1304 AA

---

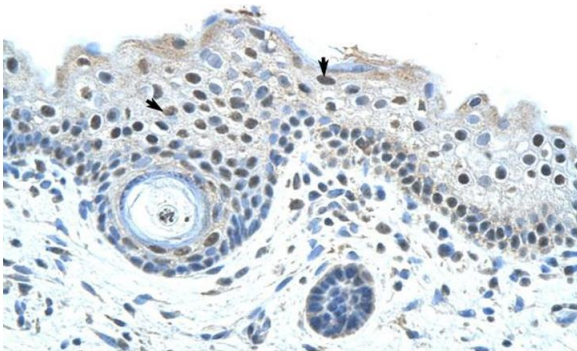
Restrictions: For Research Use only

---

## Handling

Format:	Liquid
Concentration:	Lot specific
Buffer:	Liquid. Purified antibody supplied in 1x PBS buffer with 0.09 % (w/v) sodium azide and 2 % sucrose.
Preservative:	Sodium azide
Precaution of Use:	This product contains Sodium azide: a POISONOUS AND HAZARDOUS SUBSTANCE which should be handled by trained staff only.
Handling Advice:	Avoid repeated freeze-thaw cycles.
Storage:	-20 °C
Storage Comment:	For short term use, store at 2-8°C up to 1 week. For long term storage, store at -20°C in small aliquots to prevent freeze-thaw cycles.

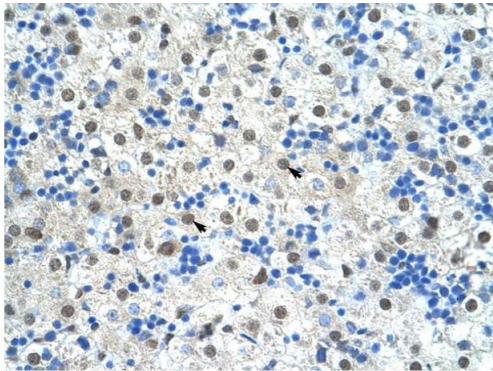
## Images



Rabbit Anti-SF3B1 Antibody  
Catalog Number: ARP40249  
Lot Number: QC10286  
Paraffin Embedded Tissue: Human Skin  
Cells with Positive label: Epidermal cells (Indicated with Arrows)  
Antibody Concentration: 4.0-8.0 µg/ml  
Magnification: 400X

### Immunohistochemistry

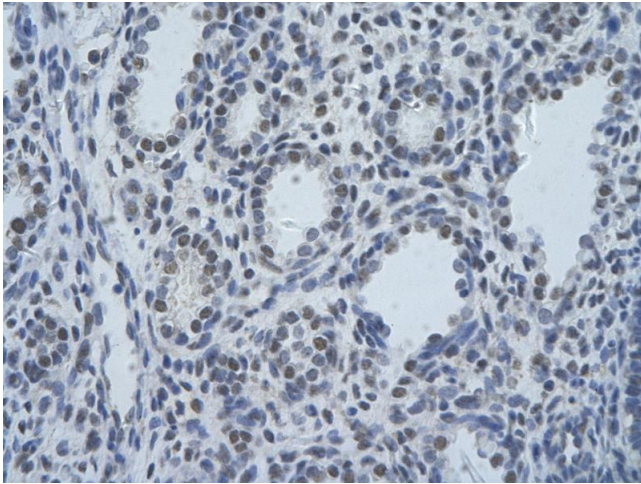
**Image 1.** Rabbit Anti-SF3B1 Antibody Paraffin Embedded  
Tissue: Human Skin Cellular Data: Epidermal cells Antibody  
Concentration: 16 ug/ml Magnification: 400X



Rabbit Anti-SF3B1 Antibody  
Catalog Number: ARP40249  
Lot Number: QC10286  
Paraffin Embedded Tissue: Human Liver  
Cells with Positive label: Hepatocytes (Indicated with Arrows)  
Antibody Concentration: 4.0-8.0 µg/ml  
Magnification: 400X

### Immunohistochemistry

**Image 2.** Rabbit Anti-SF3B1 Antibody Paraffin Embedded  
Tissue: Human Liver Cellular Data: Hepatocytes Antibody  
Concentration: 4.0-8.0 ug/ml Magnification: 400X



### Immunohistochemistry

**Image 3.** Rabbit Anti-SF3B1 Antibody Paraffin Embedded Tissue: Human alveolar cell Cellular Data: Epithelial cells of renal tubule Antibody Concentration: 4.0-8.0 ug/ml Magnification: 400X

Please check the [product details page](#) for more images. Overall 5 images are available for ABIN2778700.