

Datasheet for ABIN2778705
anti-PHOSPHO2 antibody (N-Term)[Go to Product page](#)

1 Image

Overview

| | |
|----------------------|---|
| Quantity: | 100 µL |
| Target: | PHOSPHO2 |
| Binding Specificity: | N-Term |
| Reactivity: | Human, Mouse, Dog, Rat, Cow, Pig |
| Host: | Rabbit |
| Clonality: | Polyclonal |
| Conjugate: | This PHOSPHO2 antibody is un-conjugated |
| Application: | Western Blotting (WB) |

Product Details

| | |
|-----------------------|---|
| Immunogen: | The immunogen is a synthetic peptide directed towards the N terminal region of human PHOSPHO2 |
| Sequence: | MKILLVFDFD NTIIDDNSDT WIVQCAPNKK LPIELRDSYR KGFWTEFMGR |
| Predicted Reactivity: | Cow: 77%, Dog: 77%, Human: 100%, Mouse: 79%, Pig: 92%, Rat: 79% |
| Characteristics: | This is a rabbit polyclonal antibody against PHOSPHO2. It was validated on Western Blot. |
| Purification: | Affinity Purified |

Target Details

| | |
|-------------------|--|
| Target: | PHOSPHO2 |
| Alternative Name: | PHOSPHO2 (PHOSPHO2 Products) |

Target Details

Background: PHOSPHO2 is a phosphatase that has high activity toward pyridoxal 5'-phosphate (PLP). PHOSPHO2 also active at much lower level toward pyrophosphate, phosphoethanolamine (PEA), phosphocholine (PCho), phospho-l-tyrosine, fructose-6-phosphate, p-nitrophenyl phosphate, and h-glycerophosphate.

Alias Symbols: MGC111048, MGC22679

Protein Interaction Partner: NAB2,

Protein Size: 241

Molecular Weight: 28 kDa

Gene ID: 493911

NCBI Accession: [NM_001008489](#), [NP_001008489](#)

UniProt: [Q8TCD6](#)

Application Details

Application Notes: Optimal working dilutions should be determined experimentally by the investigator.

Comment: Antigen size: 241 AA

Restrictions: For Research Use only

Handling

Format: Liquid

Concentration: Lot specific

Buffer: Liquid. Purified antibody supplied in 1x PBS buffer with 0.09 % (w/v) sodium azide and 2 % sucrose.

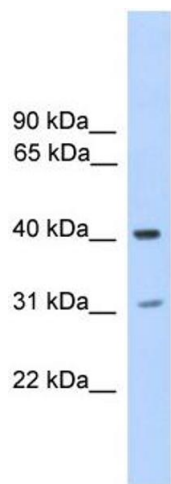
Preservative: Sodium azide

Precaution of Use: This product contains Sodium azide: a POISONOUS AND HAZARDOUS SUBSTANCE which should be handled by trained staff only.

Handling Advice: Avoid repeated freeze-thaw cycles.

Storage: -20 °C

Storage Comment: For short term use, store at 2-8°C up to 1 week. For long term storage, store at -20°C in small aliquots to prevent freeze-thaw cycles.



Western Blotting

Image 1. WB Suggested Anti-PHOSPHO2 Antibody Titration:
0.2-1 ug/ml ELISA Titer: 1:312500 Positive Control: Human Muscle