

Datasheet for ABIN2778706
anti-CCBL2 antibody (C-Term)[Go to Product page](#)

1 Image

Overview

Quantity:	100 µL
Target:	CCBL2
Binding Specificity:	C-Term
Reactivity:	Human, Rat, Mouse, Cow, Dog, Guinea Pig, Horse
Host:	Rabbit
Clonality:	Polyclonal
Conjugate:	This CCBL2 antibody is un-conjugated
Application:	Western Blotting (WB)

Product Details

Immunogen:	The immunogen is a synthetic peptide directed towards the C terminal region of human CCBL2
Sequence:	LSAIPVSAFC NSETKSQFEK FVRFCFIKKD STLDAAEEII KAWSVQKS
Predicted Reactivity:	Cow: 100%, Dog: 100%, Guinea Pig: 100%, Horse: 93%, Human: 100%, Mouse: 100%, Rat: 100%
Characteristics:	This is a rabbit polyclonal antibody against CCBL2. It was validated on Western Blot using a cell lysate as a positive control.
Purification:	Affinity Purified

Target Details

Target:	CCBL2
Alternative Name:	CCBL2 (CCBL2 Products)

Target Details

Background:	<p>CCBL2 is an aminotransferase that transaminates kynurenine to form kynurenic acid. Kynurenic acid is a metabolite of tryptophan. Multiple alternatively spliced transcript variants that encode different proteins have been described for this gene. One of the transcripts encodes a predicted protein that has sequence identity to the protein encoded by the RNA binding motif protein, X-linked gene (RBMX). This gene encodes an aminotransferase that transaminates kynurenine to form kynurenic acid. Kynurenic acid is a metabolite of tryptophan. Multiple alternatively spliced transcript variants that encode different proteins have been described for this gene. One of the transcripts encodes a predicted protein that has sequence identity to the protein encoded by the RNA binding motif protein, X-linked gene (RBMX).</p> <p>Alias Symbols: DKFZp547N1117, DKFZp667D0223, KAT3, MGC9398, RBM1, RBMXL1, RP4-531M19.2, KATIII, RP11-82K18.3</p> <p>Protein Interaction Partner: UBC, LIN28A, COPS5, CUL1, CUL4B, RABIF,</p> <p>Protein Size: 420</p>
-------------	--

Molecular Weight:	48 kDa
-------------------	--------

Gene ID:	56267
----------	-------

NCBI Accession:	NM_001008662 , NP_001008662
-----------------	---

UniProt:	A8MY75
----------	------------------------

Application Details

Application Notes:	Optimal working dilutions should be determined experimentally by the investigator.
--------------------	--

Comment:	Antigen size: 420 AA
----------	----------------------

Restrictions:	For Research Use only
---------------	-----------------------

Handling

Format:	Liquid
---------	--------

Concentration:	Lot specific
----------------	--------------

Buffer:	Liquid. Purified antibody supplied in 1x PBS buffer with 0.09 % (w/v) sodium azide and 2 % sucrose.
---------	---

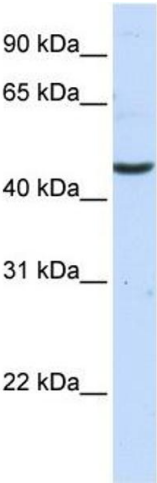
Preservative:	Sodium azide
---------------	--------------

Precaution of Use:	This product contains Sodium azide: a POISONOUS AND HAZARDOUS SUBSTANCE which should be handled by trained staff only.
--------------------	--

Handling

Handling Advice:	Avoid repeated freeze-thaw cycles.
Storage:	-20 °C
Storage Comment:	For short term use, store at 2-8°C up to 1 week. For long term storage, store at -20°C in small aliquots to prevent freeze-thaw cycles.

Images



Western Blotting

Image 1. WB Suggested Anti-CCBL2 Antibody Titration: 0.2-1 ug/ml ELISA Titer: 1:62500 Positive Control: Human brain