



Datasheet for ABIN2778719 anti-OLA1 antibody (N-Term)



[Go to Product page](#)

2 Images

Overview

Quantity:	100 µL
Target:	OLA1
Binding Specificity:	N-Term
Reactivity:	Human, Mouse, Rat, Dog, Cow, Rabbit, Guinea Pig, Horse, Zebrafish (Danio rerio)
Host:	Rabbit
Clonality:	Polyclonal
Conjugate:	This OLA1 antibody is un-conjugated
Application:	Western Blotting (WB), Immunohistochemistry (IHC)

Product Details

Immunogen:	The immunogen is a synthetic peptide directed towards the N terminal region of human GTPBP9
Sequence:	MIGPIIDKLE KVAVRGGDKK LKPEYDIMCK VKSWVIDQKK PVRFYHDWND
Predicted Reactivity:	Cow: 100%, Dog: 100%, Guinea Pig: 100%, Horse: 100%, Human: 100%, Mouse: 100%, Rabbit: 100%, Rat: 100%, Zebrafish: 93%
Characteristics:	This is a rabbit polyclonal antibody against GTPBP9. It was validated on Western Blot and immunohistochemistry.
Purification:	Protein A purified

Target Details

Target:	OLA1
---------	------

Target Details

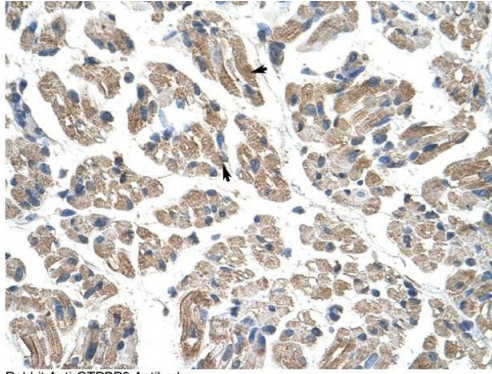
Alternative Name:	GTPBP9 (OLA1 Products)
Background:	<p>GTPBP9 belongs to the GTP1/OBG family and the function remains unknown.</p> <p>Alias Symbols: DOC45, GBP45, GTBP9, GTPBP9, PTD004</p> <p>Protein Interaction Partner: HUWE1, BRCA1, BARD1, UBC, TUBG1, ZNF346, MAPRE1, YWHAZ, TXNRD1, SNRPF, SNRPE, RAP1GDS1, HDGF, GSS, ASNS, ACAT2, BAG3, SOX2, HMGA1, gag, STUB1, HSPA4, FN1, ARPC1A, NDUFA7, NDUFA2, GAPDH, ALDOC, GRK5, RAD21, BCL6, ASCC2, PRMT5, PUF60,</p> <p>Protein Size: 396</p>
Molecular Weight:	44 kDa
Gene ID:	29789
NCBI Accession:	NM_013341 , NP_037473
UniProt:	Q9NTK5

Application Details

Application Notes:	Optimal working dilutions should be determined experimentally by the investigator.
Comment:	Antigen size: 396 AA
Restrictions:	For Research Use only

Handling

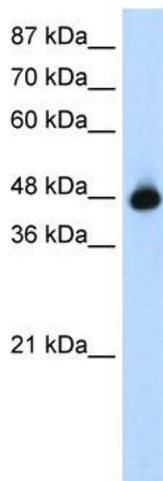
Format:	Liquid
Concentration:	Lot specific
Buffer:	Liquid. Purified antibody supplied in 1x PBS buffer with 0.09 % (w/v) sodium azide and 2 % sucrose.
Preservative:	Sodium azide
Precaution of Use:	This product contains Sodium azide: a POISONOUS AND HAZARDOUS SUBSTANCE which should be handled by trained staff only.
Handling Advice:	Avoid repeated freeze-thaw cycles.
Storage:	-20 °C
Storage Comment:	For short term use, store at 2-8°C up to 1 week. For long term storage, store at -20°C in small aliquots to prevent freeze-thaw cycles.



Rabbit Anti-GTPBP9 Antibody
Catalog Number: ARP40281
Lot Number: QC11084
Paraffin Embedded Tissue: Human Muscle
Cells with Positive label: Skeletal muscle cells (Indicated with Arrows)
Antibody Concentration: 4.0-8.0 µg/ml
Magnification: 400X

Immunohistochemistry

Image 1. Rabbit Anti-GTPBP9 Antibody Paraffin Embedded Tissue: Human Muscle Cellular Data: Skeletal muscle cells
Antibody Concentration: 4.0-8.0 ug/ml Magnification: 400X



Western Blotting

Image 2. WB Suggested Anti-GTPBP9 Antibody Titration: 1.25ug/ml Positive Control: HepG2 cell lysate OLA1 is supported by BioGPS gene expression data to be expressed in HepG2