

Datasheet for ABIN2778728  
**anti-CARS antibody (C-Term)**[Go to Product page](#)

2 Images

1 Publication

## Overview

Quantity:	100 µL
Target:	CARS
Binding Specificity:	C-Term
Reactivity:	Human, Mouse, Rat, Rabbit, Dog, Horse, Cow, Zebrafish (Danio rerio), Pig, Saccharomyces cerevisiae
Host:	Rabbit
Clonality:	Polyclonal
Conjugate:	This CARS antibody is un-conjugated
Application:	Western Blotting (WB), Immunohistochemistry (IHC)

## Product Details

Immunogen:	The immunogen is a synthetic peptide directed towards the C terminal region of human CARS
Sequence:	KRKKKEEAAR RKQEQAACL AKMKIPPSEM FLSETDKYSK FDENGLPTH
Predicted Reactivity:	Cow: 79%, Dog: 93%, Horse: 93%, Human: 100%, Mouse: 92%, Pig: 85%, Rabbit: 100%, Rat: 100%, Yeast: 91%, Zebrafish: 93%
Characteristics:	This is a rabbit polyclonal antibody against CARS. It was validated on Western Blot and immunohistochemistry.
Purification:	Affinity Purified

## Target Details

Target:	CARS
---------	------

## Target Details

Alternative Name: CARS ([CARS Products](#))

Background: CARS is a class 1 aminoacyl-tRNA synthetase, cysteinyl-tRNA synthetase. Each of the twenty aminoacyl-tRNA synthetases catalyzes the aminoacylation of a specific tRNA or tRNA isoaccepting family with the cognate amino acid. This gene is one of several located near the imprinted gene domain of 11p15.5, an important tumor-suppressor gene region. Alterations in this region have been associated with the Beckwith-Wiedemann syndrome, Wilms tumor, rhabdomyosarcoma, adrenocortical carcinoma, and lung, ovarian, and breast cancer. Western blots using two different antibodies against two unique regions of this protein target confirm the same apparent molecular weight in our tests. This gene encodes a class 1 aminoacyl-tRNA synthetase, cysteinyl-tRNA synthetase. Each of the twenty aminoacyl-tRNA synthetases catalyzes the aminoacylation of a specific tRNA or tRNA isoaccepting family with the cognate amino acid. This gene is one of several located near the imprinted gene domain of 11p15.5, an important tumor-suppressor gene region. Alterations in this region have been associated with the Beckwith-Wiedemann syndrome, Wilms tumor, rhabdomyosarcoma, adrenocortical carcinoma, and lung, ovarian, and breast cancer. Alternative splicing of this gene results in multiple transcript variants encoding distinct isoforms.

Alias Symbols: CARS1, CYSRS, MGC:11246

Protein Interaction Partner: UBC, DNM1L, CAND1, LUC7L2, THUMP3, JMJD6, XPO7, FAF1, SEC23A, SEC24D, HIRIP3, HIST1H4A, TTC1, TROVE2, SHMT1, PPM1G, PPAT, PAWR, KARS, IDE, HSPA4, GFPT1, GART, GARS, APEH, APP, SUMO2, PACSIN1, PACSIN3, PACSIN2, PSTPIP1, EEF1G,

Protein Size: 738

Molecular Weight: 81 kDa

Gene ID: 833

NCBI Accession: [NM\\_001014438](#), [NP\\_001014438](#)

## Application Details

Application Notes: Optimal working dilutions should be determined experimentally by the investigator.

Comment: Antigen size: 738 AA

Restrictions: For Research Use only

## Handling

Format: Liquid

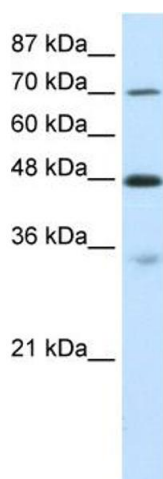
## Handling

Concentration:	Lot specific
Buffer:	Liquid. Purified antibody supplied in 1x PBS buffer with 0.09 % (w/v) sodium azide and 2 % sucrose.
Preservative:	Sodium azide
Precaution of Use:	This product contains Sodium azide: a POISONOUS AND HAZARDOUS SUBSTANCE which should be handled by trained staff only.
Handling Advice:	Avoid repeated freeze-thaw cycles.
Storage:	-20 °C
Storage Comment:	For short term use, store at 2-8°C up to 1 week. For long term storage, store at -20°C in small aliquots to prevent freeze-thaw cycles.

## Publications

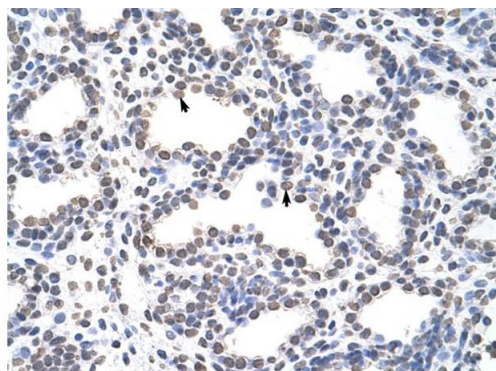
Product cited in:	van Dijk, Schilders, Pruijn: "Human cell growth requires a functional cytoplasmic exosome, which is involved in various mRNA decay pathways." in: <b>RNA (New York, N.Y.)</b> , Vol. 13, Issue 7, pp. 1027-35, (2007) ( <a href="#">PubMed</a> ).
-------------------	---

## Images



### Western Blotting

**Image 1.** WB Suggested Anti-CARS Antibody Titration: 0.2-1 ug/ml Positive Control: HepG2 cell lysate



Rabbit Anti-CARS Antibody  
Catalog Number: ARP40295  
Lot Number: QC10260  
Paraffin Embedded Tissue: Human Lung  
Cells with Positive label: Alveolar cells (Indicated with Arrows)  
Antibody Concentration: 4.0-8.0 µg/ml  
Magnification: 400X

### Immunohistochemistry

**Image 2.** Rabbit Anti-CARS Antibody Paraffin Embedded  
Tissue: Human Lung Cellular Data: Alveolar cells Antibody  
Concentration: 4.0-8.0 ug/ml Magnification: 400X