



Datasheet for ABIN2778733
anti-RAE1 antibody (C-Term)



[Go to Product page](#)

3 Images

Overview

Quantity:	100 µL
Target:	RAE1
Binding Specificity:	C-Term
Reactivity:	Human, Mouse, Rat, Dog, Cow, Zebrafish (Danio rerio), Horse, Rabbit, Guinea Pig
Host:	Rabbit
Clonality:	Polyclonal
Conjugate:	This RAE1 antibody is un-conjugated
Application:	Western Blotting (WB), Immunohistochemistry (IHC)

Product Details

Immunogen:	The immunogen is a synthetic peptide directed towards the C terminal region of human RAE1
Sequence:	EQLDQPISAC CFNHNGNIFA YASSYDWSKG HEFYNPQKKN YIFLRNAAEE
Predicted Reactivity:	Cow: 100%, Dog: 100%, Guinea Pig: 100%, Horse: 100%, Human: 100%, Mouse: 100%, Rabbit: 100%, Rat: 100%, Zebrafish: 93%
Characteristics:	This is a rabbit polyclonal antibody against RAE1. It was validated on Western Blot and immunohistochemistry.
Purification:	Affinity Purified

Target Details

Target:	RAE1
---------	------

Target Details

Alternative Name: [RAE1 \(RAE1 Products\)](#)

Background: RAE1 is a homolog of yeast Rae1. It contains four WD40 motifs, and has been shown to localize to distinct foci in the nucleoplasm, to the nuclear rim, and to meshwork-like structures throughout the cytoplasm. This gene is thought to be involved in nucleocytoplasmic transport, and in directly or indirectly attaching cytoplasmic mRNPs to the cytoskeleton. Mutations in the *Schizosaccharomyces pombe* Rae1 and *Saccharomyces cerevisiae* Gle2 genes have been shown to result in accumulation of poly(A)-containing mRNA in the nucleus, suggesting that the encoded proteins are involved in RNA export. The protein encoded by this gene is a homolog of yeast Rae1. It contains four WD40 motifs, and has been shown to localize to distinct foci in the nucleoplasm, to the nuclear rim, and to meshwork-like structures throughout the cytoplasm. This gene is thought to be involved in nucleocytoplasmic transport, and in directly or indirectly attaching cytoplasmic mRNPs to the cytoskeleton. Alternatively spliced transcript variants encoding the same protein have been found for this gene.

Alias Symbols: MIG14, MRNP41, Mnrp41, dJ481F12.3, dJ800J21.1

Protein Interaction Partner: TP53, CDC37, DGCR8, YAP1, STK3, EEF2K, SOX2, HNRNPUL1, YWHAQ, UBC, FN1, ZC3HAV1, UBD, DDX39B, NUP98, MAP2, NUMA1, RNA28S5, RNA18S5, LSM14A, IGF2BP3, NXF1, TACC3, DYNLL1, KHSRP, KPNB1, ILF3, COPS6, CUL1, CUL3, Nup214, Nup188, KAT2A, PTTG1, POLR3H, FAM122B,

Protein Size: 368

Molecular Weight: 40 kDa

Gene ID: 8480

NCBI Accession: [NM_001015885](#), [NP_001015885](#)

UniProt: [P78406](#)

Pathways: [SARS-CoV-2 Protein Interactome](#)

Application Details

Application Notes: Optimal working dilutions should be determined experimentally by the investigator.

Comment: Antigen size: 368 AA

Restrictions: For Research Use only

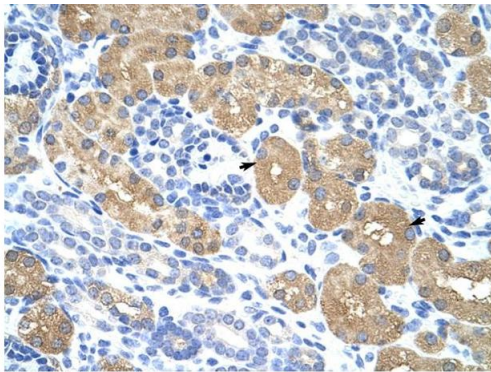
Handling

Format: Liquid

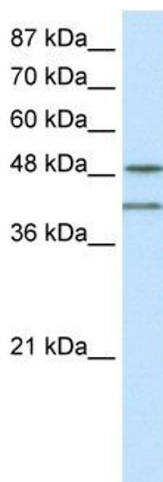
Handling

Concentration:	Lot specific
Buffer:	Liquid. Purified antibody supplied in 1x PBS buffer with 0.09 % (w/v) sodium azide and 2 % sucrose.
Preservative:	Sodium azide
Precaution of Use:	This product contains Sodium azide: a POISONOUS AND HAZARDOUS SUBSTANCE which should be handled by trained staff only.
Handling Advice:	Avoid repeated freeze-thaw cycles.
Storage:	-20 °C
Storage Comment:	For short term use, store at 2-8°C up to 1 week. For long term storage, store at -20°C in small aliquots to prevent freeze-thaw cycles.

Images



Rabbit Anti-RAE1 Antibody
Catalog Number: ARP40301
Lot Number: QC9629
Paraffin Embedded Tissue: Human Kidney
Cells with Positive label: Epithelial cells of renal tubule (Indicated with Arrows)
Antibody Concentration: 4.0-8.0 µg/ml
Magnification: 400X

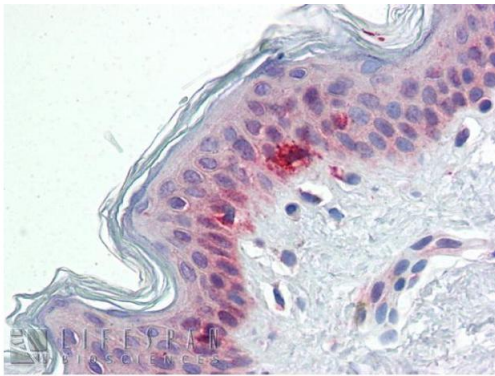


Immunohistochemistry

Image 1. Rabbit Anti-RAE1 Antibody Paraffin Embedded Tissue: Human Kidney Cellular Data: Epithelial cells of renal tubule Antibody Concentration: 4.0-8.0 µg/ml Magnification: 400X

Western Blotting

Image 2. WB Suggested Anti-RAE1 Antibody Titration: 0.2-1 µg/ml ELISA Titer: 1:312500 Positive Control: Jurkat cell lysate RAE1 is strongly supported by BioGPS gene expression data to be expressed in Human Jurkat cells



Rabbit Anti-RAE1 Antibody
Catalog Number: ARP40301
Lot Number: QC9629
Paraffin Embedded Tissue: Human Skin
Antibody Concentration: 5.0 µg/ml

Data courtesy of Lifespan Biosciences, Inc.

Immunohistochemistry

Image 3. Immunohistochemistry with Human Skin lysate tissue at an antibody concentration of 5.0ug/ml using anti-RAE1 antibody