

Datasheet for ABIN2778735
anti-RPS24 antibody (Middle Region)[Go to Product page](#)

2 Images

Overview

Quantity:	100 µL
Target:	RPS24
Binding Specificity:	Middle Region
Reactivity:	Human, Mouse, Rat, Rabbit, Cow, Dog, Guinea Pig, Horse, Zebrafish (Danio rerio)
Host:	Rabbit
Clonality:	Polyclonal
Conjugate:	This RPS24 antibody is un-conjugated
Application:	Western Blotting (WB)

Product Details

Immunogen:	The immunogen is a synthetic peptide directed towards the middle region of human RPS24
Sequence:	GFGMIYDSLD YAKKNEPKHR LARHGLYEKK KTSRKQRKER KNRMKKVRGT
Predicted Reactivity:	Cow: 100%, Dog: 100%, Guinea Pig: 100%, Horse: 100%, Human: 100%, Mouse: 100%, Rabbit: 100%, Rat: 100%, Zebrafish: 93%
Characteristics:	This is a rabbit polyclonal antibody against RPS24. It was validated on Western Blot using a cell lysate as a positive control.
Purification:	Affinity Purified

Target Details

Target:	RPS24
---------	-------

Target Details

Alternative Name:	RPS24 (RPS24 Products)
Background:	<p>Ribosomes, the organelles that catalyze protein synthesis, consist of a small 40S subunit and a large 60S subunit. Together these subunits are composed of 4 RNA species and approximately 80 structurally distinct proteins. This gene encodes a ribosomal protein.</p> <p>Alias Symbols: DBA3, DKFZp686N1586, S24</p> <p>Protein Interaction Partner: HUWE1, TP53, UBC, MDM2, EED, RNF2, NUP188, SPTAN1, RPS29, RPS28, RPS27, RPS26, RPS25, RPS23, RPS20, RPS19, RPS18, RPS16, RPS15A, RPS14, RPS13, RPS12, RPS11, RPS10, RPS9, RPS8, RPS7, RPS6, RPS5, RPS4X, RPS3A, EIF3CL, PRUNE2, WIBG, EIF2A, WDR26, PNO1, TSR1,</p> <p>Protein Size: 133</p>
Molecular Weight:	15 kDa
Gene ID:	6229
NCBI Accession:	NM_001026 , NP_001017
UniProt:	P62847

Application Details

Application Notes:	Optimal working dilutions should be determined experimentally by the investigator.
Comment:	Antigen size: 133 AA
Restrictions:	For Research Use only

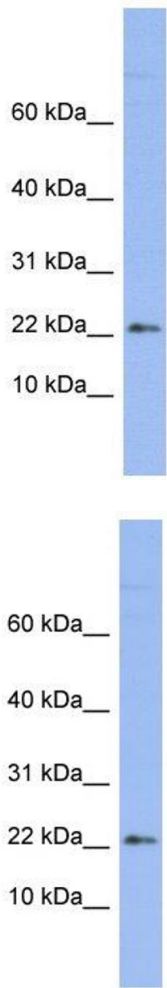
Handling

Format:	Liquid
Concentration:	Lot specific
Buffer:	Liquid. Purified antibody supplied in 1x PBS buffer with 0.09 % (w/v) sodium azide and 2 % sucrose.
Preservative:	Sodium azide
Precaution of Use:	This product contains Sodium azide: a POISONOUS AND HAZARDOUS SUBSTANCE which should be handled by trained staff only.
Handling Advice:	Avoid repeated freeze-thaw cycles.
Storage:	-20 °C

Handling

Storage Comment: For short term use, store at 2-8°C up to 1 week. For long term storage, store at -20°C in small aliquots to prevent freeze-thaw cycles.

Images



Western Blotting

Image 1. WB Suggested Anti-RPS24
Antibody Titration: 0.2-1 µg/mL ELISA Titer: 1:12500
Positive Control: OVCAR-3 cell lysate
RPS24 is supported by BioGPS gene expression data to be expressed in OVCAR3

Western Blotting

Image 2. WB Suggested Anti-RPS24 Antibody Titration: 0.2-1 ug/ml ELISA Titer: 1:312500 Positive Control: OVCAR-3 cell lysate RPS24 is supported by BioGPS gene expression data to be expressed in OVCAR3