

Datasheet for ABIN2778738  
**anti-SERBP1 antibody (C-Term)**



[Go to Product page](#)

2 Images

## Overview

Quantity:	100 µL
Target:	SERBP1
Binding Specificity:	C-Term
Reactivity:	Human, Mouse, Rat, Dog, Cow, Guinea Pig, Horse, Rabbit
Host:	Rabbit
Clonality:	Polyclonal
Conjugate:	This SERBP1 antibody is un-conjugated
Application:	Western Blotting (WB)

## Product Details

Immunogen:	The immunogen is a synthetic peptide directed towards the C terminal region of human SERBP1
Sequence:	PNEGADGQWK KGFVLHKSKE EEAHAEDSVM DHHFRKPAND ITSQLEINFG
Predicted Reactivity:	Cow: 100%, Dog: 100%, Guinea Pig: 100%, Horse: 86%, Human: 100%, Mouse: 100%, Rabbit: 100%, Rat: 100%
Characteristics:	This is a rabbit polyclonal antibody against SERBP1. It was validated on Western Blot.
Purification:	Affinity Purified

## Target Details

Target:	SERBP1
---------	--------

## Target Details

Alternative Name:	SERBP1 ( <a href="#">SERBP1 Products</a> )
Background:	<p>SERBP1 may play a role in the regulation of mRNA stability. It binds to the 3'-most 134 nt of the SERPINE1/PAI1 mRNA, a region which confers cyclic nucleotide regulation of message decay.</p> <p>Alias Symbols: CGI-55, CHD3IP, DKFZp564M2423, FLJ90489, HABP4L, PAI-RBP1, PAIRBP1</p> <p>Protein Interaction Partner: SERBP1, HUWE1, FUS, UBC, SUMO1, NEDD8, EIF2A, PRMT8, TSR1, DYNC1LI1, DYNC1I2, DYNC1H1, DYNLT3, RPS29, RPS26, RPS25, RPS24, RPS23, RPS20, RPS19, RPS14, RPS10, RPS6, RPS3, PARK2, UPF2, TARDBP, FBXO25, UBD, TERT, CD81, PAN2, MAP1LC3A, CSNK2A1, CTNNB1, MDC1,</p> <p>Protein Size: 408</p>
Molecular Weight:	45 kDa
Gene ID:	26135
NCBI Accession:	<a href="#">NM_001018067</a> , <a href="#">NP_001018077</a>
UniProt:	<a href="#">Q8NC51</a>

## Application Details

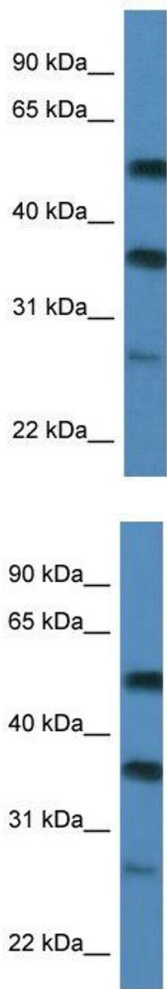
Application Notes:	Optimal working dilutions should be determined experimentally by the investigator.
Comment:	Antigen size: 408 AA
Restrictions:	For Research Use only

## Handling

Format:	Liquid
Concentration:	Lot specific
Buffer:	Liquid. Purified antibody supplied in 1x PBS buffer with 0.09 % (w/v) sodium azide and 2 % sucrose.
Preservative:	Sodium azide
Precaution of Use:	This product contains Sodium azide: a POISONOUS AND HAZARDOUS SUBSTANCE which should be handled by trained staff only.
Handling Advice:	Avoid repeated freeze-thaw cycles.
Storage:	-20 °C
Storage Comment:	For short term use, store at 2-8°C up to 1 week. For long term storage, store at -20°C in small

aliquots to prevent freeze-thaw cycles.

Images



Western Blotting

**Image 1.** WB Suggested Anti-SERBP1  
Antibody Titration: 0.2-1 µg/mL ELISA Titer: 1::2500  
Positive Control: MCF7 cell lysate  
There is BioGPS gene expression data showing that SERBP1 is expressed in MCF7

Western Blotting

**Image 2.** WB Suggested Anti-SERBP1 Antibody Titration: 0.2-1 ug/ml ELISA Titer: 1:62500 Positive Control: MCF7 cell lysate  
There is BioGPS gene expression data showing that SERBP1 is expressed in MCF7