

Datasheet for ABIN2778745
anti-CELF2 antibody (N-Term)

5 Images

[Go to Product page](#)

Overview

Quantity:	100 µL
Target:	CELF2
Binding Specificity:	N-Term
Reactivity:	Human, Mouse, Rat, Zebrafish (Danio rerio), Cow, Dog, Rabbit, Guinea Pig, Horse
Host:	Rabbit
Clonality:	Polyclonal
Conjugate:	This CELF2 antibody is un-conjugated
Application:	Western Blotting (WB), Immunohistochemistry (IHC)

Product Details

Immunogen:	The immunogen is a synthetic peptide directed towards the N terminal region of human CUGBP2
Sequence:	VYQINVLRRD SQNPPQSKGC CFVTFYTRKA ALEAQNALHN IKTLPGMHHP
Predicted Reactivity:	Cow: 100%, Dog: 100%, Guinea Pig: 100%, Horse: 100%, Human: 100%, Mouse: 100%, Rabbit: 100%, Rat: 100%, Zebrafish: 100%
Characteristics:	This is a rabbit polyclonal antibody against CUGBP2. It was validated on Western Blot and immunohistochemistry.
Purification:	Protein A purified

Target Details

Target:	CELF2
---------	-------

Target Details

Alternative Name:	CUGBP2 (CELF2 Products)
Background:	<p>Members of the CELF/BRUNOL protein family contain two N-terminal RNA recognition motif (RRM) domains, one C-terminal RRM domain, and a divergent segment of 160-230 aa between the second and third RRM domains. Members of this protein family regulate pre-mRNA alternative splicing and may also be involved in mRNA editing, and translation. Members of the CELF/BRUNOL protein family contain two N-terminal RNA recognition motif (RRM) domains, one C-terminal RRM domain, and a divergent segment of 160-230 aa between the second and third RRM domains. Members of this protein family regulate pre-mRNA alternative splicing and may also be involved in mRNA editing, and translation. Alternative splicing results in multiple transcript variants encoding different isoforms.</p> <p>Alias Symbols: ETR3, ETR-3, NAPOR, CUGBP2, BRUNOL3</p> <p>Protein Interaction Partner: PTGS2, ELAVL1, UBC, FN1, APP, PCBP1, A1CF, APOBEC1, Apob,</p> <p>Protein Size: 509</p>
Molecular Weight:	56 kDa
Gene ID:	10659
NCBI Accession:	NM_006561 , NP_006552
UniProt:	Q96RQ6
Pathways:	Ribonucleoprotein Complex Subunit Organization

Application Details

Application Notes:	Optimal working dilutions should be determined experimentally by the investigator.
Comment:	Antigen size: 509 AA
Restrictions:	For Research Use only

Handling

Format:	Liquid
Concentration:	Lot specific
Buffer:	Liquid. Purified antibody supplied in 1x PBS buffer with 0.09 % (w/v) sodium azide and 2 % sucrose.
Preservative:	Sodium azide
Precaution of Use:	This product contains Sodium azide: a POISONOUS AND HAZARDOUS SUBSTANCE which

Handling

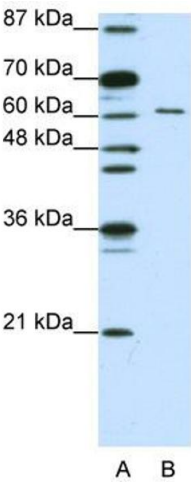
should be handled by trained staff only.

Handling Advice: Avoid repeated freeze-thaw cycles.

Storage: -20 °C

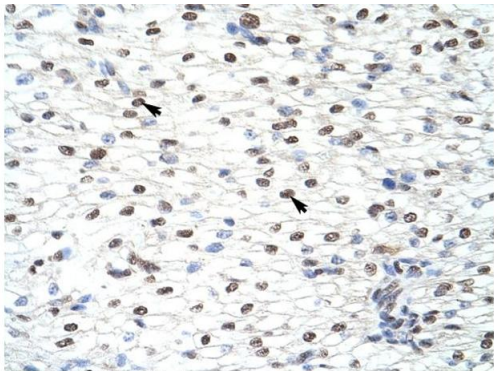
Storage Comment: For short term use, store at 2-8°C up to 1 week. For long term storage, store at -20°C in small aliquots to prevent freeze-thaw cycles.

Images



Western Blotting

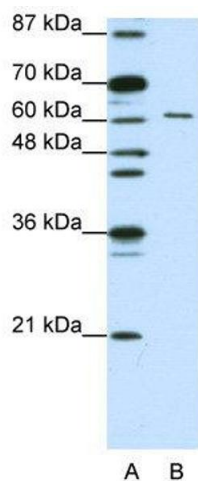
Image 1. WB Suggested Anti-CUGBP2 Antibody Titration: 1.25ug/ml ELISA Titer: 1:312500 Positive Control: Jurkat cell lysate CELF2 is strongly supported by BioGPS gene expression data to be expressed in Human Jurkat cells



Rabbit Anti-CUGBP2 Antibody
Catalog Number: ARP40323
Lot Number: QC9637
Paraffin Embedded Tissue: Human Heart
Cells with Positive label: Myocardial cells (Indicated with Arrows)
Antibody Concentration: 4.0-8.0 µg/ml
Magnification: 400X

Immunohistochemistry

Image 2. Rabbit Anti-CUGBP2 Antibody Paraffin Embedded Tissue: Human Heart Cellular Data: Myocardial cells Antibody Concentration: 4.0-8.0 ug/ml Magnification: 400X



Western Blotting

Image 3. WB Suggested Anti-CUGBP2

Antibody Titration: 1.25 µg/mL ELISA Titer: 1:312500

Positive Control: Jurkat cell lysate

CELF2 is strongly supported by BioGPS gene expression data to be expressed in Human Jurkat cells

Please check the [product details page](#) for more images. Overall 5 images are available for ABIN2778745.