



[Go to Product page](#)

Datasheet for ABIN2778749

anti-CELF1 antibody (Middle Region)

2 Images

Overview

Quantity:	100 µL
Target:	CELF1
Binding Specificity:	Middle Region
Reactivity:	Human, Mouse, Rat, Cow, Zebrafish (Danio rerio), Rabbit, Dog, Guinea Pig, Horse
Host:	Rabbit
Clonality:	Polyclonal
Conjugate:	This CELF1 antibody is un-conjugated
Application:	Western Blotting (WB), Immunohistochemistry (IHC)

Product Details

Immunogen:	The immunogen is a synthetic peptide directed towards the N terminal region of human CUGBP1
Sequence:	QMKPADSEKN NVEDRKLFIG MISKKCTEND IRVMFSSFGQ IECCRILRGP
Predicted Reactivity:	Cow: 100%, Dog: 100%, Guinea Pig: 100%, Horse: 100%, Human: 100%, Mouse: 100%, Rabbit: 100%, Rat: 100%, Zebrafish: 100%
Characteristics:	This is a rabbit polyclonal antibody against CUGBP1. It was validated on Western Blot.
Purification:	Affinity Purified

Target Details

Target:	CELF1
---------	-------

Target Details

Alternative Name:	CUGBP1 (CELF1 Products)
Background:	<p>Members of the CELF/BRUNOL protein family contain two N-terminal RNA recognition motif (RRM) domains, one C-terminal RRM domain, and a divergent segment of 160-230 aa between the second and third RRM domains. Members of this protein family regulate pre-mRNA alternative splicing and may also be involved in mRNA editing, and translation. This gene may play a role in myotonic dystrophy type 1 (DM1) via interactions with the dystrophin myotonic-protein kinase (DMPK) gene.</p> <p>Alias Symbols: BRUNOL2, CUG-BP, CUGBP, CUGBP1, EDEN-BP, NAB50, NAPOR, hNab50</p> <p>Protein Interaction Partner: UBC, MDM2, RPA3, RPA2, RPA1, BMI1, TARDBP, RALY, HNRNPC, APP, ELAVL1, SUMO2, USP10, FUBP1, PPBP, DMPK, TOM1L1, CELF1,</p> <p>Protein Size: 512</p>
Molecular Weight:	56 kDa
Gene ID:	10658
NCBI Accession:	NM_001172639 , NP_001166110
Pathways:	Ribonucleoprotein Complex Subunit Organization

Application Details

Application Notes:	Optimal working dilutions should be determined experimentally by the investigator.
Comment:	Antigen size: 512 AA
Restrictions:	For Research Use only

Handling

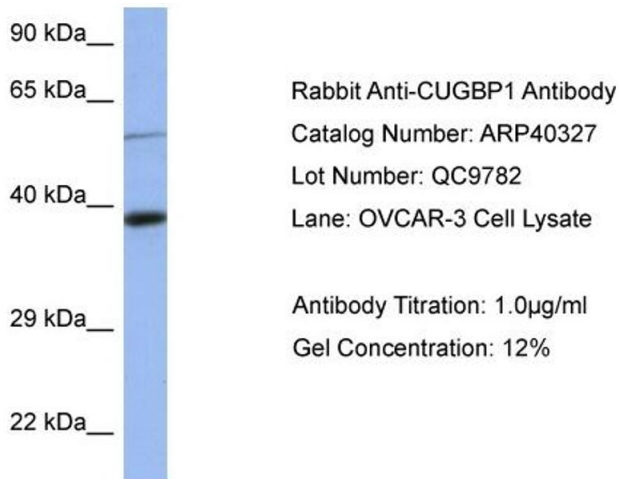
Format:	Liquid
Concentration:	Lot specific
Buffer:	Liquid. Purified antibody supplied in 1x PBS buffer with 0.09 % (w/v) sodium azide and 2 % sucrose.
Preservative:	Sodium azide
Precaution of Use:	This product contains Sodium azide: a POISONOUS AND HAZARDOUS SUBSTANCE which should be handled by trained staff only.
Handling Advice:	Avoid repeated freeze-thaw cycles.

Handling

Storage: -20 °C

Storage Comment: For short term use, store at 2-8°C up to 1 week. For long term storage, store at -20°C in small aliquots to prevent freeze-thaw cycles.

Images



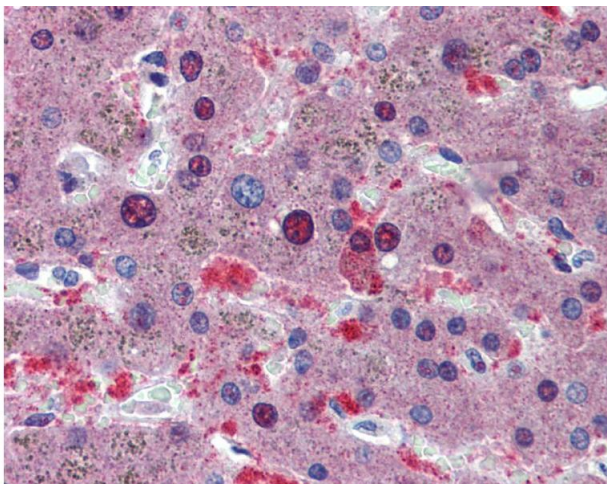
Western Blotting

Image 1. WB Suggested Anti-CUGBP1 Antibody Titration:

0.2-1 ug/ml

ELISA Titer: 1:12500

Positive Control: Jurkat cell lysate



Immunohistochemistry

Image 2.