



[Go to Product page](#)

Datasheet for ABIN2778750

## anti-RPS29 antibody (N-Term)

3 Images

1 Publication

### Overview

Quantity:	100 µL
Target:	RPS29
Binding Specificity:	N-Term
Reactivity:	Human, Mouse, Rat, Dog, Cow, Rabbit, Guinea Pig, Horse, Saccharomyces cerevisiae, Zebrafish (Danio rerio)
Host:	Rabbit
Clonality:	Polyclonal
Conjugate:	This RPS29 antibody is un-conjugated
Application:	Western Blotting (WB), Immunohistochemistry (IHC)

### Product Details

Immunogen:	The immunogen is a synthetic peptide directed towards the N terminal region of human RPS29
Sequence:	YWSHPRKFGQ GSRSCRVCSN RHGLIRKYGL NMCRCQFRQY AKDIGFIKLD
Predicted Reactivity:	Cow: 100%, Dog: 86%, Guinea Pig: 100%, Horse: 93%, Human: 100%, Mouse: 100%, Rabbit: 100%, Rat: 100%, Yeast: 75%, Zebrafish: 93%
Characteristics:	This is a rabbit polyclonal antibody against RPS29. It was validated on Western Blot using a cell lysate as a positive control.
Purification:	Protein A purified

### Target Details

Target:	RPS29
---------	-------

## Target Details

---

Alternative Name: RPS29 ([RPS29 Products](#))

---

Background: Ribosomes, the organelles that catalyze protein synthesis, consist of a small 40S subunit and a large 60S subunit. Together these subunits are composed of 4 RNA species and approximately 80 structurally distinct proteins. RPS29 is a ribosomal protein that is a component of the 40S subunit and a member of the S14P family of ribosomal proteins. The protein, which contains a C2-C2 zinc finger-like domain that can bind to zinc, can enhance the tumor suppressor activity of Ras-related protein 1A (KREV1). It is located in the cytoplasm. Ribosomes, the organelles that catalyze protein synthesis, consist of a small 40S subunit and a large 60S subunit. Together these subunits are composed of 4 RNA species and approximately 80 structurally distinct proteins. This gene encodes a ribosomal protein that is a component of the 40S subunit and a member of the S14P family of ribosomal proteins. The protein, which contains a C2-C2 zinc finger-like domain that can bind to zinc, can enhance the tumor suppressor activity of Ras-related protein 1A (KREV1). It is located in the cytoplasm. Variable expression of this gene in colorectal cancers compared to adjacent normal tissues has been observed, although no correlation between the level of expression and the severity of the disease has been found. As is typical for genes encoding ribosomal proteins, there are multiple processed pseudogenes of this gene dispersed through the genome.

Alias Symbols: S29

Protein Interaction Partner: UBC, FbxI16, ZBTB1, RPS17, WIBG, EIF2A, TSR1, SERBP1, LARP1, DYNLT3, RPS28, RPS26, RPS25, RPS24, RPS23, RPS20, RPS19, RPS18, RPS16, RPS15A, RPS15, RPS14, RPS13, RPS12, RPS10, RPS9, RPS8, RPS7, RPS6, RPS5, RPS4X, RPS3A, RPS3, RPS2, RPL28, HNRNPU, FAU, CTBP

Protein Size: 56

---

Molecular Weight: 6 kDa

---

Gene ID: 6235

---

NCBI Accession: [NM\\_001032](#), [NP\\_001023](#)

---

UniProt: [P62273](#)

---

## Application Details

---

Application Notes: Optimal working dilutions should be determined experimentally by the investigator.

---

Comment: Antigen size: 56 AA

---

Restrictions: For Research Use only

---

## Handling

Format:	Liquid
Concentration:	Lot specific
Buffer:	Liquid. Purified antibody supplied in 1x PBS buffer with 0.09 % (w/v) sodium azide and 2 % sucrose.
Preservative:	Sodium azide
Precaution of Use:	This product contains Sodium azide: a POISONOUS AND HAZARDOUS SUBSTANCE which should be handled by trained staff only.
Handling Advice:	Avoid repeated freeze-thaw cycles.
Storage:	-20 °C
Storage Comment:	For short term use, store at 2-8°C up to 1 week. For long term storage, store at -20°C in small aliquots to prevent freeze-thaw cycles.

## Publications

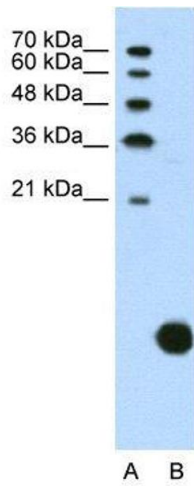
Product cited in: Sugatani, Nishitani, Yamakawa, Yoshinari, Sueyoshi, Negishi, Miwa: "Transcriptional regulation of human UGT1A1 gene expression: activated glucocorticoid receptor enhances constitutive androstane receptor/pregnane X receptor-mediated UDP-glucuronosyltransferase 1A1 regulation with glucocorticoid receptor-interacting protei" in: **Molecular pharmacology**, Vol. 67, Issue 3, pp. 845-55, (2005) ([PubMed](#)).

## Images



### Western Blotting

**Image 1.** WB Suggested Anti-RPS29 Antibody Titration: 1.25ug/ml Positive Control: Jurkat cell lysate RPS29 is supported by BioGPS gene expression data to be expressed in Jurkat



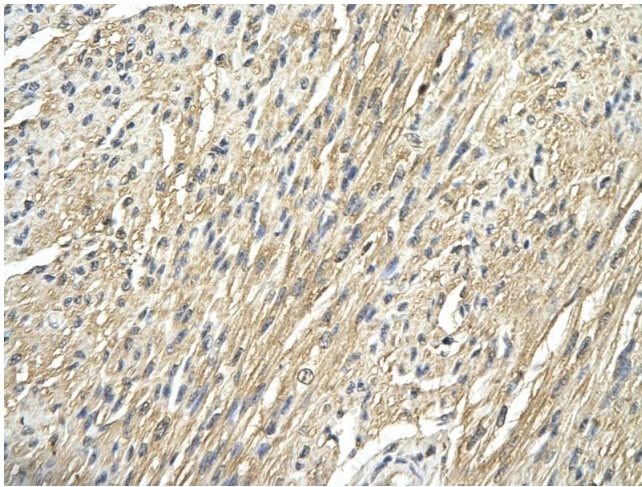
### Western Blotting

#### Image 2. WB Suggested Anti-RPS29

Antibody Titration: 1.25 µg/mL

Positive Control: Jurkat cell lysate

RPS29 is supported by BioGPS gene expression data to be expressed in Jurkat



### Immunohistochemistry

#### Image 3. Rabbit Anti-RPS29 antibody Paraffin Embedded

Tissue: Human Heart Cellular Data: cardiac cells Antibody

Concentration: 4.0-8.0 ug/ml Magnification: 400X