

Datasheet for ABIN2778751

anti-SLC35F1 antibody (N-Term)[Go to Product page](#)**1** Image

Overview

Quantity:	100 µL
Target:	SLC35F1
Binding Specificity:	N-Term
Reactivity:	Human, Mouse, Dog, Guinea Pig
Host:	Rabbit
Clonality:	Polyclonal
Conjugate:	This SLC35F1 antibody is un-conjugated
Application:	Western Blotting (WB)

Product Details

Immunogen:	The immunogen is a synthetic peptide directed towards the N terminal region of human SLC35F1
Sequence:	MIPPEQPQQQ LQPPSPAPPN HVTTIENLP AEGSGGGGSL SASSRAGVRQ
Predicted Reactivity:	Dog: 83%, Guinea Pig: 83%, Human: 100%, Mouse: 80%
Characteristics:	This is a rabbit polyclonal antibody against SLC35F1. It was validated on Western Blot using a cell lysate as a positive control.
Purification:	Affinity Purified

Target Details

Target:	SLC35F1
---------	---------

Target Details

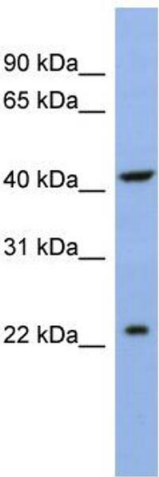
Alternative Name:	SLC35F1 (SLC35F1 Products)
Background:	SLC35F1 is a putative solute transporter. Alias Symbols: C6orf169, FLJ13018, dJ230I3.1 Protein Size: 408
Molecular Weight:	45 kDa
Gene ID:	222553
NCBI Accession:	NM_001029858 , NP_001025029
UniProt:	Q5T1Q4

Application Details

Application Notes:	Optimal working dilutions should be determined experimentally by the investigator.
Comment:	Antigen size: 408 AA
Restrictions:	For Research Use only

Handling

Format:	Liquid
Concentration:	Lot specific
Buffer:	Liquid. Purified antibody supplied in 1x PBS buffer with 0.09 % (w/v) sodium azide and 2 % sucrose.
Preservative:	Sodium azide
Precaution of Use:	This product contains Sodium azide: a POISONOUS AND HAZARDOUS SUBSTANCE which should be handled by trained staff only.
Handling Advice:	Avoid repeated freeze-thaw cycles.
Storage:	-20 °C
Storage Comment:	For short term use, store at 2-8°C up to 1 week. For long term storage, store at -20°C in small aliquots to prevent freeze-thaw cycles.



Western Blotting

Image 1. WB Suggested Anti-SLC35F1 Antibody Titration:
0.2-1 ug/ml ELISA Titer: 1:312500 Positive Control: OVCAR-3 cell lysate