

Datasheet for ABIN2778756  
**anti-RBM9 antibody (Middle Region)**

## 3 Images

[Go to Product page](#)

## Overview

Quantity:	100 µL
Target:	RBM9
Binding Specificity:	Middle Region
Reactivity:	Human, Mouse, Rat, Cow, Dog, Horse, Rabbit, Guinea Pig, Zebrafish (Danio rerio)
Host:	Rabbit
Clonality:	Polyclonal
Conjugate:	This RBM9 antibody is un-conjugated
Application:	Western Blotting (WB), Immunohistochemistry (IHC)

## Product Details

Immunogen:	The immunogen is a synthetic peptide directed towards the middle region of human RBM9
Sequence:	TAAAAAAAY SDGYGRVYTA DPYHALAPAA SYGVGAVASL YRGGYSRFAP
Predicted Reactivity:	Cow: 100%, Dog: 100%, Guinea Pig: 100%, Horse: 100%, Human: 100%, Mouse: 100%, Rabbit: 100%, Rat: 100%, Zebrafish: 93%
Characteristics:	This is a rabbit polyclonal antibody against RBM9. It was validated on Western Blot using a cell lysate as a positive control.
Purification:	Affinity Purified

## Target Details

Target:	RBM9
---------	------

## Target Details

Alternative Name:	RBM9 ( <a href="#">RBM9 Products</a> )
Background:	<p>RBM9 is a RNA-binding protein that seems to act as a coregulatory factor of ER-alpha.</p> <p>Alias Symbols: Fox-2, HNRBP2, HRNBP2, RTA, dJ106I20.3, fxh, FOX2, RBM9</p> <p>Protein Interaction Partner: MAPK1IP1L, NAF1, C1orf94, BOLL, VAC14, DAZAP2, MAGED1, RNF8, ATXN1, PSMA3, HNRNPF, DAB1, CAMK2B, RPA3, RPA2, RPA1, BMI1, ELAVL1, DDX5, RBM42, RBM22, RBM23, APH1A, RBFOX2, U2AF2, KHDRBS1, SF3A1, PSMF1, QKI, SNRPC, SMN1, PTBP1, HNRNPK, HNRNPH2, VCP, ATXN1L,</p> <p>Protein Size: 380</p>
Molecular Weight:	40 kDa
Gene ID:	23543
NCBI Accession:	<a href="#">NM_001031695</a> , <a href="#">NP_001026865</a>
UniProt:	<a href="#">C9JE97</a>
Pathways:	<a href="#">Intracellular Steroid Hormone Receptor Signaling Pathway</a> , <a href="#">Skeletal Muscle Fiber Development</a>

## Application Details

Application Notes:	Optimal working dilutions should be determined experimentally by the investigator.
Comment:	Antigen size: 380 AA
Restrictions:	For Research Use only

## Handling

Format:	Liquid
Concentration:	Lot specific
Buffer:	Liquid. Purified antibody supplied in 1x PBS buffer with 0.09 % (w/v) sodium azide and 2 % sucrose.
Preservative:	Sodium azide
Precaution of Use:	This product contains Sodium azide: a POISONOUS AND HAZARDOUS SUBSTANCE which should be handled by trained staff only.
Handling Advice:	Avoid repeated freeze-thaw cycles.
Storage:	-20 °C
Storage Comment:	For short term use, store at 2-8°C up to 1 week. For long term storage, store at -20°C in small

aliquots to prevent freeze-thaw cycles.

Images

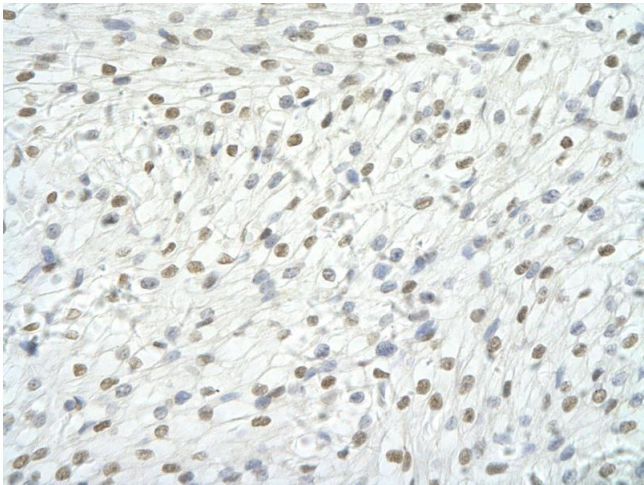


Western Blotting

**Image 1.** WB Suggested Anti-RBM9 Antibody Titration: 0.2-1 ug/ml ELISA Titer: 1:62500 Positive Control: NCI-H226 cell lysate RBFOX2 is supported by BioGPS gene expression data to be expressed in NCIH226

Western Blotting

**Image 2.** WB Suggested Anti-RBM9 Antibody Titration: 0.2-1 µg/mL ELISA Titer: 1::2500 Positive Control: NCI-H226 cell lysate RBFOX2 is supported by BioGPS gene expression data to be expressed in NCIH226



Immunohistochemistry

**Image 3.** Rabbit Anti-RBM9 antibody Paraffin Embedded Tissue: Human Heart cell Cellular Data: cardiac cell of renal tubule Antibody Concentration: 4.0-8.0 ug/ml Magnification: 400X