

Datasheet for ABIN2778760  
**anti-CDC5L antibody (Middle Region)**[Go to Product page](#)

## 2 Images

## Overview

Quantity:	100 µL
Target:	CDC5L
Binding Specificity:	Middle Region
Reactivity:	Human, Mouse, Rat, Zebrafish (Danio rerio), Rabbit, Horse, Dog, Guinea Pig, Goat, Cow, Saccharomyces cerevisiae
Host:	Rabbit
Clonality:	Polyclonal
Conjugate:	This CDC5L antibody is un-conjugated
Application:	Immunohistochemistry (IHC), Western Blotting (WB)

## Product Details

Immunogen:	The immunogen is a synthetic peptide directed towards the middle region of human CDC5L
Sequence:	LHWYTGEGMD EMEFTEAESN MNDLVSEYQQ YQDATADEQG EEEEEEGEDE
Predicted Reactivity:	Cow: 100%, Dog: 100%, Goat: 100%, Guinea Pig: 100%, Horse: 100%, Human: 100%, Mouse: 100%, Rabbit: 100%, Rat: 100%, Yeast: 90%, Zebrafish: 100%
Characteristics:	This is a rabbit polyclonal antibody against CDC5L. It was validated on Western Blot using a cell lysate as a positive control.
Purification:	Affinity Purified

## Target Details

Target:	CDC5L
---------	-------

## Target Details

Alternative Name:	CDC5L ( <a href="#">CDC5L Products</a> )
Background:	<p>CDC5L shares a significant similarity with Schizosaccharomyces pombe cdc5 gene product, which is a cell cycle regulator important for G2/M transition. CDC5L has been demonstrated to act as a positive regulator of cell cycle G2/M progression. It was also found to be an essential component of a non-snRNA spliceosome, which contains at least five additional protein factors and is required for the second catalytic step of pre-mRNA splicing. The protein encoded by this gene shares a significant similarity with Schizosaccharomyces pombe cdc5 gene product, which is a cell cycle regulator important for G2/M transition. This protein has been demonstrated to act as a positive regulator of cell cycle G2/M progression. It was also found to be an essential component of a non-snRNA spliceosome, which contains at least five additional protein factors and is required for the second catalytic step of pre-mRNA splicing. Publication Note: This RefSeq record includes a subset of the publications that are available for this gene. Please see the Entrez Gene record to access additional publications.</p> <p>Alias Symbols: CEF1, KIAA0432, PCDC5RP, dJ319D22.1, hCDC5, CDC5, CDC5-LIKE</p> <p>Protein Interaction Partner: GOLGA2, FUS, GOLGA8F, GOLGA8EP, STAU1, UBC, LIN28A, RPA3, RPA2, RPA1, ERG, WWOX, TCP1, EED, rev, TARDBP, CSNK2A2, EMID1, CDT1, MCM10, BCAS2, GRB14, CDKN2A, CDKN1A, WHSC1, SMARCD1, ORC5, ORC2, ORC1, MCM5, MCM4, MCM3, LM02, KRT18, EIF4A3, MAGOH, PAXIP1, MDC</p> <p>Protein Size: 802</p>
Molecular Weight:	92 kDa
Gene ID:	988
NCBI Accession:	<a href="#">NM_001253</a> , <a href="#">NP_001244</a>
UniProt:	<a href="#">Q99459</a>
Pathways:	<a href="#">Activation of Innate immune Response</a> , <a href="#">Chromatin Binding</a>

## Application Details

Application Notes:	Optimal working dilutions should be determined experimentally by the investigator.
Comment:	Antigen size: 802 AA
Restrictions:	For Research Use only

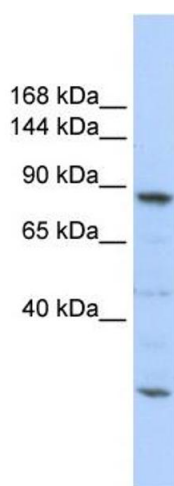
## Handling

Format:	Liquid
---------	--------

## Handling

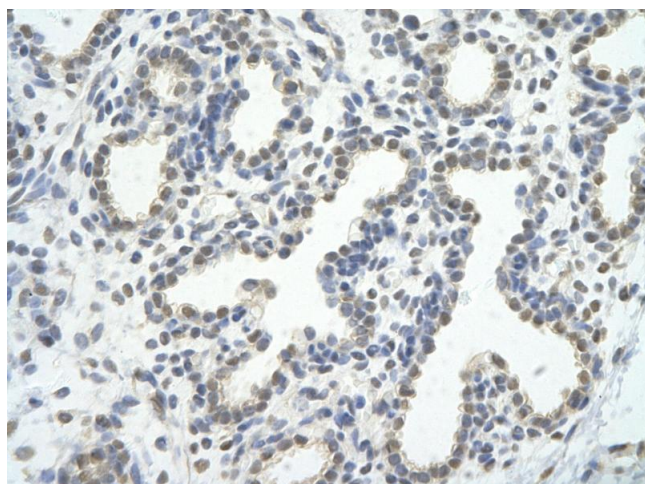
Concentration:	Lot specific
Buffer:	Liquid. Purified antibody supplied in 1x PBS buffer with 0.09 % (w/v) sodium azide and 2 % sucrose.
Preservative:	Sodium azide
Precaution of Use:	This product contains Sodium azide: a POISONOUS AND HAZARDOUS SUBSTANCE which should be handled by trained staff only.
Handling Advice:	Avoid repeated freeze-thaw cycles.
Storage:	-20 °C
Storage Comment:	For short term use, store at 2-8°C up to 1 week. For long term storage, store at -20°C in small aliquots to prevent freeze-thaw cycles.

## Images



### Western Blotting

**Image 1.** WB Suggested Anti-CDC5L Antibody Titration: 0.2-1 ug/ml ELISA Titer: 1:312500 Positive Control: 721\_B cell lysate CDC5L is supported by BioGPS gene expression data to be expressed in 721\_B



### Immunohistochemistry

**Image 2.** Rabbit Anti-CDC5L antibody Paraffin Embedded Tissue: Human Lung cell Cellular Data: alveolar cell of renal tubule Antibody Concentration: 4.0-8.0 ug/ml Magnification: 400X