

Datasheet for ABIN2778763

anti-CSH1 antibody (Middle Region)**2** Images[Go to Product page](#)

Overview

Quantity:	100 µL
Target:	CSH1
Binding Specificity:	Middle Region
Reactivity:	Human, Mouse, Rat, Dog, Guinea Pig, Rabbit
Host:	Rabbit
Clonality:	Polyclonal
Conjugate:	This CSH1 antibody is un-conjugated
Application:	Western Blotting (WB), Immunohistochemistry (IHC)

Product Details

Immunogen:	The immunogen is a synthetic peptide directed towards the middle region of human CSH1
Sequence:	SMFANNLVYD TSDSDDYHLL KDLEEGIQTL MGRLEDGSRR TGQILKQTYS
Predicted Reactivity:	Dog: 100%, Guinea Pig: 100%, Human: 100%, Mouse: 100%, Rabbit: 100%, Rat: 100%
Characteristics:	This is a rabbit polyclonal antibody against CSH1. It was validated on Western Blot and immunohistochemistry.
Purification:	Protein A purified

Target Details

Target:	CSH1
Alternative Name:	CSH1 (CSH1 Products)

Target Details

Background:	<p>CSH1 is a member of the somatotropin/prolactin family of hormones and plays an important role in growth control. This particular family member is expressed mainly in the placenta and utilizes multiple transcription initiation sites. Expression of the identical mature proteins for chorionic somatomammotropin hormones 1 and 2 is upregulated during development, although the ratio of 1 to 2 increases by term. Mutations in this gene result in placental lactogen deficiency and Silver-Russell syndrome. The protein encoded by this gene is a member of the somatotropin/prolactin family of hormones and plays an important role in growth control. The gene is located at the growth hormone locus on chromosome 17 along with four other related genes in the same transcriptional orientation, an arrangement which is thought to have evolved by a series of gene duplications. Although the five genes share a remarkably high degree of sequence identity, they are expressed selectively in different tissues. Alternative splicing generates additional isoforms of each of the five growth hormones, leading to further diversity and potential for specialization. This particular family member is expressed mainly in the placenta and utilizes multiple transcription initiation sites. Expression of the identical mature proteins for chorionic somatomammotropin hormones 1 and 2 is upregulated during development, although the ratio of 1 to 2 increases by term. Mutations in this gene result in placental lactogen deficiency and Silver-Russell syndrome.</p> <p>Alias Symbols: PL, CSA, CS-1, CSMT, hCS-A</p> <p>Protein Interaction Partner: PSMD9, PTPN12, SMAD9, SMAD4, SMAD2, PRLR, POLR2A, SMAD3,</p> <p>Protein Size: 217</p>
-------------	--

Molecular Weight:	24 kDa
Gene ID:	1442
NCBI Accession:	NM_001317 , NP_001308
UniProt:	P01243
Pathways:	Response to Growth Hormone Stimulus

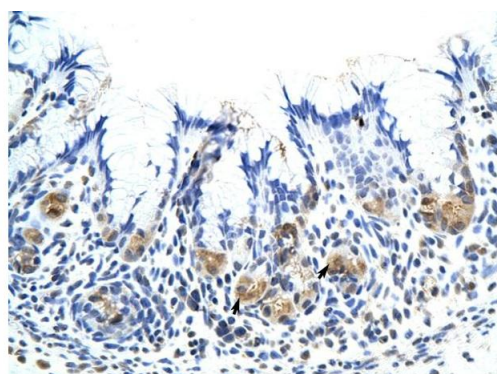
Application Details

Application Notes:	Optimal working dilutions should be determined experimentally by the investigator.
Comment:	Antigen size: 217 AA
Restrictions:	For Research Use only

Handling

Format:	Liquid
Concentration:	Lot specific
Buffer:	Liquid. Purified antibody supplied in 1x PBS buffer with 0.09 % (w/v) sodium azide and 2 % sucrose.
Preservative:	Sodium azide
Precaution of Use:	This product contains Sodium azide: a POISONOUS AND HAZARDOUS SUBSTANCE which should be handled by trained staff only.
Handling Advice:	Avoid repeated freeze-thaw cycles.
Storage:	-20 °C
Storage Comment:	For short term use, store at 2-8°C up to 1 week. For long term storage, store at -20°C in small aliquots to prevent freeze-thaw cycles.

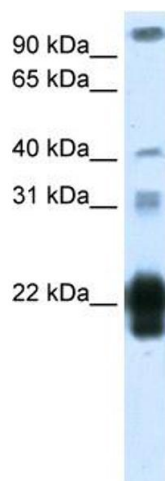
Images



Rabbit Anti-CSH1 Antibody
Catalog Number: ARP40350
Lot Number: QC9702
Paraffin Embedded Tissue: Human Stomach
Cells with Positive label: Epithelial cells of fundic gland (Indicated with Arrows)
Antibody Concentration: 4.0-8.0 µg/ml
Magnification: 400X

Immunohistochemistry

Image 1. Rabbit Anti-CSH1 Antibody Paraffin Embedded Tissue: Human Stomach Cellular Data: Epithelial cells of fundic gland Antibody Concentration: 4.0-8.0 µg/ml Magnification: 400X



Western Blotting

Image 2. WB Suggested Anti-CSH1 Antibody Titration: 1.25µg/ml ELISA Titer: 1:312500 Positive Control: Human Placenta