

Datasheet for ABIN2778764  
**anti-CSTF2 antibody (N-Term)**[Go to Product page](#)

## 4 Images

## Overview

Quantity:	100 µL
Target:	CSTF2
Binding Specificity:	N-Term
Reactivity:	Human, Mouse, Rat, Cow, Dog, Rabbit, Guinea Pig, Horse
Host:	Rabbit
Clonality:	Polyclonal
Conjugate:	This CSTF2 antibody is un-conjugated
Application:	Western Blotting (WB), Immunohistochemistry (IHC)

## Product Details

Immunogen:	The immunogen is a synthetic peptide directed towards the N terminal region of human CSTF2
Sequence:	VDPEIALKIL HRQTNIPTLI AGNPQPVHGA GPGSGSNVSM NQQNPQAPQA
Predicted Reactivity:	Cow: 85%, Dog: 85%, Guinea Pig: 86%, Horse: 86%, Human: 100%, Mouse: 86%, Rabbit: 100%, Rat: 93%
Characteristics:	This is a rabbit polyclonal antibody against CSTF2. It was validated on Western Blot using a cell lysate as a positive control.
Purification:	Affinity Purified

## Target Details

Target:	CSTF2
---------	-------

## Target Details

Alternative Name:	CSTF2 ( <a href="#">CSTF2 Products</a> )
Background:	<p>CSTF2 is a nuclear protein with an RRM (RNA recognition motif) domain. The protein is a member of the cleavage stimulation factor (CSTF) complex that is involved in the 3' end cleavage and polyadenylation of pre-mRNAs. Specifically, this protein binds GU-rich elements within the 3'-untranslated region of mRNAs. This gene encodes a nuclear protein with an RRM (RNA recognition motif) domain. The protein is a member of the cleavage stimulation factor (CSTF) complex that is involved in the 3' end cleavage and polyadenylation of pre-mRNAs. Specifically, this protein binds GU-rich elements within the 3'-untranslated region of mRNAs.</p> <p>Publication Note: This RefSeq record includes a subset of the publications that are available for this gene. Please see the Entrez Gene record to access additional publications.</p> <p>Alias Symbols: CstF-64</p> <p>Protein Interaction Partner: UBQLN1, SPAG8, SS18L1, TFG, HGS, RBBP6, ZNF341, UBC, WWOX, rev, LSM8, GET4, BABAM1, AKAP2, MAP4, CDKN2A, PARN, BARD1, CPSF2, CPSF3, CPSF6, NUP153, MAX, EIF4B, DDX1, DDB1, CSTF3, APP, UBQLN4, POLR2A, CDC73, SRRM1, UL48, KIAA1377, EEF1G, FEZ1, SYMPK, CHD3,</p> <p>Protein Size: 577</p>
Molecular Weight:	61 kDa
Gene ID:	1478
NCBI Accession:	<a href="#">NM_001325</a> , <a href="#">NP_001316</a>
UniProt:	<a href="#">P33240</a>

## Application Details

Application Notes:	Optimal working dilutions should be determined experimentally by the investigator.
Comment:	Antigen size: 577 AA
Restrictions:	For Research Use only

## Handling

Format:	Liquid
Concentration:	Lot specific
Buffer:	Liquid. Purified antibody supplied in 1x PBS buffer with 0.09 % (w/v) sodium azide and 2 % sucrose.

## Handling

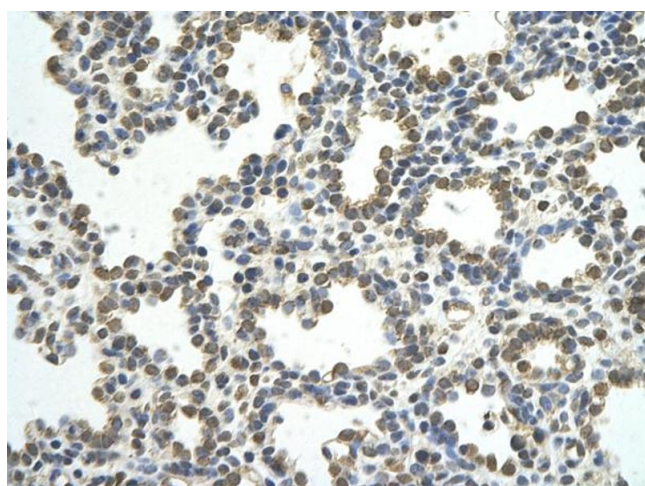
Preservative:	Sodium azide
Precaution of Use:	This product contains Sodium azide: a POISONOUS AND HAZARDOUS SUBSTANCE which should be handled by trained staff only.
Handling Advice:	Avoid repeated freeze-thaw cycles.
Storage:	-20 °C
Storage Comment:	For short term use, store at 2-8°C up to 1 week. For long term storage, store at -20°C in small aliquots to prevent freeze-thaw cycles.

## Images



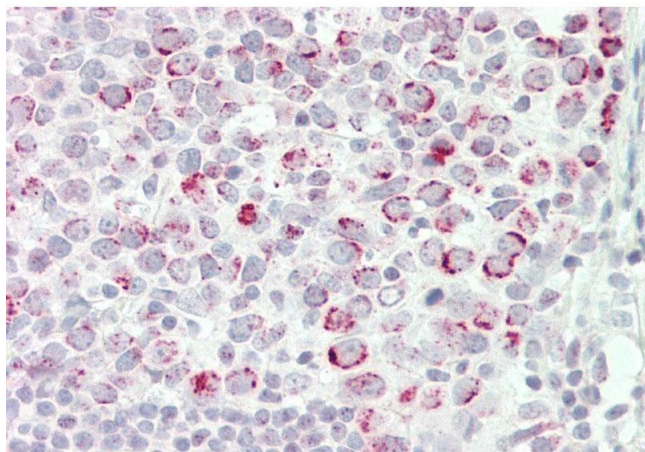
### Western Blotting

**Image 1.** WB Suggested Anti-CSTF2 Antibody Titration: 0.2-1 ug/ml ELISA Titer: 1:62500 Positive Control: 293T cell lysate CSTF2 is supported by BioGPS gene expression data to be expressed in HEK293T



### Immunohistochemistry

**Image 2.** Rabbit Anti-CSTF2 antibody Paraffin Embedded Tissue: Human Lung cell Cellular Data: alveolar cell Antibody Concentration: 4.0-8.0 ug/ml Magnification: 400X



#### Immunohistochemistry

**Image 3.** Rabbit Anti-CSTF2 antibody Formalin Fixed Paraffin Embedded Tissue: Human Tonsil Primary antibody Concentration: 1:100 Secondary Antibody: Donkey anti-Rabbit-Cy3 Secondary Antibody Concentration: 1:200 Magnification: 20x Exposure Time: 0.5-2.0sec

Please check the [product details page](#) for more images. Overall 4 images are available for ABIN2778764.