



[Go to Product page](#)

Datasheet for ABIN2778765  
**anti-CSTF2 antibody (N-Term)**

2 Images

### Overview

Quantity:	100 µL
Target:	CSTF2
Binding Specificity:	N-Term
Reactivity:	Human, Mouse, Rat, Cow, Dog, Rabbit, Guinea Pig, Zebrafish (Danio rerio), Pig, Horse
Host:	Rabbit
Clonality:	Polyclonal
Conjugate:	This CSTF2 antibody is un-conjugated
Application:	Western Blotting (WB)

### Product Details

Sequence:	MAGLPVRDPA VDRSLRSVFV GNIPYEATEE QLKDIFSEVG PVVSFRLVYD
Predicted Reactivity:	Cow: 100%, Dog: 100%, Guinea Pig: 93%, Horse: 93%, Human: 100%, Mouse: 93%, Pig: 100%, Rabbit: 100%, Rat: 100%, Zebrafish: 100%
Characteristics:	This is a rabbit polyclonal antibody against Cstf2. It was validated on Western Blot.
Purification:	Affinity Purified

### Target Details

Target:	CSTF2
Alternative Name:	Cstf2 ( <a href="#">CSTF2 Products</a> )
Background:	Cstf2 is one of the multiple factors required for polyadenylation and 3'-end cleavage of

## Target Details

---

mammalian pre-mRNAs. This subunit is directly involved in the binding to pre-mRNAs.

Alias Symbols: 64 kDa, C630034J23Rik, Cstf64

Protein Size: 580

---

Molecular Weight: 61 kDa

---

Gene ID: 108062

---

NCBI Accession: [NM\\_133196](#), [NP\\_573459](#)

---

UniProt: [Q8BIQ5](#)

---

## Application Details

---

Application Notes: Optimal working dilutions should be determined experimentally by the investigator.

---

Comment: Antigen size: 580 AA

---

Restrictions: For Research Use only

---

## Handling

---

Format: Liquid

---

Concentration: Lot specific

---

Buffer: Liquid. Purified antibody supplied in 1x PBS buffer with 0.09 % (w/v) sodium azide and 2 % sucrose.

---

Preservative: Sodium azide

---

Precaution of Use: This product contains Sodium azide: a POISONOUS AND HAZARDOUS SUBSTANCE which should be handled by trained staff only.

---

Handling Advice: Avoid repeated freeze-thaw cycles.

---

Storage: -20 °C

---

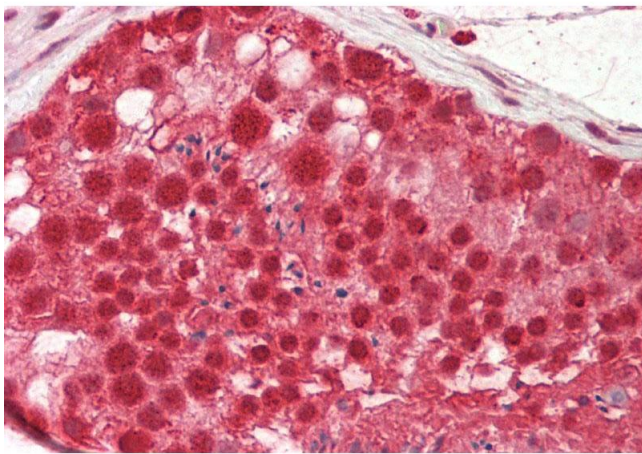
Storage Comment: For short term use, store at 2-8°C up to 1 week. For long term storage, store at -20°C in small aliquots to prevent freeze-thaw cycles.

---



### Western Blotting

**Image 1.** WB Suggested Anti-Cstf2 Antibody Titration: 1.0 ug/ml Positive Control: Mouse Pancreas



### Immunohistochemistry

**Image 2.** Rabbit Anti-Cstf2 antibody Formalin Fixed Paraffin Embedded Tissue: Human Testis Primary antibody Concentration: 1:100 Secondary Antibody: Donkey anti-Rabbit-Cy3 Secondary Antibody Concentration: 1:200 Magnification: 20x Exposure Time: 0.5-2.0sec