

Datasheet for ABIN2778774
anti-EIF4G2 antibody (N-Term)



[Go to Product page](#)

2 Images

Overview

Quantity:	100 µL
Target:	EIF4G2
Binding Specificity:	N-Term
Reactivity:	Human, Mouse, Rat, Cow, Rabbit, Dog, Horse, Guinea Pig
Host:	Rabbit
Clonality:	Polyclonal
Conjugate:	This EIF4G2 antibody is un-conjugated
Application:	Western Blotting (WB), Immunohistochemistry (IHC)

Product Details

Immunogen:	The immunogen is a synthetic peptide directed towards the N terminal region of human EIF4G2
Sequence:	PNFDGPAAEG QPGQKQSTTF RRLISKQLD EFENRTRNVD VYDKRENPLL
Predicted Reactivity:	Cow: 100%, Dog: 100%, Guinea Pig: 100%, Horse: 100%, Human: 100%, Mouse: 100%, Rabbit: 100%, Rat: 100%
Characteristics:	This is a rabbit polyclonal antibody against EIF4G2. It was validated on Western Blot using a cell lysate as a positive control.
Purification:	Affinity Purified

Target Details

Target:	EIF4G2
---------	--------

Target Details

Alternative Name: EIF4G2 ([EIF4G2 Products](#))

Background: Translation initiation is mediated by specific recognition of the cap structure by eukaryotic translation initiation factor 4F (eIF4F), which is a cap binding protein complex that consists of three subunits: eIF4A, eIF4E and eIF4G. EIF4G2 shares similarity with the C-terminal region of eIF4G that contains the binding sites for eIF4A and eIF3, eIF4G, in addition, contains a binding site for eIF4E at the N-terminus. Unlike eIF4G, which supports cap-dependent and independent translation, EIF4G2 functions as a general repressor of translation by forming translationally inactive complexes. Translation initiation is mediated by specific recognition of the cap structure by eukaryotic translation initiation factor 4F (eIF4F), which is a cap binding protein complex that consists of three subunits: eIF4A, eIF4E and eIF4G. The protein encoded by this gene shares similarity with the C-terminal region of eIF4G that contains the binding sites for eIF4A and eIF3, eIF4G, in addition, contains a binding site for eIF4E at the N-terminus. Unlike eIF4G, which supports cap-dependent and independent translation, this gene product functions as a general repressor of translation by forming translationally inactive complexes. In vitro and in vivo studies indicate that translation of this mRNA initiates exclusively at a non-AUG (GUG) codon. Alternatively spliced transcript variants encoding different isoforms of this gene have been described.

Alias Symbols: AAG1, DAP5, FLJ41344, NAT1, p97, P97

Protein Interaction Partner: SUMO2, UBC, SKIL, RPA2, ITGA4, FN1, Dlg4, POLDIP3, SLIRP, EIF4G3, RAB7A, EIF4H, EIF4G1, EIF4B, EIF4A1, DCUN1D1, EIF3F, MKNK1, EIF2S2, EIF3A, EIF5, EIF4A2, CASP3, NCBP1, EIF4E, MAGEA6,

Protein Size: 907

Molecular Weight: 102 kDa

Gene ID: 1982

NCBI Accession: [NM_001418](#), [NP_001409](#)

UniProt: [P78344](#)

Application Details

Application Notes: Optimal working dilutions should be determined experimentally by the investigator.

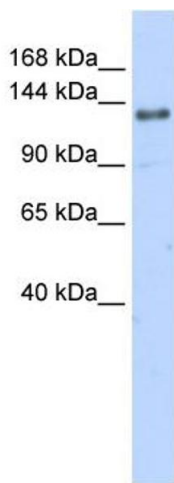
Comment: Antigen size: 907 AA

Restrictions: For Research Use only

Handling

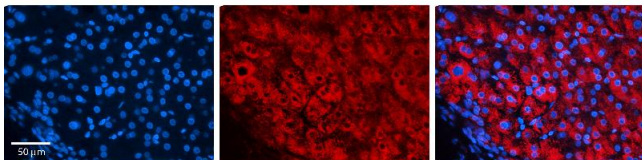
Format:	Liquid
Concentration:	Lot specific
Buffer:	Liquid. Purified antibody supplied in 1x PBS buffer with 0.09 % (w/v) sodium azide and 2 % sucrose.
Preservative:	Sodium azide
Precaution of Use:	This product contains Sodium azide: a POISONOUS AND HAZARDOUS SUBSTANCE which should be handled by trained staff only.
Handling Advice:	Avoid repeated freeze-thaw cycles.
Storage:	-20 °C
Storage Comment:	For short term use, store at 2-8°C up to 1 week. For long term storage, store at -20°C in small aliquots to prevent freeze-thaw cycles.

Images



Western Blotting

Image 1. WB Suggested Anti-EIF4G2 Antibody Titration: 0.2-1 ug/ml ELISA Titer: 1:312500 Positive Control: 721_B cell lysate EIF4G2 is strongly supported by BioGPS gene expression data to be expressed in Human 721_B cells



Immunohistochemistry

Image 2. Rabbit Anti-EIF4G2 Antibody Formalin Fixed Paraffin Embedded Tissue: Human Liver Tissue Observed Staining: Cytoplasm in hepatocytes Primary Antibody Concentration: 1:100 Other Working Concentrations: N/A Secondary Antibody: Donkey anti-Rabbit-Cy3 Secondary Antibody Concentration: 1:200 Magnification: 20X Exposure Time: 0.5 - 2.0 sec