

Datasheet for ABIN2778787

anti-GRSF1 antibody (N-Term)[Go to Product page](#)**1** Image

Overview

Quantity:	100 µL
Target:	GRSF1
Binding Specificity:	N-Term
Reactivity:	Human, Mouse, Rat, Cow, Pig
Host:	Rabbit
Clonality:	Polyclonal
Conjugate:	This GRSF1 antibody is un-conjugated
Application:	Western Blotting (WB)

Product Details

Immunogen:	The immunogen is a synthetic peptide directed towards the N terminal region of human GRSF1
Sequence:	SCRRTGAACL PFYSAASYPA LRASLLPQSL AAAAAVPTRS YSQESKTTYL
Predicted Reactivity:	Cow: 85%, Human: 100%, Mouse: 85%, Pig: 77%, Rat: 77%
Characteristics:	This is a rabbit polyclonal antibody against GRSF1. It was validated on Western Blot using a cell lysate as a positive control.
Purification:	Protein A purified

Target Details

Target:	GRSF1
Alternative Name:	GRSF1 (GRSF1 Products)

Target Details

Background:	<p>GRSF1 is a cellular protein that binds RNAs containing the G-rich element. Using indirect immunofluorescence microscopy this protein was found to be localized in the cytoplasm. The protein encoded by this gene is a cellular protein that binds RNAs containing the G-rich element. Using indirect immunofluorescence microscopy this protein was found to be localized in the cytoplasm. Several alternatively spliced transcript variants of this gene have been described, but the full-length nature of some of these variants has not been determined.</p> <p>Protein Interaction Partner: PSMD10, DAP3, TFAM, RPL28, NME4, MDH2, HSPA9, HADHA, HSD17B10, C1QBP, ATP5O, ATP5B, MRPL21, PNPT1, MRPL24, MRPS34, MRPL11, MRPS15, MRPS26, MRPS25, MRPL47, MRPS22, RNMTL1, MTPAP, PTC3, TRMT10C, MRPL48, MRPS2, MRPS7, MRPL4, MRPL2, MRPS28, ACOT9, HARS2, MRP</p> <p>Protein Size: 424</p>
Molecular Weight:	47 kDa
Gene ID:	2926
NCBI Accession:	NM_002092 , NP_002083
UniProt:	Q12849

Application Details

Application Notes:	Optimal working dilutions should be determined experimentally by the investigator.
Comment:	Antigen size: 424 AA
Restrictions:	For Research Use only

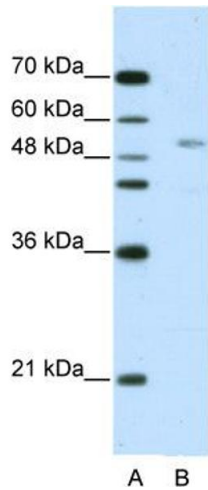
Handling

Format:	Liquid
Concentration:	Lot specific
Buffer:	Liquid. Purified antibody supplied in 1x PBS buffer with 0.09 % (w/v) sodium azide and 2 % sucrose.
Preservative:	Sodium azide
Precaution of Use:	This product contains Sodium azide: a POISONOUS AND HAZARDOUS SUBSTANCE which should be handled by trained staff only.
Handling Advice:	Avoid repeated freeze-thaw cycles.
Storage:	-20 °C

Handling

Storage Comment: For short term use, store at 2-8°C up to 1 week. For long term storage, store at -20°C in small aliquots to prevent freeze-thaw cycles.

Images



Western Blotting

Image 1. WB Suggested Anti-GRSF1 Antibody Titration: 2.5ug/ml ELISA Titer: 1:62500 Positive Control: HepG2 cell lysate