

Datasheet for ABIN2778788
anti-GRSF1 antibody (Middle Region)

11 Images

[Go to Product page](#)

Overview

Quantity:	100 µL
Target:	GRSF1
Binding Specificity:	Middle Region
Reactivity:	Human, Mouse, Rat, Cow, Dog, Horse, Rabbit, Guinea Pig
Host:	Rabbit
Clonality:	Polyclonal
Conjugate:	This GRSF1 antibody is un-conjugated
Application:	Western Blotting (WB)

Product Details

Immunogen:	The immunogen is a synthetic peptide directed towards the middle region of human GRSF1
Sequence:	IRNGENGIHF LLNRDGKRRG DALIEMESEQ DVQKALEKHR MYMGQRYVEV
Predicted Reactivity:	Cow: 100%, Dog: 100%, Guinea Pig: 100%, Horse: 100%, Human: 100%, Mouse: 100%, Rabbit: 100%, Rat: 100%
Characteristics:	This is a rabbit polyclonal antibody against GRSF1. It was validated on Western Blot using a cell lysate as a positive control.
Purification:	Affinity Purified

Target Details

Target:	GRSF1
---------	-------

Target Details

Alternative Name: GRSF1 ([GRSF1 Products](#))

Background: GRSF1 is a cellular protein that binds RNAs containing the G-rich element. Using indirect immunofluorescence microscopy this protein was found to be localized in the cytoplasm. The protein encoded by this gene is a cellular protein that binds RNAs containing the G-rich element. Using indirect immunofluorescence microscopy this protein was found to be localized in the cytoplasm. Several alternatively spliced transcript variants of this gene have been described, but the full-length nature of some of these variants has not been determined. The protein encoded by this gene is a cellular protein that binds RNAs containing the G-rich element. The protein is localized in the cytoplasm, and has been shown to stimulate translation of viral mRNAs in vitro. Multiple transcript variants encoding different isoforms have been found for this gene.

Alias Symbols: FLJ13125

Protein Interaction Partner: PSMD10, DAP3, TFAM, RPL28, NME4, MDH2, HSPA9, HADHA, HSD17B10, C1QBP, ATP50, ATP5B, MRPL21, PNPT1, MRPL24, MRPS34, MRPL11, MRPS15, MRPS26, MRPS25, MRPL47, MRPS22, RNMTL1, MTPAP, PTC3, TRMT10C, MRPL48, MRPS2, MRPS7, MRPL4, MRPL2, MRPS28, ACOT9, HARS2, MRP

Protein Size: 480

Molecular Weight: 53 kDa

Gene ID: 2926

NCBI Accession: [NM_002092](#), [NP_002083](#)

UniProt: [Q12849](#)

Application Details

Application Notes: Optimal working dilutions should be determined experimentally by the investigator.

Comment: Antigen size: 480 AA

Restrictions: For Research Use only

Handling

Format: Liquid

Concentration: Lot specific

Buffer: Liquid. Purified antibody supplied in 1x PBS buffer with 0.09 % (w/v) sodium azide and 2 % sucrose.

Handling

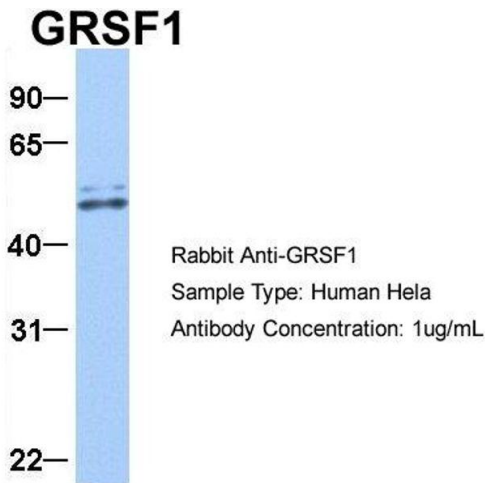
Preservative:	Sodium azide
Precaution of Use:	This product contains Sodium azide: a POISONOUS AND HAZARDOUS SUBSTANCE which should be handled by trained staff only.
Handling Advice:	Avoid repeated freeze-thaw cycles.
Storage:	-20 °C
Storage Comment:	For short term use, store at 2-8°C up to 1 week. For long term storage, store at -20°C in small aliquots to prevent freeze-thaw cycles.

Images



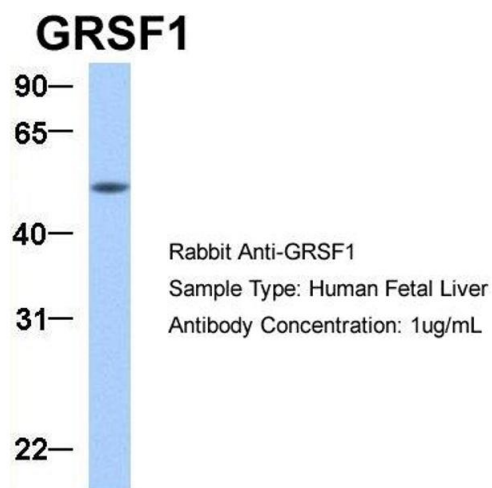
Western Blotting

Image 1. WB Suggested Anti-GRSF1 Antibody Titration: 0.2-1 ug/ml Positive Control: Hela cell lysate GRSF1 is strongly supported by BioGPS gene expression data to be expressed in Human HeLa cells



Western Blotting

Image 2. Host: Rabbit Target Name: GRSF1 Sample Type: Hela Antibody Dilution: 1.0ug/ml



Western Blotting

Image 3. Host: Rabbit Target Name: GRSF1 Sample Type:
Human Fetal Liver Antibody Dilution: 1.0ug/ml

Please check the [product details page](#) for more images. Overall 11 images are available for ABIN2778788.