



Datasheet for ABIN2778800
anti-NOVA2 antibody (Middle Region)



[Go to Product page](#)

1 Image

Overview

Quantity:	100 µL
Target:	NOVA2
Binding Specificity:	Middle Region
Reactivity:	Human, Mouse, Rat, Dog, Zebrafish (Danio rerio), Pig, Rabbit, Cow, Guinea Pig, Horse
Host:	Rabbit
Clonality:	Polyclonal
Conjugate:	This NOVA2 antibody is un-conjugated
Application:	Western Blotting (WB)

Product Details

Immunogen:	The immunogen is a synthetic peptide directed towards the middle region of human NOVA2
Sequence:	EPEQVHKAVS AIVQKVQEDP QSSSCLNISY ANVAGPVANS NPTGSPYASP
Predicted Reactivity:	Cow: 100%, Dog: 100%, Guinea Pig: 82%, Horse: 100%, Human: 100%, Mouse: 100%, Pig: 100%, Rabbit: 100%, Rat: 100%, Zebrafish: 92%
Characteristics:	This is a rabbit polyclonal antibody against NOVA2. It was validated on Western Blot using a cell lysate as a positive control.
Purification:	Protein A purified

Target Details

Target:	NOVA2
---------	-------

Target Details

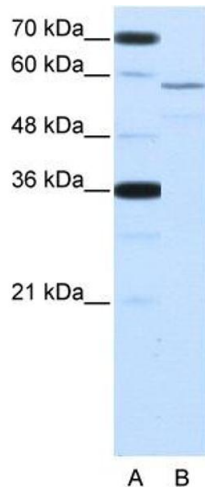
Alternative Name:	NOVA2 (NOVA2 Products)
Background:	NOVA2 may regulate RNA splicing or metabolism in a specific subset of developing neurons. It binds single strand RNA. Alias Symbols: ANOVA, NOVA3 Protein Size: 492
Molecular Weight:	54 kDa
Gene ID:	4858
NCBI Accession:	NM_002516 , NP_002507
UniProt:	Q9UNW9

Application Details

Application Notes:	Optimal working dilutions should be determined experimentally by the investigator.
Comment:	Antigen size: 492 AA
Restrictions:	For Research Use only

Handling

Format:	Liquid
Concentration:	Lot specific
Buffer:	Liquid. Purified antibody supplied in 1x PBS buffer with 0.09 % (w/v) sodium azide and 2 % sucrose.
Preservative:	Sodium azide
Precaution of Use:	This product contains Sodium azide: a POISONOUS AND HAZARDOUS SUBSTANCE which should be handled by trained staff only.
Handling Advice:	Avoid repeated freeze-thaw cycles.
Storage:	-20 °C
Storage Comment:	For short term use, store at 2-8°C up to 1 week. For long term storage, store at -20°C in small aliquots to prevent freeze-thaw cycles.



Western Blotting

Image 1. WB Suggested Anti-NOVA2 Antibody Titration:
2.5ug/ml Positive Control: HepG2 cell lysate