



[Go to Product page](#)

Datasheet for ABIN2778802

## anti-OAS1G antibody (N-Term)

### 1 Image

#### Overview

Quantity:	100 µL
Target:	OAS1G
Binding Specificity:	N-Term
Reactivity:	Pig, Cow, Dog, Horse, Human, Mouse, Guinea Pig, Rabbit, Rat
Host:	Rabbit
Clonality:	Polyclonal
Conjugate:	This OAS1G antibody is un-conjugated
Application:	Western Blotting (WB)

#### Product Details

Sequence:	VKGGSSGKGT TLKGRSDADL VVFLNNLTSF EDQLNRRGEF IKEIKKQLYE
Predicted Reactivity:	Cow: 100%, Dog: 100%, Guinea Pig: 86%, Horse: 100%, Human: 100%, Mouse: 100%, Pig: 100%, Rabbit: 86%, Rat: 100%
Characteristics:	This is a rabbit polyclonal antibody against Oas1g. It was validated on Western Blot.
Purification:	Affinity Purified

#### Target Details

Target:	OAS1G
Alternative Name:	Oas1g ( <a href="#">OAS1G Products</a> )
Background:	The function of this protein remains unknown.

## Target Details

---

Alias Symbols: AI449562, L2, Mmu-L, Mmu-L2, Oas1a, Oias-1, Oias1

Protein Size: 367

---

Molecular Weight: 42 kDa

---

Gene ID: 23960

---

NCBI Accession: [NM\\_011852](#), [NP\\_035982](#)

---

UniProt: [Q8K469](#)

## Application Details

---

Application Notes: Optimal working dilutions should be determined experimentally by the investigator.

---

Comment: Antigen size: 367 AA

---

Restrictions: For Research Use only

## Handling

---

Format: Liquid

---

Concentration: Lot specific

---

Buffer: Liquid. Purified antibody supplied in 1x PBS buffer with 0.09 % (w/v) sodium azide and 2 % sucrose.

---

Preservative: Sodium azide

---

Precaution of Use: This product contains Sodium azide: a POISONOUS AND HAZARDOUS SUBSTANCE which should be handled by trained staff only.

---

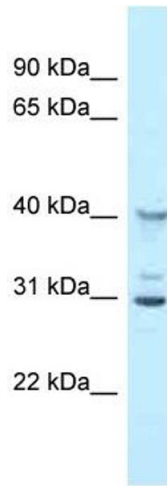
Handling Advice: Avoid repeated freeze-thaw cycles.

---

Storage: -20 °C

---

Storage Comment: For short term use, store at 2-8°C up to 1 week. For long term storage, store at -20°C in small aliquots to prevent freeze-thaw cycles.



### Western Blotting

**Image 1.** WB Suggested Anti-Oas1g Antibody Titration: 1.0 ug/ml Positive Control: Mouse Liver