



Datasheet for ABIN2778807  
**anti-PPP1R10 antibody (N-Term)**



[Go to Product page](#)

3 Images

Overview

Quantity:	100 µL
Target:	PPP1R10
Binding Specificity:	N-Term
Reactivity:	Human, Rat, Mouse, Cow, Dog, Guinea Pig, Horse, Pig, Rabbit
Host:	Rabbit
Clonality:	Polyclonal
Conjugate:	This PPP1R10 antibody is un-conjugated
Application:	Western Blotting (WB), Immunofluorescence (IF)

Product Details

Immunogen:	The immunogen is a synthetic peptide directed towards the N terminal region of human PPP1R10
Sequence:	SQSSTQPAEK DKKKRKDEGK SRTTLPERPL TEVKAETRAE EAPEKKREKP
Predicted Reactivity:	Cow: 100%, Dog: 100%, Guinea Pig: 79%, Horse: 92%, Human: 100%, Mouse: 100%, Pig: 100%, Rabbit: 92%, Rat: 100%
Characteristics:	This is a rabbit polyclonal antibody against PPP1R10. It was validated on Western Blot using a cell lysate as a positive control.
Purification:	Affinity Purified

Target Details

Target:	PPP1R10
---------	---------

## Target Details

---

Alternative Name:	PPP1R10 ( <a href="#">PPP1R10 Products</a> )
Background:	<p>PPP1R10 is a protein with similarity to a rat protein that has an inhibitory effect on protein phosphatase-1 (PP1). The rat protein localizes to the nucleus and colocalizes with chromatin at distinct phases during mitosis. This gene encodes a protein with similarity to a rat protein that has an inhibitory effect on protein phosphatase-1 (PP1). The rat protein localizes to the nucleus and colocalizes with chromatin at distinct phases during mitosis. This gene lies within the major histocompatibility complex class I region on chromosome 6. Publication Note: This RefSeq record includes a subset of the publications that are available for this gene. Please see the Entrez Gene record to access additional publications.</p> <p>Alias Symbols: CAT53, FB19, PNUTS, PP1R10</p> <p>Protein Interaction Partner: HUWE1, NEDD8, SUMO1, UBC, RPA3, RPA2, RPA1, MPG, MMS19, PRKACA, PPP1CA, HNRNPK, LSM5, ABCF2, SUMO3, ISG15, Cep72, Ppp1r10, WDR82, TOX4, PPP1CC, PPP1CB, HSPA4,</p> <p>Protein Size: 940</p>
Molecular Weight:	99 kDa
Gene ID:	5514
NCBI Accession:	<a href="#">NM_002714</a> , <a href="#">NP_002705</a>
UniProt:	<a href="#">Q96QC0</a>
Pathways:	<a href="#">Protein targeting to Nucleus</a>

## Application Details

---

Application Notes:	Optimal working dilutions should be determined experimentally by the investigator.
Comment:	Antigen size: 940 AA
Restrictions:	For Research Use only

## Handling

---

Format:	Liquid
Concentration:	Lot specific
Buffer:	Liquid. Purified antibody supplied in 1x PBS buffer with 0.09 % (w/v) sodium azide and 2 % sucrose.
Preservative:	Sodium azide

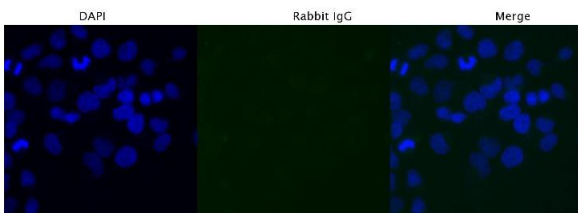
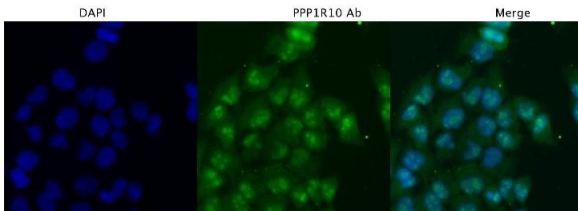
## Handling

Precaution of Use:	This product contains Sodium azide: a POISONOUS AND HAZARDOUS SUBSTANCE which should be handled by trained staff only.
Handling Advice:	Avoid repeated freeze-thaw cycles.
Storage:	-20 °C
Storage Comment:	For short term use, store at 2-8°C up to 1 week. For long term storage, store at -20°C in small aliquots to prevent freeze-thaw cycles.

## Images



PPP1R10 in HeLa Cells



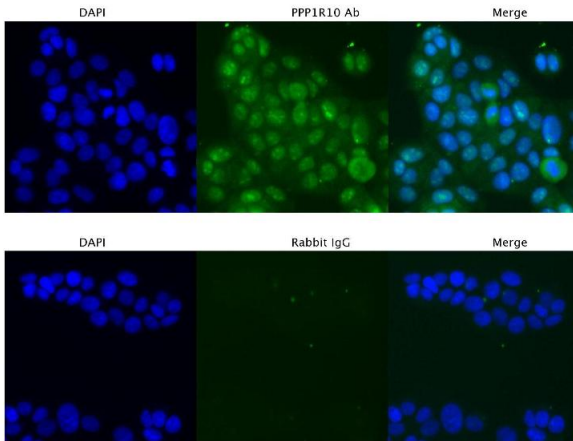
### Western Blotting

**Image 1.** WB Suggested Anti-PPP1R10 Antibody Titration: 0.2-1 ug/ml Positive Control: HeLa cell lysate PPP1R10 is strongly supported by BioGPS gene expression data to be expressed in Human HeLa cells

### Immunofluorescence

**Image 2.** Sample Type : HeLa Primary Antibody Dilution: 4 ug/ml Secondary Antibody : Anti-rabbit Alexa 546 Secondary Antibody Dilution: 2 ug/ml Gene Name : PPP1R10

PPP1R10 in MCF7 Cells



Immunofluorescence

**Image 3.** Sample Type : MCF7 Primary Antibody Dilution: 4 ug/ml Secondary Antibody : Anti-rabbit Alexa 546 Secondary Antibody Dilution: 2 ug/ml Gene Name : PPP1R10