

Datasheet for ABIN2778812
anti-PSMA6 antibody (N-Term)[Go to Product page](#)

3 Images

Overview

Quantity:	100 µL
Target:	PSMA6
Binding Specificity:	N-Term
Reactivity:	Human, Mouse, Rat, Dog, Rabbit, Cow, Goat, Guinea Pig, Horse, Sheep, Zebrafish (Danio rerio), Saccharomyces cerevisiae
Host:	Rabbit
Clonality:	Polyclonal
Conjugate:	This PSMA6 antibody is un-conjugated
Application:	Western Blotting (WB)

Product Details

Immunogen:	The immunogen is a synthetic peptide directed towards the N terminal region of human PSMA6
Sequence:	EYAFKAINQG GLTSVAVRGK DCAVIVTQKK VPDKLLDSST VTHLFKITEN
Predicted Reactivity:	Cow: 100%, Dog: 100%, Goat: 100%, Guinea Pig: 100%, Horse: 100%, Human: 100%, Mouse: 100%, Rabbit: 100%, Rat: 100%, Sheep: 100%, Yeast: 100%, Zebrafish: 100%
Characteristics:	This is a rabbit polyclonal antibody against PSMA6. It was validated on Western Blot using a cell lysate as a positive control.
Purification:	Affinity Purified

Target Details

Target:	PSMA6
---------	-------

Target Details

Alternative Name:	PSMA6 (PSMA6 Products)
Background:	<p>The proteasome is a multicatalytic proteinase complex with a highly ordered ring-shaped 20S core structure. The core structure is composed of 4 rings of 28 non-identical subunits, 2 rings are composed of 7 alpha subunits and 2 rings are composed of 7 beta subunits. Proteasomes are distributed throughout eukaryotic cells at a high concentration and cleave peptides in an ATP/ubiquitin-dependent process in a non-lysosomal pathway. An essential function of a modified proteasome, the immunoproteasome, is the processing of class I MHC peptides. PSMA6 is a member of the peptidase T1A family, which is a 20S core alpha subunit. The proteasome is a multicatalytic proteinase complex with a highly ordered ring-shaped 20S core structure. The core structure is composed of 4 rings of 28 non-identical subunits, 2 rings are composed of 7 alpha subunits and 2 rings are composed of 7 beta subunits. Proteasomes are distributed throughout eukaryotic cells at a high concentration and cleave peptides in an ATP/ubiquitin-dependent process in a non-lysosomal pathway. An essential function of a modified proteasome, the immunoproteasome, is the processing of class I MHC peptides. This gene encodes a member of the peptidase T1A family, that is a 20S core alpha subunit. A pseudogene has been identified on the Y chromosome. Publication Note: This RefSeq record includes a subset of the publications that are available for this gene. Please see the Entrez Gene record to access additional publications.</p> <p>Alias Symbols: IOTA, MGC22756, MGC2333, MGC23846, PROS27, p27K</p> <p>Protein Interaction Partner: UBC, RNF170, LIMD2, C19orf57, TRIM39, ZBTB44, CADM1, HUWE1, PSMA3, RTP5, KRTAP4-2, AURKA, PSMD14, MDM2, PSMA5, PSMG3, PSMG2, PSMG1, RNF2, PSMB8, PSMB7, PSMB6, PSMB5, PSMB4, PSMB3, PSMB2, PSMB1, PSMA7, PSMA4, PSMA1, HNRNPA2B1, PYCRL, RPP38, RPP30, CAST, PS</p> <p>Protein Size: 246</p>
Molecular Weight:	27 kDa
Gene ID:	5687
NCBI Accession:	NM_002791 , NP_002782
UniProt:	P60900
Pathways:	Mitotic G1-G1/S Phases , DNA Replication , Synthesis of DNA

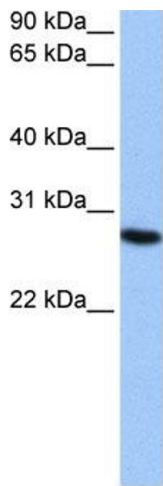
Application Details

Application Notes:	Optimal working dilutions should be determined experimentally by the investigator.
Comment:	Antigen size: 246 AA

Application Details

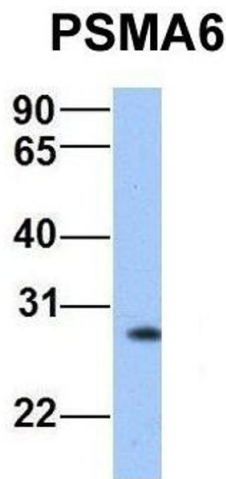
Restrictions:	For Research Use only
Handling	
Format:	Liquid
Concentration:	Lot specific
Buffer:	Liquid. Purified antibody supplied in 1x PBS buffer with 0.09 % (w/v) sodium azide and 2 % sucrose.
Preservative:	Sodium azide
Precaution of Use:	This product contains Sodium azide: a POISONOUS AND HAZARDOUS SUBSTANCE which should be handled by trained staff only.
Handling Advice:	Avoid repeated freeze-thaw cycles.
Storage:	-20 °C
Storage Comment:	For short term use, store at 2-8°C up to 1 week. For long term storage, store at -20°C in small aliquots to prevent freeze-thaw cycles.

Images



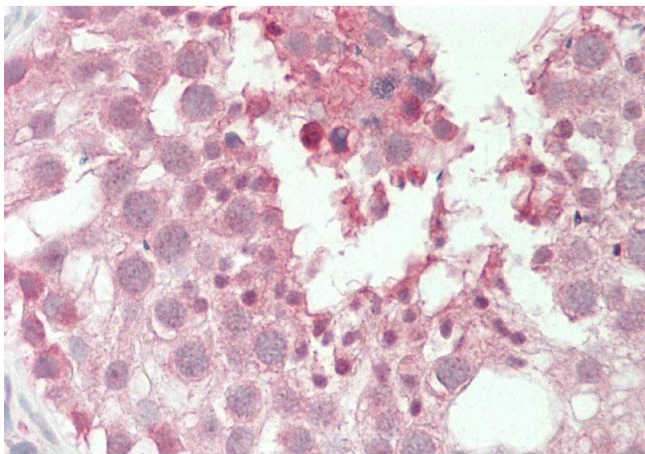
Western Blotting

Image 1. WB Suggested Anti-PSMA6 Antibody Titration: 0.2-1 ug/ml Positive Control: Jurkat cell lysate



Western Blotting

Image 2. Host: Rabbit Target Name: PSMA6 Sample Type: Human HeLa Antibody Dilution: 1.0ug/ml PSMA6 is supported by BioGPS gene expression data to be expressed in HeLa



Immunohistochemistry

Image 3. Rabbit Anti-PSMA6 antibody Formalin Fixed Paraffin Embedded Tissue: Human Testis Primary antibody Concentration: 1:100 Secondary Antibody: Donkey anti-Rabbit-Cy3 Secondary Antibody Concentration: 1:200 Magnification: 20x Exposure Time: 0.5-2.0sec