

Datasheet for ABIN2778817
anti-RBM4 antibody (Middle Region)

2 Images

[Go to Product page](#)

Overview

Quantity:	100 µL
Target:	RBM4
Binding Specificity:	Middle Region
Reactivity:	Human, Mouse, Rat, Guinea Pig, Horse, Rabbit, Cow, Dog, Goat
Host:	Rabbit
Clonality:	Polyclonal
Conjugate:	This RBM4 antibody is un-conjugated
Application:	Western Blotting (WB)

Product Details

Immunogen:	The immunogen is a synthetic peptide directed towards the middle region of human RBM4
Sequence:	TAPGMGDQSG CYRCGKEGHW SKECPIDRSG RVADLTEQYN EQYGAVRTPY
Predicted Reactivity:	Cow: 93%, Dog: 93%, Goat: 93%, Guinea Pig: 100%, Horse: 93%, Human: 100%, Mouse: 100%, Rabbit: 100%, Rat: 100%
Characteristics:	This is a rabbit polyclonal antibody against RBM4. It was validated on Western Blot using a cell lysate as a positive control.
Purification:	Affinity Purified

Target Details

Target:	RBM4
---------	------

Target Details

Alternative Name:	RBM4 (RBM4 Products)
Background:	<p>RBM4 contains 1 CCHC-type zinc finger and 2 RRM (RNA recognition motif) domains. It may play a role in alternative splice site selection during pre-mRNA processing. RBM4 is down-regulated in fetal Down syndrome (DS) brain.</p> <p>Alias Symbols: DKFZp547K0918, LARK, MGC75138, RBM4A, ZCCHC21, ZCRB3A</p> <p>Protein Interaction Partner: UBC, RPA3, RPA2, RPA1, SUZ12, EED, SOX2, RBM23, PABPC1, PRPF31, U2AF2, HNRNPUL1, DDX17, SF3B4, RBM7, AQR, RBM10, DGCR14, SF1, VCAM1, SNRPC, HNRNPM, SMAD5, ITGA4, HNRNPK, HNRNPH3, HNRNPH2, HNRNPF, FN1, DHX9, DDX5, RBM42, CXorf56, PTBP2, RBM22, TMEM189, STR</p> <p>Protein Size: 364</p>
Molecular Weight:	40 kDa
Gene ID:	5936
NCBI Accession:	NM_002896 , NP_002887
UniProt:	Q96LT9
Pathways:	Regulation of Muscle Cell Differentiation , Photoperiodism

Application Details

Application Notes:	Optimal working dilutions should be determined experimentally by the investigator.
Comment:	Antigen size: 364 AA
Restrictions:	For Research Use only

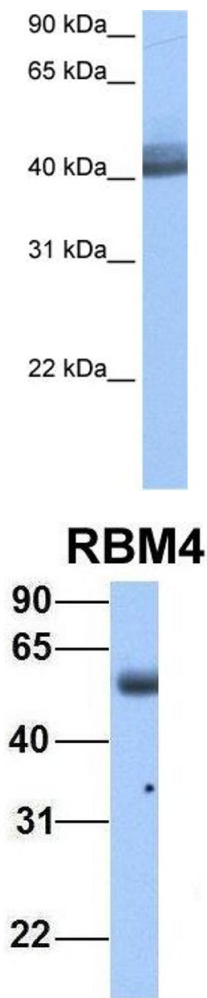
Handling

Format:	Liquid
Concentration:	Lot specific
Buffer:	Liquid. Purified antibody supplied in 1x PBS buffer with 0.09 % (w/v) sodium azide and 2 % sucrose.
Preservative:	Sodium azide
Precaution of Use:	This product contains Sodium azide: a POISONOUS AND HAZARDOUS SUBSTANCE which should be handled by trained staff only.
Handling Advice:	Avoid repeated freeze-thaw cycles.

Handling

Storage:	-20 °C
Storage Comment:	For short term use, store at 2-8°C up to 1 week. For long term storage, store at -20°C in small aliquots to prevent freeze-thaw cycles.

Images



Western Blotting

Image 1. WB Suggested Anti-RBM4 Antibody Titration: 0.2-1 ug/ml Positive Control: MCF7 cell lysate RBM4 is strongly supported by BioGPS gene expression data to be expressed in Human MCF7 cells

Western Blotting

Image 2. Host: Rabbit Target Name: RBM4 Sample Type: Human Adult Placenta Antibody Dilution: 1.0ug/ml