



Datasheet for ABIN2778818
anti-RBMS1 antibody (C-Term)



[Go to Product page](#)

2 Images

Overview

Quantity:	100 µL
Target:	RBMS1
Binding Specificity:	C-Term
Reactivity:	Human, Mouse, Rat, Dog, Guinea Pig, Horse, Rabbit, Cow, Goat
Host:	Rabbit
Clonality:	Polyclonal
Conjugate:	This RBMS1 antibody is un-conjugated
Application:	Western Blotting (WB), Immunohistochemistry (IHC)

Product Details

Immunogen:	The immunogen is a synthetic peptide directed towards the C terminal region of human RBMS1
Sequence:	TYMPATSAMQ GAYLPQYAHM QTTAVPVVEEA SGQQQVAVET SNDHSPYTFQ
Predicted Reactivity:	Cow: 93%, Dog: 100%, Goat: 93%, Guinea Pig: 100%, Horse: 100%, Human: 100%, Mouse: 100%, Rabbit: 100%, Rat: 100%
Characteristics:	This is a rabbit polyclonal antibody against RBMS1. It was validated on Western Blot and immunohistochemistry.
Purification:	Protein A purified

Target Details

Target:	RBMS1
---------	-------

Target Details

Alternative Name: RBMS1 ([RBMS1 Products](#))

Background: RBMS1 is a member of a small family of proteins which bind single stranded DNA/RNA. These proteins are characterized by the presence of two sets of ribonucleoprotein consensus sequence (RNP-CS) that contain conserved motifs, RNP1 and RNP2, originally described in RNA binding proteins, and required for DNA binding. These proteins have been implicated in such diverse functions as DNA replication, gene transcription, cell cycle progression and apoptosis. This gene encodes a member of a small family of proteins which bind single stranded DNA/RNA. These proteins are characterized by the presence of two sets of ribonucleoprotein consensus sequence (RNP-CS) that contain conserved motifs, RNP1 and RNP2, originally described in RNA binding proteins, and required for DNA binding. These proteins have been implicated in such diverse functions as DNA replication, gene transcription, cell cycle progression and apoptosis. Multiple transcript variants, resulting from alternative splicing and encoding different isoforms, have been described. Several of these were isolated by virtue of their binding to either strand of an upstream element of c-myc (MSSPs), or by phenotypic complementation of cdc2 and cdc13 mutants of yeast (scr2), or as a potential human repressor of HIV-1 and ILR-2 alpha promoter transcription (YC1). A pseudogene for this locus is found on chromosome 12.

Alias Symbols: YC1, MSSP, SCR2, HCC-4, MSSP-1, MSSP-2, MSSP-3, C2orf12

Protein Interaction Partner: TFCEP2, UBC, MRPL53, MRRF, SARNP, NABP2, SRPRB, SUGP1, SBDS, UBQLN1, TIMM44, HRSP12, PPIF, PQBP1, ZC3H11A, SNX3, STX7, UBE2I, SNRPC, SCP2, RRBP1, RPS19, RPL38, RFX5, PPIB, NDUFA7, DNM2, GRK5, POLA1,

Protein Size: 403

Molecular Weight: 44 kDa

Gene ID: 5937

NCBI Accession: [NM_002897](#), [NP_002888](#)

Application Details

Application Notes: Optimal working dilutions should be determined experimentally by the investigator.

Comment: Antigen size: 403 AA

Restrictions: For Research Use only

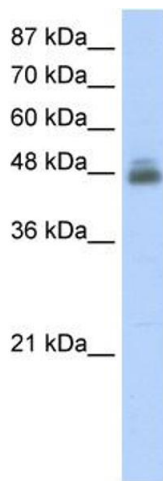
Handling

Format: Liquid

Handling

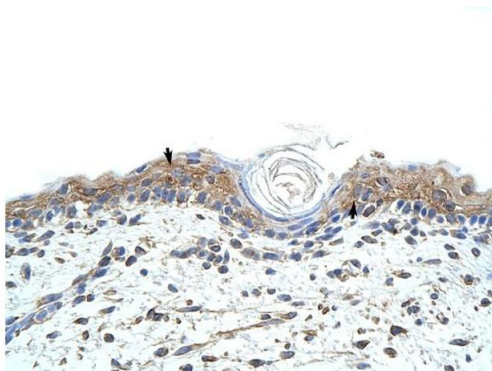
Concentration:	Lot specific
Buffer:	Liquid. Purified antibody supplied in 1x PBS buffer with 0.09 % (w/v) sodium azide and 2 % sucrose.
Preservative:	Sodium azide
Precaution of Use:	This product contains Sodium azide: a POISONOUS AND HAZARDOUS SUBSTANCE which should be handled by trained staff only.
Handling Advice:	Avoid repeated freeze-thaw cycles.
Storage:	-20 °C
Storage Comment:	For short term use, store at 2-8°C up to 1 week. For long term storage, store at -20°C in small aliquots to prevent freeze-thaw cycles.

Images



Western Blotting

Image 1. WB Suggested Anti-RBMS1 Antibody Titration:
2.5ug/ml Positive Control: Jurkat cell lysate



Rabbit Anti-RBMS1 Antibody
Catalog Number: ARP40427
Lot Number: QC10304
Paraffin Embedded Tissue: Human Skin
Cells with Positive label: Squamous epithelial cells (Indicated with Arrows)
Antibody Concentration: 4.0-8.0 µg/ml
Magnification: 400X

Immunohistochemistry

Image 2. Rabbit Anti-RBMS1 Antibody Paraffin Embedded
Tissue: Human Skin Cellular Data: Squamous epithelial cells
Antibody Concentration: 4.0-8.0 ug/ml Magnification: 400X