

Datasheet for ABIN2778822
anti-RDBP antibody (N-Term)[Go to Product page](#)**1** Image**1** Publication

Overview

Quantity:	100 µL
Target:	RDBP
Binding Specificity:	N-Term
Reactivity:	Human, Mouse, Rat, Cow, Horse, Guinea Pig, Rabbit, Saccharomyces cerevisiae
Host:	Rabbit
Clonality:	Polyclonal
Conjugate:	This RDBP antibody is un-conjugated
Application:	Western Blotting (WB)

Product Details

Immunogen:	The immunogen is a synthetic peptide directed towards the N terminal region of human RDBP
Sequence:	LVIPPGLSEE EEALQKKFNK LKKKKKALLA LKKQSSSSTT SQGGVKRSLS
Predicted Reactivity:	Cow: 100%, Guinea Pig: 100%, Horse: 100%, Human: 100%, Mouse: 100%, Rabbit: 100%, Rat: 100%, Yeast: 83%
Characteristics:	This is a rabbit polyclonal antibody against RDBP. It was validated on Western Blot using a cell lysate as a positive control.
Purification:	Affinity Purified

Target Details

Target:	RDBP
---------	------

Target Details

Alternative Name:	RDBP (RDBP Products)
Background:	<p>RDBP is part of a complex termed negative elongation factor (NELF) which represses RNA polymerase II transcript elongation. This protein bears similarity to nuclear RNA-binding proteins, however, it has not been demonstrated that this protein binds RNA. The protein contains a tract of alternating basic and acidic residues, largely arginine (R) and aspartic acid (D). The protein encoded by this gene is part of a complex termed negative elongation factor (NELF) which represses RNA polymerase II transcript elongation. This protein bears similarity to nuclear RNA-binding proteins, however, it has not been demonstrated that this protein binds RNA. The protein contains a tract of alternating basic and acidic residues, largely arginine (R) and aspartic acid (D). The gene localizes to the major histocompatibility complex (MHC) class III region on chromosome 6. Publication Note: This RefSeq record includes a subset of the publications that are available for this gene. Please see the Entrez Gene record to access additional publications.</p> <p>Alias Symbols: D6S45, NELF-E, RD, RDP, RDBP</p> <p>Protein Interaction Partner: CCDC57, MTUS2, TRIM27, UBC, SRPK2, SRPK1, LMNA, POLR2C, SUMO1, NELFCD, NELFB, SF3B1, NELFA, TMEM141, RPAP2, WDR48, VAMP3, NCOR1, NELFE, POLR2A, CACTIN,</p> <p>Protein Size: 380</p>
Molecular Weight:	43 kDa
Gene ID:	7936
NCBI Accession:	NM_002904 , NP_002895
UniProt:	P18615

Application Details

Application Notes:	Optimal working dilutions should be determined experimentally by the investigator.
Comment:	Antigen size: 380 AA
Restrictions:	For Research Use only

Handling

Format:	Liquid
Concentration:	Lot specific
Buffer:	Liquid. Purified antibody supplied in 1x PBS buffer with 0.09 % (w/v) sodium azide and 2 %

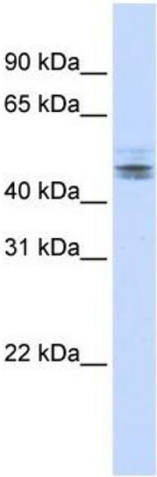
Handling

	sucrose.
Preservative:	Sodium azide
Precaution of Use:	This product contains Sodium azide: a POISONOUS AND HAZARDOUS SUBSTANCE which should be handled by trained staff only.
Handling Advice:	Avoid repeated freeze-thaw cycles.
Storage:	-20 °C
Storage Comment:	For short term use, store at 2-8°C up to 1 week. For long term storage, store at -20°C in small aliquots to prevent freeze-thaw cycles.

Publications

Product cited in:	van Dijk, Schilders, Pruijn: "Human cell growth requires a functional cytoplasmic exosome, which is involved in various mRNA decay pathways." in: RNA (New York, N.Y.) , Vol. 13, Issue 7, pp. 1027-35, (2007) (PubMed).
-------------------	---

Images



Western Blotting

Image 1. WB Suggested Anti-RDBP Antibody Titration: 0.2-1 ug/ml ELISA Titer: 1:62500 Positive Control: Human brain