



[Go to Product page](#)

Datasheet for ABIN2778825

anti-Ribonuclease H1 antibody (Middle Region)

3 Images

Overview

Quantity:	100 µL
Target:	Ribonuclease H1 (RNASEH1)
Binding Specificity:	Middle Region
Reactivity:	Human, Mouse, Rat, Cow, Dog, Horse, Rabbit, Guinea Pig, Pig, Saccharomyces cerevisiae, Zebrafish (Danio rerio)
Host:	Rabbit
Clonality:	Polyclonal
Conjugate:	This Ribonuclease H1 antibody is un-conjugated
Application:	Western Blotting (WB)

Product Details

Immunogen:	The immunogen is a synthetic peptide directed towards the middle region of human RNASEH1
Sequence:	EVINKEDFVA LERLTQGMDI QWMHVPGHSG FIGNEEADRL AREGAKQSED
Predicted Reactivity:	Cow: 100%, Dog: 100%, Guinea Pig: 93%, Horse: 100%, Human: 100%, Mouse: 100%, Pig: 100%, Rabbit: 100%, Rat: 100%, Yeast: 100%, Zebrafish: 92%
Characteristics:	This is a rabbit polyclonal antibody against RNASEH1. It was validated on Western Blot using a cell lysate as a positive control.
Purification:	Affinity Purified

Target Details

Target:	Ribonuclease H1 (RNASEH1)
---------	---------------------------

Target Details

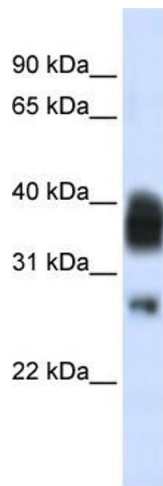
Alternative Name:	RNASEH1 (RNASEH1 Products)
Background:	<p>RNASEH1 belongs to the RNase H family. It contains 1 RNase H domain. RNASEH1 is an endonuclease that specifically degrades the RNA of RNA-DNA hybrids.</p> <p>Alias Symbols: H1RNA, RNH1</p> <p>Protein Interaction Partner: RPA3, RPA2, RPA1, TM9SF1, ELAVL1,</p> <p>Protein Size: 286</p>
Molecular Weight:	32 kDa
Gene ID:	246243
NCBI Accession:	NM_002936 , NP_002927
UniProt:	O60930

Application Details

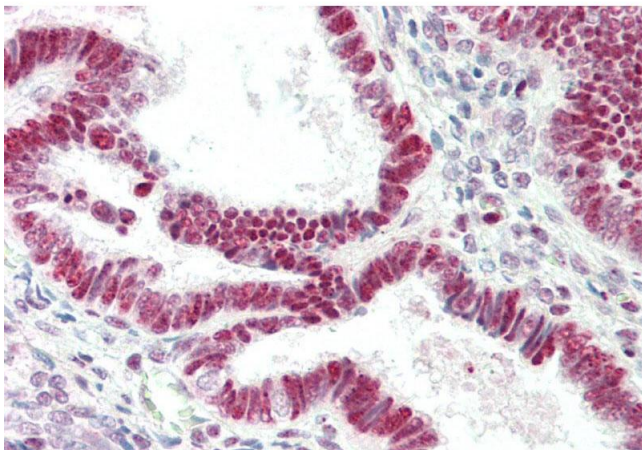
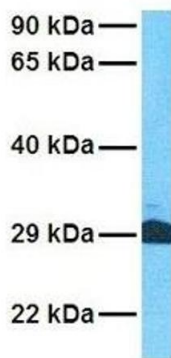
Application Notes:	Optimal working dilutions should be determined experimentally by the investigator.
Comment:	Antigen size: 286 AA
Restrictions:	For Research Use only

Handling

Format:	Liquid
Concentration:	Lot specific
Buffer:	Liquid. Purified antibody supplied in 1x PBS buffer with 0.09 % (w/v) sodium azide and 2 % sucrose.
Preservative:	Sodium azide
Precaution of Use:	This product contains Sodium azide: a POISONOUS AND HAZARDOUS SUBSTANCE which should be handled by trained staff only.
Handling Advice:	Avoid repeated freeze-thaw cycles.
Storage:	-20 °C
Storage Comment:	For short term use, store at 2-8°C up to 1 week. For long term storage, store at -20°C in small aliquots to prevent freeze-thaw cycles.



RNASEH1



Western Blotting

Image 1. WB Suggested Anti-RNASEH1 Antibody Titration: 0.2-1 ug/ml ELISA Titer: 1:62500 Positive Control: Jurkat cell lysate RNASEH1 is strongly supported by BioGPS gene expression data to be expressed in Human Jurkat cells

Western Blotting

Image 2. Host: Rabbit Target Name: RNASEH1 Sample Tissue: Human Jurkat Antibody Dilution: 1.0ug/ml

Immunohistochemistry

Image 3. Rabbit Anti-RNASEH1 antibody Formalin Fixed Paraffin Embedded Tissue: Human Uterus Primary antibody Concentration: 1:100 Secondary Antibody: Donkey anti-Rabbit-Cy3 Secondary Antibody Concentration: 1:200 Magnification: 20x Exposure Time: 0.5-2.0sec