

Datasheet for ABIN2778827  
**anti-RPN1 antibody (Middle Region)**[Go to Product page](#)

4 Images

1 Publication

## Overview

Quantity:	100 µL
Target:	RPN1
Binding Specificity:	Middle Region
Reactivity:	Human, Mouse, Rat, Dog, Cow, Horse, Rabbit, Guinea Pig, Zebrafish (Danio rerio)
Host:	Rabbit
Clonality:	Polyclonal
Conjugate:	This RPN1 antibody is un-conjugated
Application:	Western Blotting (WB)

## Product Details

Immunogen:	The immunogen is a synthetic peptide directed towards the middle region of human RPN1
Sequence:	AAEARMKVAC ITEQVLTLVN KRIGLYRHFD ETVNRYKQSR DISTLNSGKK
Predicted Reactivity:	Cow: 93%, Dog: 86%, Guinea Pig: 93%, Horse: 93%, Human: 100%, Mouse: 100%, Rabbit: 86%, Rat: 100%, Zebrafish: 92%
Characteristics:	This is a rabbit polyclonal antibody against RPN1. It was validated on Western Blot using a cell lysate as a positive control.
Purification:	Affinity Purified

## Target Details

Target:	RPN1
---------	------

## Target Details

Alternative Name:	RPN1 ( <a href="#">RPN1 Products</a> )
Background:	<p>This protein is a type I integral membrane protein found only in the rough endoplasmic reticulum. The encoded protein is part of an N-oligosaccharyl transferase complex that links high mannose oligosaccharides to asparagine residues found in the Asn-X-Ser/Thr consensus motif of nascent polypeptide chains. This protein forms part of the regulatory subunit of the 26S proteasome and may mediate binding of ubiquitin-like domains to this proteasome. This gene encodes a type I integral membrane protein found only in the rough endoplasmic reticulum. The encoded protein is part of an N-oligosaccharyl transferase complex that links high mannose oligosaccharides to asparagine residues found in the Asn-X-Ser/Thr consensus motif of nascent polypeptide chains. This protein forms part of the regulatory subunit of the 26S proteasome and may mediate binding of ubiquitin-like domains to this proteasome.</p> <p>Publication Note: This RefSeq record includes a subset of the publications that are available for this gene. Please see the Entrez Gene record to access additional publications.</p> <p>Alias Symbols: DKFZp686B16177, OST1, RBPH1</p> <p>Protein Interaction Partner: UBQLN1, UBC, SGTA, SUMO3, STAU1, LGR4, SUMO1, NEDD8, MDM2, ASB5, ASB11, BMI1, EED, RNF2, EGFR, ADRB2, CLN5, CLN3, AMFR, OST4, MMS19, env, UBL4A, WHSC1, VCAM1, FN1, ATF2, VCP, ESR1, ECT2, STT3B, SND1, SYNCRIP, TECR, VDAC2, SSR3, RPN2, RPSA, ILF3, SLC25A5,</p> <p>Protein Size: 607</p>
Molecular Weight:	66 kDa
Gene ID:	6184
NCBI Accession:	<a href="#">NM_002950</a> , <a href="#">NP_002941</a>
UniProt:	<a href="#">P04843</a>

## Application Details

Application Notes:	Optimal working dilutions should be determined experimentally by the investigator.
Comment:	Antigen size: 607 AA
Restrictions:	For Research Use only

## Handling

Format:	Liquid
Concentration:	Lot specific

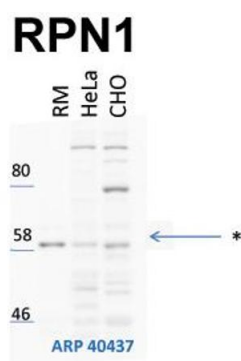
## Handling

Buffer:	Liquid. Purified antibody supplied in 1x PBS buffer with 0.09 % (w/v) sodium azide and 2 % sucrose.
Preservative:	Sodium azide
Precaution of Use:	This product contains Sodium azide: a POISONOUS AND HAZARDOUS SUBSTANCE which should be handled by trained staff only.
Handling Advice:	Avoid repeated freeze-thaw cycles.
Storage:	-20 °C
Storage Comment:	For short term use, store at 2-8°C up to 1 week. For long term storage, store at -20°C in small aliquots to prevent freeze-thaw cycles.

## Publications

Product cited in:	Huang, Chen, Wu, Huang, He, Tang, Wang, Wang: "The zebrafish miR-462/miR-731 cluster is induced under hypoxic stress via hypoxia-inducible factor 1α and functions in cellular adaptations." in: <b>FASEB journal : official publication of the Federation of American Societies for Experimental Biology</b> , Vol. 29, Issue 12, pp. 4901-13, (2015) ( <a href="#">PubMed</a> ).
-------------------	--

## Images



### Western Blotting

#### Image 1. WB Suggested Anti-RPN1 Antibody

**Titration:** 1 ug/ml

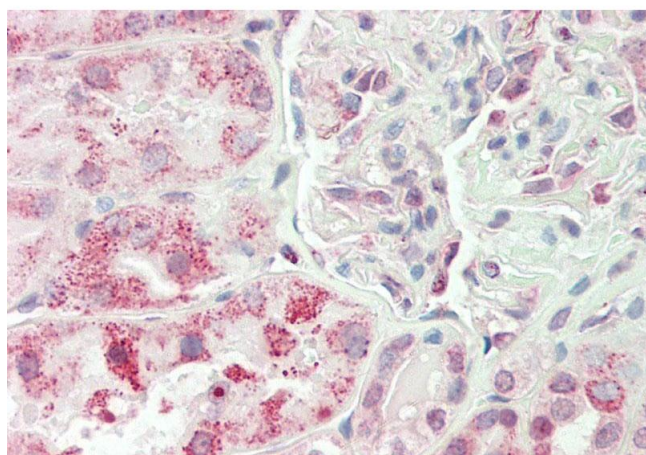
**Positive Control:** HeLa and CHO-K1 cell lines, rough canine microsomes

See Immunoblot 2 Data and Customer Feedback tab for more information.



#### Western Blotting

**Image 2.** WB Suggested Anti-RPN1 Antibody Titration: 0.2-1 ug/ml ELISA Titer: 1:312500 Positive Control: Transfected 293T



#### Immunohistochemistry

**Image 3.** Rabbit Anti-RPN1 antibody Formalin Fixed Paraffin Embedded Tissue: Human Kidney Primary antibody Concentration: 1:100 Secondary Antibody: Donkey anti-Rabbit-Cy3 Secondary Antibody Concentration: 1:200 Magnification: 20x Exposure Time: 0.5-2.0sec

Please check the [product details page](#) for more images. Overall 4 images are available for ABIN2778827.