



Datasheet for ABIN2778832
anti-SNRPB antibody (Middle Region)



[Go to Product page](#)

2 Images

Overview

Quantity:	100 µL
Target:	SNRPB
Binding Specificity:	Middle Region
Reactivity:	Human, Mouse, Rat, Rabbit, Cow, Dog, Guinea Pig, Horse, Zebrafish (Danio rerio)
Host:	Rabbit
Clonality:	Polyclonal
Conjugate:	This SNRPB antibody is un-conjugated
Application:	Western Blotting (WB)

Product Details

Immunogen:	The immunogen is a synthetic peptide directed towards the middle region of human SNRPB
Sequence:	LRGENLVSMTEGPPPKDTG IARVPLAGAA GPGIGRAAG RGIPAGVPMP
Predicted Reactivity:	Cow: 100%, Dog: 100%, Guinea Pig: 100%, Horse: 100%, Human: 100%, Mouse: 100%, Rabbit: 100%, Rat: 100%, Zebrafish: 100%
Characteristics:	This is a rabbit polyclonal antibody against SNRPB. It was validated on Western Blot using a cell lysate as a positive control.
Purification:	Affinity Purified

Target Details

Target:	SNRPB
---------	-------

Target Details

Alternative Name: [SNRPB \(SNRPB Products\)](#)

Background: SNRPB is one of several nuclear proteins that are found in common among U1, U2, U4/U6, and U5 small ribonucleoprotein particles (snRNPs). These snRNPs are involved in pre-mRNA splicing, and the encoded protein may also play a role in pre-mRNA splicing or snRNP structure. Autoantibodies from patients with systemic lupus erythematosus frequently recognize epitopes on the encoded protein. The protein encoded by this gene is one of several nuclear proteins that are found in common among U1, U2, U4/U6, and U5 small ribonucleoprotein particles (snRNPs). These snRNPs are involved in pre-mRNA splicing, and the encoded protein may also play a role in pre-mRNA splicing or snRNP structure. Autoantibodies from patients with systemic lupus erythematosus frequently recognize epitopes on the encoded protein. Two transcript variants encoding different isoforms (B and B') have been found for this gene.

Alias Symbols: COD, SNRPB1, SmB/SmB', snRNP-B, SmB/B', Sm-B/B'

Protein Interaction Partner: RFX6, KRT40, L3MBTL3, GOLGA2, DAB1, TRIM23, CEP55, BANP, SS18L1, TFIP11, RBPMS, CD2BP2, CALCOCO2, HUWE1, PNMA1, PSMA3, UBC, LIN28A, MEPCE, RPA3, RPA2, RPA1, SF3A3, NCS1, CDKN2A, SRPK3, PRPF4B, SRPK2, SKIV2L, ICAM1, CD81, IGSF8, PAN2, Snrpc, LSM8, SNRPD3,

Protein Size: 231

Molecular Weight: 24 kDa

Gene ID: 6628

NCBI Accession: [NM_003091](#), [NP_003082](#)

UniProt: [Q66K91](#)

Pathways: [Ribonucleoprotein Complex Subunit Organization](#)

Application Details

Application Notes: Optimal working dilutions should be determined experimentally by the investigator.

Comment: Antigen size: 231 AA

Restrictions: For Research Use only

Handling

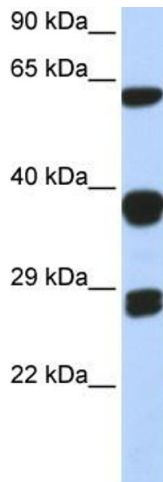
Format: Liquid

Concentration: Lot specific

Handling

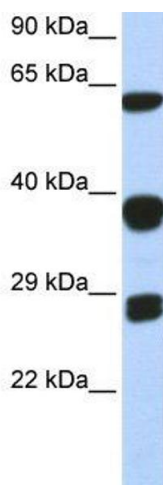
Buffer:	Liquid. Purified antibody supplied in 1x PBS buffer with 0.09 % (w/v) sodium azide and 2 % sucrose.
Preservative:	Sodium azide
Precaution of Use:	This product contains Sodium azide: a POISONOUS AND HAZARDOUS SUBSTANCE which should be handled by trained staff only.
Handling Advice:	Avoid repeated freeze-thaw cycles.
Storage:	-20 °C
Storage Comment:	For short term use, store at 2-8°C up to 1 week. For long term storage, store at -20°C in small aliquots to prevent freeze-thaw cycles.

Images



Western Blotting

Image 1. WB Suggested Anti-SNRPB Antibody Titration: 0.2-1 ug/ml ELISA Titer: 1:312500 Positive Control: 293T cell lysate SNRPB is strongly supported by BioGPS gene expression data to be expressed in Human HEK293T cells



Western Blotting

Image 2. WB Suggested Anti-SNRPB Antibody Titration: 0.2-1 µg/mL ELISA Titer: 1:12500 Positive Control: 93T cell lysate SNRPB is strongly supported by BioGPS gene expression data to be expressed in Human HEK293T cells