



[Go to Product page](#)

Datasheet for ABIN2778833
anti-SNRPB antibody (N-Term)

1 Image

Overview

Quantity:	100 µL
Target:	SNRPB
Binding Specificity:	N-Term
Reactivity:	Human, Mouse, Rat, Rabbit, Cow, Dog, Guinea Pig, Horse, Zebrafish (Danio rerio)
Host:	Rabbit
Clonality:	Polyclonal
Conjugate:	This SNRPB antibody is un-conjugated
Application:	Western Blotting (WB)

Product Details

Immunogen:	The immunogen is a synthetic peptide directed towards the N terminal region of human SNRPB
Sequence:	DKHMNLILCD CDEFKIKPK NSKQAEREEK RVLGLVLLRG ENLVSMTVEG
Predicted Reactivity:	Cow: 100%, Dog: 100%, Guinea Pig: 100%, Horse: 100%, Human: 100%, Mouse: 100%, Rabbit: 100%, Rat: 100%, Zebrafish: 93%
Characteristics:	This is a rabbit polyclonal antibody against SNRPB. It was validated on Western Blot using a cell lysate as a positive control.
Purification:	Affinity Purified

Target Details

Target:	SNRPB
---------	-------

Target Details

Alternative Name:	SNRPB (SNRPB Products)
Background:	<p>SNRPB is one of several nuclear proteins that are found in common among U1, U2, U4/U6, and U5 small ribonucleoprotein particles (snRNPs). These snRNPs are involved in pre-mRNA splicing, and the encoded protein may also play a role in pre-mRNA splicing or</p> <p>Alias Symbols: COD, SNRPB1, SmB/SmB', snRNP-B, SmB/B', Sm-B/B'</p> <p>Protein Interaction Partner: RFX6, KRT40, L3MBTL3, GOLGA2, DAB1, TRIM23, CEP55, BANP, SS18L1, TFIP11, RBPMS, CD2BP2, CALCOCO2, HUWE1, PNMA1, PSMA3, UBC, LIN28A, MEPCE, RPA3, RPA2, RPA1, SF3A3, NCS1, CDKN2A, SRPK3, PRPF4B, SRPK2, SKIV2L, ICAM1, CD81, IGSF8, PAN2, Snrpc, LSM8, SNRPD3,</p> <p>Protein Size: 231</p>
Molecular Weight:	24 kDa
Gene ID:	6628
NCBI Accession:	NM_003091 , NP_003082
UniProt:	Q66K91
Pathways:	Ribonucleoprotein Complex Subunit Organization

Application Details

Application Notes:	Optimal working dilutions should be determined experimentally by the investigator.
Comment:	Antigen size: 231 AA
Restrictions:	For Research Use only

Handling

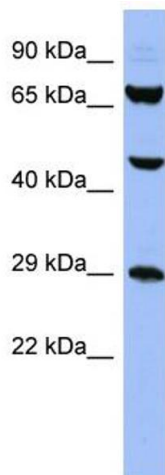
Format:	Liquid
Concentration:	Lot specific
Buffer:	Liquid. Purified antibody supplied in 1x PBS buffer with 0.09 % (w/v) sodium azide and 2 % sucrose.
Preservative:	Sodium azide
Precaution of Use:	This product contains Sodium azide: a POISONOUS AND HAZARDOUS SUBSTANCE which should be handled by trained staff only.
Handling Advice:	Avoid repeated freeze-thaw cycles.

Handling

Storage: -20 °C

Storage Comment: For short term use, store at 2-8°C up to 1 week. For long term storage, store at -20°C in small aliquots to prevent freeze-thaw cycles.

Images



Western Blotting

Image 1. WB Suggested Anti-SNRPB Antibody Titration: 0.2-1 ug/ml ELISA Titer: 1:312500 Positive Control: HT1080 cell lysate