



[Go to Product page](#)

Datasheet for ABIN2778849  
**anti-XPO1 antibody (C-Term)**

4 Images

1 Publication

### Overview

Quantity:	100 µL
Target:	XPO1
Binding Specificity:	C-Term
Reactivity:	Human, Mouse, Rat, Cow, Dog, Horse, Zebrafish (Danio rerio), Rabbit, Pig, Saccharomyces cerevisiae
Host:	Rabbit
Clonality:	Polyclonal
Conjugate:	This XPO1 antibody is un-conjugated
Application:	Western Blotting (WB), Immunohistochemistry (IHC)

### Product Details

Immunogen:	The immunogen is a synthetic peptide directed towards the C terminal region of human XPO1
Sequence:	NKLGGHITAE IPQIFDAVFE CTLNMINKDF EEYPEHRTNF FLLQAVNSH
Predicted Reactivity:	Cow: 100%, Dog: 100%, Horse: 100%, Human: 100%, Mouse: 100%, Pig: 100%, Rabbit: 100%, Rat: 100%, Yeast: 85%, Zebrafish: 93%
Characteristics:	This is a rabbit polyclonal antibody against XPO1. It was validated on Western Blot using a cell lysate as a positive control.
Purification:	Affinity Purified

### Target Details

Target:	XPO1
---------	------

## Target Details

---

Alternative Name: [XP01 \(XP01 Products\)](#)

---

Background: XP01 mediates leucine-rich nuclear export signal (NES)-dependent protein transport. Exportin 1 specifically inhibits the nuclear export of Rev and U snRNAs. It is involved in the control of several cellular processes by controlling the localization of cyclin B, MPAK, and MAPKAP kinase 2. XP01 also regulates NFAT and AP-1. The protein encoded by this gene mediates leucine-rich nuclear export signal (NES)-dependent protein transport. Exportin 1 specifically inhibits the nuclear export of Rev and U snRNAs. It is involved in the control of several cellular processes by controlling the localization of cyclin B, MPAK, and MAPKAP kinase 2. This protein also regulates NFAT and AP-1. Publication Note: This RefSeq record includes a subset of the publications that are available for this gene. Please see the Entrez Gene record to access additional publications.

Alias Symbols: CRM1, DKFZp686B1823, emb, exp1

Protein Interaction Partner: ABL1, UBC, HUWE1, ELAVL1, KEAP1, SUMO2, SUMO3, USP16, STAU1, CDC37L1, RNF2, rev, TUBB, SCPEP1, CAMK1D, DCPS, HSPA1L, HNRNPK, GNAI3, EEF2, CAPN2, TWF2, FERMT2, UBA3, NAE1, STK24, YWHAH, YWHAE, VCL, TUFM, PCYT2, PPP5C, PPP1CA, EGFR, LOC366310, CLN5, CLN3, S

Protein Size: 1071

---

Molecular Weight: 123 kDa

---

Gene ID: 7514

---

NCBI Accession: [NM\\_003400](#), [NP\\_003391](#)

---

UniProt: [O14980](#)

---

Pathways: [M Phase](#)

---

## Application Details

---

Application Notes: Optimal working dilutions should be determined experimentally by the investigator.

---

Comment: Antigen size: 1071 AA

---

Restrictions: For Research Use only

---

## Handling

---

Format: Liquid

---

Concentration: Lot specific

---

Buffer: Liquid. Purified antibody supplied in 1x PBS buffer with 0.09 % (w/v) sodium azide and 2 %

---

## Handling

---

sucrose.

Preservative: Sodium azide

Precaution of Use: This product contains Sodium azide: a POISONOUS AND HAZARDOUS SUBSTANCE which should be handled by trained staff only.

Handling Advice: Avoid repeated freeze-thaw cycles.

Storage: -20 °C

Storage Comment: For short term use, store at 2-8°C up to 1 week. For long term storage, store at -20°C in small aliquots to prevent freeze-thaw cycles.

## Publications

---

Product cited in: Lazrek, Goffard, Schanen, Karquel, Bocket, Lion, Devaux, Hedouin, Gosset, Hober: "Detection of hepatitis C virus antibodies and RNA among medicolegal autopsy cases in Northern France." in: **Diagnostic microbiology and infectious disease**, Vol. 55, Issue 1, pp. 55-8, (2006) ([PubMed](#)).

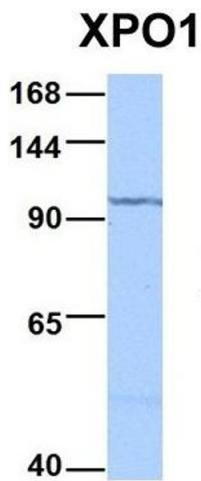
## Images

---



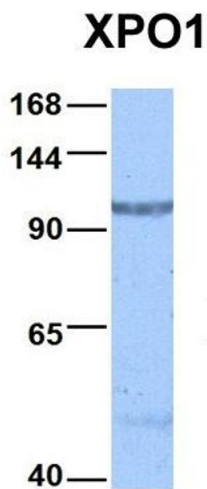
### Western Blotting

**Image 1.** WB Suggested Anti-XPO1 Antibody Titration: 0.2-1 ug/ml Positive Control: Human heart



**Western Blotting**

**Image 2.** Host: Rabbit Target Name: XPO1 Sample Type: HepG2 Antibody Dilution: 1.0ug/ml XPO1 is supported by BioGPS gene expression data to be expressed in HepG2



**Western Blotting**

**Image 3.** Host: Rabbit Target Name: XPO1 Sample Type: HeLa Antibody Dilution: 1.0ug/ml XPO1 is supported by BioGPS gene expression data to be expressed in HeLa

Please check the [product details page](#) for more images. Overall 4 images are available for ABIN2778849.