

Datasheet for ABIN2778850  
**anti-XPO1 antibody (Middle Region)**



[Go to Product page](#)

2 Images

## Overview

|                      |  |
|----------------------|--|
| Quantity:            | 100 µL   |
| Target:              | XPO1   |
| Binding Specificity: | Middle Region  |
| Reactivity:          | Human, Mouse, Rat, Cow, Dog, Horse, Zebrafish (Danio rerio), Rabbit, Pig, Guinea Pig |
| Host:                | Rabbit   |
| Clonality:           | Polyclonal   |
| Conjugate:           | This XPO1 antibody is un-conjugated  |
| Application:         | Western Blotting (WB), Immunohistochemistry (IHC)                                    |

## Product Details

|                       |  |
|-----------------------|--|
| Immunogen:            | The immunogen is a synthetic peptide directed towards the middle region of human XPO1  |
| Sequence:             | IPAFKEHLRD FLVQIKEFAG EDTSDLFLEE REIALRQADE EKHKRQMSVP   |
| Predicted Reactivity: | Cow: 86%, Dog: 86%, Guinea Pig: 77%, Horse: 86%, Human: 100%, Mouse: 86%, Pig: 86%, Rabbit: 86%, Rat: 86%, Zebrafish: 79%      |
| Characteristics:      | This is a rabbit polyclonal antibody against XPO1. It was validated on Western Blot using a cell lysate as a positive control. |
| Purification:         | Affinity Purified  |

## Target Details

|         |      |
|---------|------|
| Target: | XPO1 |
|---------|------|

## Target Details

|                   |  |
|-------------------|--|
| Alternative Name: | XP01 ( <a href="#">XP01 Products</a> )   |
| Background:       | <p>XP01 mediates leucine-rich nuclear export signal (NES)-dependent protein transport. Exportin 1 specifically inhibits the nuclear export of Rev and U snRNAs. It is also involved in the control of several cellular processes by controlling the localization of cyclin B, MPAK, and MAPKAP kinase 2. This protein also regulates NFAT and AP-1. The protein encoded by this gene mediates leucine-rich nuclear export signal (NES)-dependent protein transport. Exportin 1 specifically inhibits the nuclear export of Rev and U snRNAs. It is involved in the control of several cellular processes by controlling the localization of cyclin B, MPAK, and MAPKAP kinase 2. This protein also regulates NFAT and AP-1. Publication Note: This RefSeq record includes a subset of the publications that are available for this gene. Please see the Entrez Gene record to access additional publications.</p> <p>Alias Symbols: CRM1, DKFZp686B1823, emb, exp1</p> <p>Protein Interaction Partner: ABL1, UBC, HUWE1, ELAVL1, KEAP1, SUMO2, SUMO3, USP16, STAU1, CDC37L1, RNF2, rev, TUBB, SCPEP1, CAMK1D, DCPS, HSPA1L, HNRNPK, GNAI3, EEF2, CAPN2, TWF2, FERMT2, UBA3, NAE1, STK24, YWHAH, YWHAE, VCL, TUFM, PCYT2, PPP5C, PPP1CA, EGFR, LOC366310, CLN5, CLN3, S</p> <p>Protein Size: 1071</p> |
| Molecular Weight: | 123 kDa  |
| Gene ID:          | 7514   |
| NCBI Accession:   | <a href="#">NM_003400</a> , <a href="#">NP_003391</a>  |
| UniProt:          | <a href="#">O14980</a>   |
| Pathways:         | <a href="#">M Phase</a>  |

## Application Details

|                    |  |
|--------------------|--|
| Application Notes: | Optimal working dilutions should be determined experimentally by the investigator. |
| Comment:           | Antigen size: 1071 AA  |
| Restrictions:      | For Research Use only  |

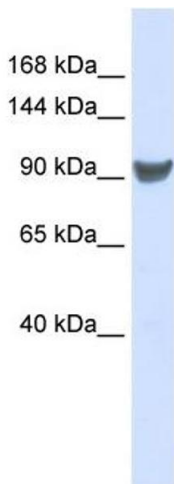
## Handling

|                |              |
|----------------|--------------|
| Format:        | Liquid       |
| Concentration: | Lot specific |

## Handling

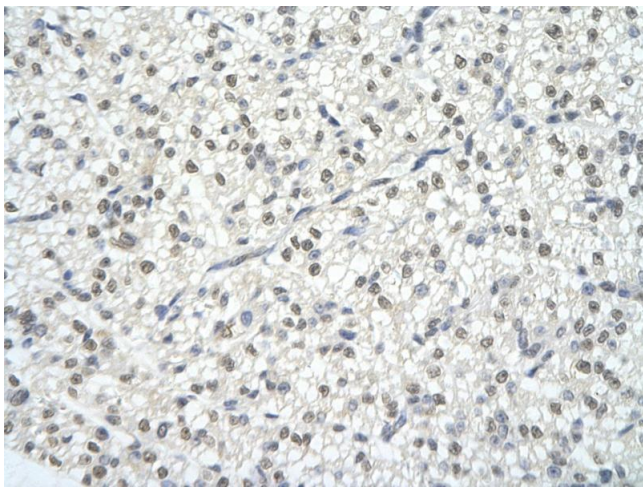
|                    |   |
|--------------------|---|
| Buffer:            | Liquid. Purified antibody supplied in 1x PBS buffer with 0.09 % (w/v) sodium azide and 2 % sucrose.                                     |
| Preservative:      | Sodium azide  |
| Precaution of Use: | This product contains Sodium azide: a POISONOUS AND HAZARDOUS SUBSTANCE which should be handled by trained staff only.                  |
| Handling Advice:   | Avoid repeated freeze-thaw cycles.  |
| Storage:           | -20 °C  |
| Storage Comment:   | For short term use, store at 2-8°C up to 1 week. For long term storage, store at -20°C in small aliquots to prevent freeze-thaw cycles. |

## Images



### Western Blotting

**Image 1.** WB Suggested Anti-XPO1 Antibody Titration: 0.2-1 ug/ml ELISA Titer: 1:312500 Positive Control: 293T cell lysate XPO1 is supported by BioGPS gene expression data to be expressed in HEK293T



### Immunohistochemistry

**Image 2.** Rabbit Anti-XPO1 antibody Paraffin Embedded Tissue: Human Heart cell Cellular Data: cardiac cell of renal tubule Antibody Concentration: 4.0-8.0 ug/ml Magnification: 400X