

Datasheet for ABIN2778858

anti-KHSRP antibody (Middle Region)



[Go to Product page](#)

2 Images

1 Publication

Overview

Quantity:	100 µL
Target:	KHSRP
Binding Specificity:	Middle Region
Reactivity:	Human, Mouse, Rat, Cow, Dog, Horse, Guinea Pig, Rabbit, Zebrafish (Danio rerio)
Host:	Rabbit
Clonality:	Polyclonal
Conjugate:	This KHSRP antibody is un-conjugated
Application:	Western Blotting (WB), Immunohistochemistry (IHC)

Product Details

Immunogen:	The immunogen is a synthetic peptide directed towards the middle region of Human KHSRP
Sequence:	WEEYYKKQAAQ VATGGGPGAP PGSQPDYSAA WAEYYRQQAA YYGQTPGPGG
Predicted Reactivity:	Cow: 100%, Dog: 100%, Guinea Pig: 100%, Horse: 100%, Human: 100%, Mouse: 100%, Rabbit: 93%, Rat: 100%, Zebrafish: 100%
Characteristics:	This is a rabbit polyclonal antibody against KHSRP. It was validated on Western Blot.
Purification:	Affinity Purified

Target Details

Target:	KHSRP
Alternative Name:	KHSRP (KHSRP Products)

Target Details

Background:	<p>KHSRP binds to the dendritic targeting element and may play a role in mRNA trafficking. It is part of a ternary complex that binds to the downstream control sequence (DCS) of the pre-mRNA. KHSRP mediates exon inclusion in transcripts that are subject to tissue-specific alternative splicing. It may interact with single-stranded DNA from the far-upstream element (FUSE).It is also involved in degradation of inherently unstable mRNAs that contain AU-rich elements (AREs) in their 3'-UTR, possibly by recruiting degradation machinery to ARE-containing mRNAs.</p> <p>Alias Symbols: FBP2, FUBP2, KSRP, MGC99676</p> <p>Protein Interaction Partner: HUWE1, Bace1, UBC, STAU1, LGR4, MDM2, WWOX, SUZ12, EED, RNF2, NAP1L4, HNRNPD, GFPT1, GARS, APBB1, ALDH16A1, TARDBP, CD81, MPG, UBL4A, WHSC1, VCAM1, ITGA4, FN1, STRIP1, ASF1B, CPLX1, CIRBP, SUMO1, RAE1, CAND1, COPS5, CUL1, CUL2, CUL3, CUL4B, CUL5, NEDD8, C</p> <p>Protein Size: 711</p>
Molecular Weight:	73 kDa
Gene ID:	8570
NCBI Accession:	NM_003685 , NP_003676
UniProt:	Q92945

Application Details

Application Notes:	Optimal working dilutions should be determined experimentally by the investigator.
Comment:	Antigen size: 711 AA
Restrictions:	For Research Use only

Handling

Format:	Liquid
Concentration:	Lot specific
Buffer:	Liquid. Purified antibody supplied in 1x PBS buffer with 0.09 % (w/v) sodium azide and 2 % sucrose.
Preservative:	Sodium azide
Precaution of Use:	This product contains Sodium azide: a POISONOUS AND HAZARDOUS SUBSTANCE which should be handled by trained staff only.

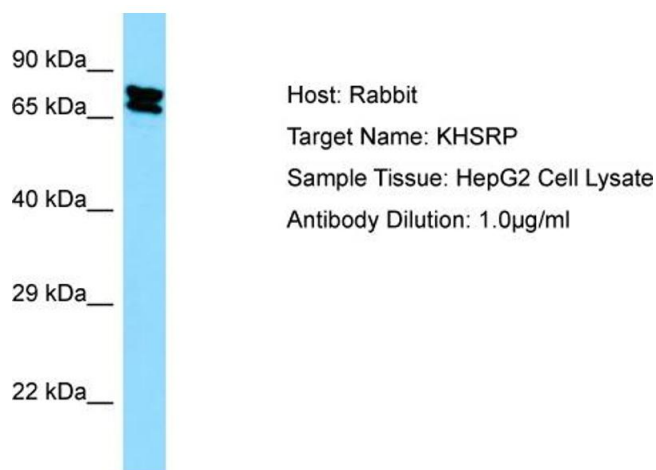
Handling

Handling Advice:	Avoid repeated freeze-thaw cycles.
Storage:	-20 °C
Storage Comment:	For short term use, store at 2-8°C up to 1 week. For long term storage, store at -20°C in small aliquots to prevent freeze-thaw cycles.

Publications

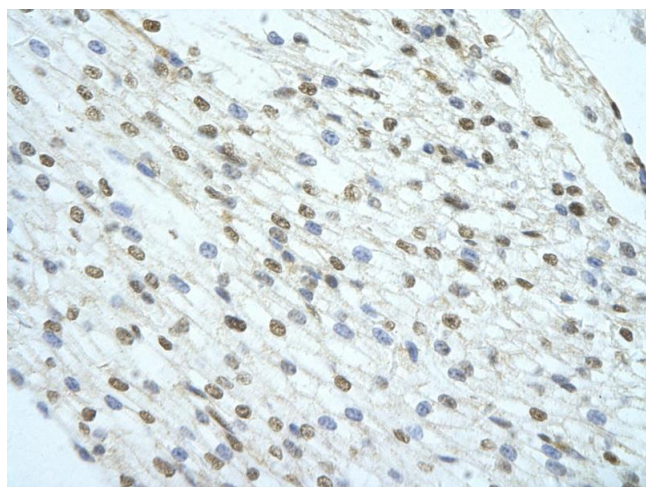
Product cited in: Ahn, Hwang, Liu, Wang, Zhang, Stephenson, Boronina, Cole, Dinkova-Kostova, Talalay, Cole: "Electrophilic tuning of the chemoprotective natural product sulforaphane." in: **Proceedings of the National Academy of Sciences of the United States of America**, Vol. 107, Issue 21, pp. 9590-5, (2010) ([PubMed](#)).

Images



Western Blotting

Image 1. WB Suggested Anti-KHSRP Antibody Titration: 0.2-1 ug/ml ELISA Titer: 1:1562500 Positive Control: 293T cell lysate KHSRP is strongly supported by BioGPS gene expression data to be expressed in Human HEK293T cells



Immunohistochemistry

Image 2. Rabbit Anti-KHSRP Antibody Paraffin Embedded Tissue: Human Heart cell Cellular Data: cardiac cell of renal tubule Antibody Concentration: 4.0-8.0 ug/ml Magnification: 400X