

Datasheet for ABIN2778859
anti-PRKRA antibody (Middle Region)[Go to Product page](#)

2 Images

1 Publication

Overview

Quantity:	100 µL
Target:	PRKRA
Binding Specificity:	Middle Region
Reactivity:	Human, Mouse, Rat, Dog, Cow, Rabbit, Guinea Pig, Horse
Host:	Rabbit
Clonality:	Polyclonal
Conjugate:	This PRKRA antibody is un-conjugated
Application:	Western Blotting (WB), Immunohistochemistry (IHC)

Product Details

Immunogen:	The immunogen is a synthetic peptide directed towards the middle region of human PRKRA
Sequence:	RLPEYTLSQE GGPAHKREYT TICRLESFME TGKGASKKQA KRNAAEKFLA
Predicted Reactivity:	Cow: 100%, Dog: 100%, Guinea Pig: 100%, Horse: 100%, Human: 100%, Mouse: 100%, Rabbit: 100%, Rat: 100%
Characteristics:	This is a rabbit polyclonal antibody against PRKRA. It was validated on Western Blot and immunohistochemistry.
Purification:	Affinity Purified

Target Details

Target:	PRKRA
---------	-------

Target Details

Alternative Name:	PRKRA (PRKRA Products)
Background:	<p>PRKRA contains 3 DRBM (double-stranded RNA-binding) domains. It appears to have a pro-apoptotic function that may be suppressed in the presence of growth factor and activates EIF2AK2 in absence of double stranded RNA (dsRNA).</p> <p>Alias Symbols: RAX, PACT, DYT16, HSD14</p> <p>Protein Interaction Partner: ZMAT3, PRKRA, TARBP2, LYAR, STAU1, UBC, H1FO, EIF2AK2, CCDC124, C1orf35, DDX50, NOC3L, NOP16, STAU2, ZNF346, GTPBP4, DICER1, RBM34, EBNA1BP2, IFRD2, TCOF1, BMI1, SRPK3, POLR2G, MDC1, CAND1, UBE2I, SIRT7, ZFP28, KIAA1377, NKRF, SNX5, RABEPK, CEBPZ, SHC1, Z</p> <p>Protein Size: 313</p>
Molecular Weight:	34 kDa
Gene ID:	8575
NCBI Accession:	NM_003690 , NP_003681
UniProt:	O75569
Pathways:	Regulatory RNA Pathways

Application Details

Application Notes:	Optimal working dilutions should be determined experimentally by the investigator.
Comment:	Antigen size: 313 AA
Restrictions:	For Research Use only

Handling

Format:	Liquid
Concentration:	Lot specific
Buffer:	Liquid. Purified antibody supplied in 1x PBS buffer with 0.09 % (w/v) sodium azide and 2 % sucrose.
Preservative:	Sodium azide
Precaution of Use:	This product contains Sodium azide: a POISONOUS AND HAZARDOUS SUBSTANCE which should be handled by trained staff only.
Handling Advice:	Avoid repeated freeze-thaw cycles.

Handling

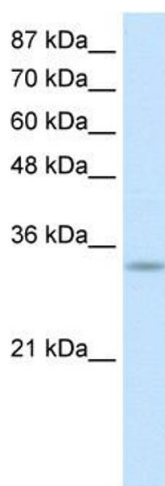
Storage: -20 °C

Storage Comment: For short term use, store at 2-8°C up to 1 week. For long term storage, store at -20°C in small aliquots to prevent freeze-thaw cycles.

Publications

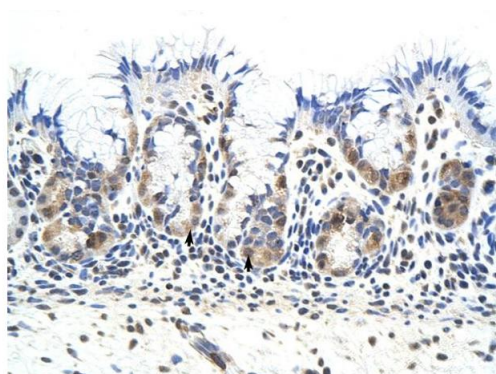
Product cited in: Sweetman, Münsterberg: "The vertebrate spalt genes in development and disease." in: **Developmental biology**, Vol. 293, Issue 2, pp. 285-93, (2006) ([PubMed](#)).

Images



Western Blotting

Image 1. WB Suggested Anti-PRKRA Antibody Titration: 0.2-1 ug/ml ELISA Titer: 1:62500 Positive Control: Jurkat cell lysate PRKRA is supported by BioGPS gene expression data to be expressed in Jurkat



Rabbit Anti-PRKRA Antibody
Catalog Number: ARP40475
Lot Number: QC9658
Paraffin Embedded Tissue: Human Stomach
Cells with Positive label: Epithelial cells of fundic gland (Indicated with Arrows)
Antibody Concentration: 4.0-8.0 µg/ml
Magnification: 400X

Immunohistochemistry

Image 2. Rabbit Anti-PRKRA Antibody Paraffin Embedded Tissue: Human Stomach Cellular Data: Epithelial cells of fundic gland Antibody Concentration: 4.0-8.0 ug/ml Magnification: 400X