

Datasheet for ABIN2778866
anti-EIF3G antibody (N-Term)[Go to Product page](#)

2 Images

Overview

Quantity:	100 µL
Target:	EIF3G
Binding Specificity:	N-Term
Reactivity:	Human, Rat, Mouse, Dog, Cow, Pig, Guinea Pig, Zebrafish (Danio rerio)
Host:	Rabbit
Clonality:	Polyclonal
Conjugate:	This EIF3G antibody is un-conjugated
Application:	Western Blotting (WB), Immunohistochemistry (IHC)

Product Details

Immunogen:	The immunogen is a synthetic peptide directed towards the N terminal region of human EIF3S4
Sequence:	SPEPELLPGA PLPPPKEVIN GNIKTVTEYK IDEDGKKFKI VRTFRIETRK
Predicted Reactivity:	Cow: 100%, Dog: 100%, Guinea Pig: 93%, Human: 100%, Mouse: 100%, Pig: 100%, Rat: 100%, Zebrafish: 79%
Characteristics:	This is a rabbit polyclonal antibody against EIF3S4. It was validated on Western Blot and immunohistochemistry.
Purification:	Protein A purified

Target Details

Target:	EIF3G
---------	-------

Target Details

Alternative Name:	EIF3S4 (EIF3G Products)
Background:	<p>EIF3S4 contains 1 RRM (RNA recognition motif) domain. It binds to the 40S ribosome and promotes the binding of methionyl-tRNAⁱ and mRNA. This subunit binds to the 18S rRNA.</p> <p>Alias Symbols: EIF3S4, EIF3-P42, eIF3-p44, eIF3-delta</p> <p>Protein Interaction Partner: FAM9B, GOLGA2, SUMO2, EIF3I, NCL, DYNC1I2, EIF3B, EIF3C, NPM1, ICAM1, CD81, IGSF8, PAN2, EIF3D, DDX3X, gag-pol, EIF3L, EIF3K, EIF3M, EIF3H, EIF3F, EIF3A, EIF3E, APP, CUL3, ACD, POT1, YWHAZ, UBC, GADD45G, TK1, SNCA, SMN1, PKN2, PIN1, Itsn2, USP3, MPHOSPH6,</p> <p>Protein Size: 320</p>
Molecular Weight:	35 kDa
Gene ID:	8666
NCBI Accession:	NM_003755 , NP_003746
UniProt:	O75821
Pathways:	Ribonucleoprotein Complex Subunit Organization

Application Details

Application Notes:	Optimal working dilutions should be determined experimentally by the investigator.
Comment:	Antigen size: 320 AA
Restrictions:	For Research Use only

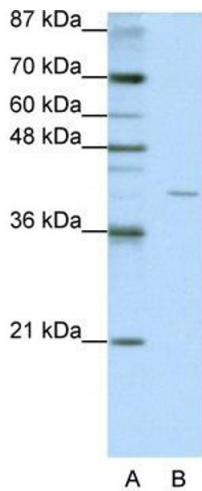
Handling

Format:	Liquid
Concentration:	Lot specific
Buffer:	Liquid. Purified antibody supplied in 1x PBS buffer with 0.09 % (w/v) sodium azide and 2 % sucrose.
Preservative:	Sodium azide
Precaution of Use:	This product contains Sodium azide: a POISONOUS AND HAZARDOUS SUBSTANCE which should be handled by trained staff only.
Handling Advice:	Avoid repeated freeze-thaw cycles.
Storage:	-20 °C

Handling

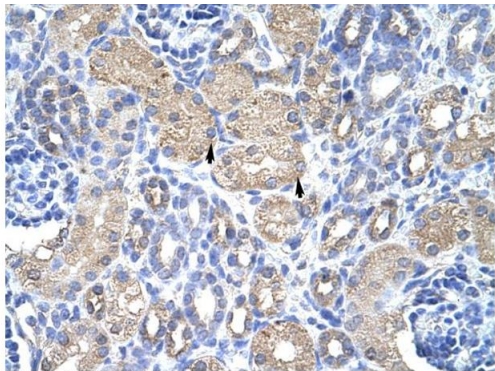
Storage Comment: For short term use, store at 2-8°C up to 1 week. For long term storage, store at -20°C in small aliquots to prevent freeze-thaw cycles.

Images



Western Blotting

Image 1. WB Suggested Anti-EIF3S4 Antibody Titration: 1.25ug/ml ELISA Titer: 1:312500 Positive Control: HepG2 cell lysate



Rabbit Anti-EIF3S4 Antibody
Catalog Number: ARP40486
Lot Number: QC9663
Paraffin Embedded Tissue: Human Kidney
Cells with Positive label: Epithelial cells of renal tubule (Indicated with Arrows)
Antibody Concentration: 4.0-8.0 µg/ml
Magnification: 400X

Immunohistochemistry

Image 2. Rabbit Anti-EIF3S4 Antibody Paraffin Embedded Tissue: Human Kidney Cellular Data: Epithelial cells of renal tubule Antibody Concentration: 4.0-8.0 ug/ml Magnification: 400X