

Datasheet for ABIN2778880
anti-CPNE1 antibody (N-Term)

3 Images

[Go to Product page](#)

Overview

Quantity:	100 µL
Target:	CPNE1
Binding Specificity:	N-Term
Reactivity:	Human, Cow, Dog, Mouse, Rat, Rabbit, Sheep, Horse, Zebrafish (Danio rerio), Guinea Pig
Host:	Rabbit
Clonality:	Polyclonal
Conjugate:	This CPNE1 antibody is un-conjugated
Application:	Western Blotting (WB), Immunohistochemistry (IHC)

Product Details

Immunogen:	The immunogen is a synthetic peptide directed towards the N terminal region of human CPNE1
Sequence:	TVQKLRFGIY DIDNKTPELR DDDFLGGAEC SLGQIVSSQV LTLPLMLKPG
Predicted Reactivity:	Cow: 93%, Dog: 93%, Guinea Pig: 93%, Horse: 93%, Human: 100%, Mouse: 93%, Rabbit: 93%, Rat: 93%, Sheep: 93%, Zebrafish: 79%
Characteristics:	This is a rabbit polyclonal antibody against CPNE1. It was validated on Western Blot and immunohistochemistry.
Purification:	Protein A purified

Target Details

Target:	CPNE1
---------	-------

Target Details

Alternative Name: CPNE1 ([CPNE1 Products](#))

Background: Calcium-dependent membrane-binding proteins may regulate molecular events at the interface of the cell membrane and cytoplasm. CPNE1 is a calcium-dependent protein that also contains two N-terminal type II C2 domains and an integrin A domain-like sequence in the C-terminus. However, the protein does not contain a predicted signal sequence or transmembrane domains. This protein has a broad tissue distribution and it may function in membrane trafficking. Calcium-dependent membrane-binding proteins may regulate molecular events at the interface of the cell membrane and cytoplasm. This gene encodes a calcium-dependent protein that also contains two N-terminal type II C2 domains and an integrin A domain-like sequence in the C-terminus. However, the encoded protein does not contain a predicted signal sequence or transmembrane domains. This protein has a broad tissue distribution and it may function in membrane trafficking. This gene and the gene for RNA binding motif protein 12 overlap at map location 20q11.21. Sequence analysis identified multiple alternatively spliced variants in the 5' UTR. All variants encode the same protein.

Alias Symbols: CPN1, COPN1

Protein Interaction Partner: UBC, BAG3, BUB3, STK3, FN1, LIG4, TIMM13, TTL12, ST13, PYGB, ARRB2, SUMO2, UIMC1, HNRNPH1, UBE2O, WTAP, MYCBP, PITPNM2, CCDC22, BCOR, CPNE4, CPNE1, UBE2M, PDCD6, PPP5C, SPTBN1, RDX, MAP2K1, SKIL, ACTB, Cdc42bpb, Etl4, Cenpf, Mycbp2, Alg2, Nono,
Protein Size: 537

Molecular Weight: 59 kDa

Gene ID: 8904

NCBI Accession: [NM_003915](#), [NP_003906](#)

UniProt: [Q99829](#)

Application Details

Application Notes: Optimal working dilutions should be determined experimentally by the investigator.

Comment: Antigen size: 537 AA

Restrictions: For Research Use only

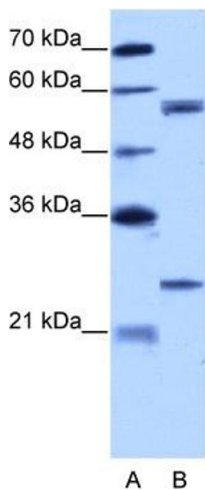
Handling

Format: Liquid

Handling

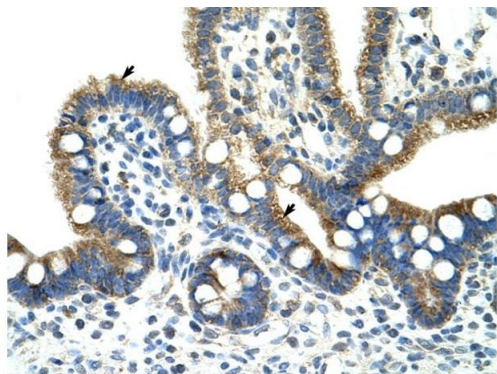
Concentration:	Lot specific
Buffer:	Liquid. Purified antibody supplied in 1x PBS buffer with 0.09 % (w/v) sodium azide and 2 % sucrose.
Preservative:	Sodium azide
Precaution of Use:	This product contains Sodium azide: a POISONOUS AND HAZARDOUS SUBSTANCE which should be handled by trained staff only.
Handling Advice:	Avoid repeated freeze-thaw cycles.
Storage:	-20 °C
Storage Comment:	For short term use, store at 2-8°C up to 1 week. For long term storage, store at -20°C in small aliquots to prevent freeze-thaw cycles.

Images



Western Blotting

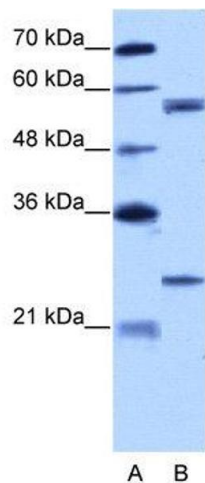
Image 1. WB Suggested Anti-CPNE1 Antibody Titration: 5.0ug/ml Positive Control: HepG2 cell lysate CPNE1 is supported by BioGPS gene expression data to be expressed in HepG2



Rabbit Anti-CPNE1 Antibody
Catalog Number: ARP40504
Lot Number: QC10181
Paraffin Embedded Tissue: Human Intestine
Cells with Positive label: Epithelial cells of intestinal villus (Indicated with Arrows)
Antibody Concentration: 4.0-8.0 µg/ml
Magnification: 400X

Immunohistochemistry

Image 2. Rabbit Anti-CPNE1 Antibody Paraffin Embedded Tissue: Human Intestine Cellular Data: Epithelial cells of intestinal villas Antibody Concentration: 4.0-8.0 ug/ml Magnification: 400X



Western Blotting

Image 3. WB Suggested Anti-CPNE1

Antibody Titration: 5.0 µg/mL

Positive Control: HepG2 cell lysate

CPNE1 is supported by BioGPS gene expression data to be expressed in HepG2