

Datasheet for ABIN2778883  
**anti-EIF2S1 antibody (C-Term)**



[Go to Product page](#)

3 Images

Overview

Quantity:	100 µL
Target:	EIF2S1
Binding Specificity:	C-Term
Reactivity:	Human, Rat, Mouse, Cow, Dog, Zebrafish (Danio rerio), Rabbit, Guinea Pig, Horse, Goat, Saccharomyces cerevisiae
Host:	Rabbit
Clonality:	Polyclonal
Conjugate:	This EIF2S1 antibody is un-conjugated
Application:	Western Blotting (WB), Immunohistochemistry (IHC)

Product Details

Immunogen:	The immunogen is a synthetic peptide directed towards the C terminal region of human EIF2S1
Sequence:	RGVFNVMQEP KVVTDTEDE LARQMERLER ENAEVDGDDD AEEMEAKAED
Predicted Reactivity:	Cow: 100%, Dog: 100%, Goat: 100%, Guinea Pig: 100%, Horse: 100%, Human: 100%, Mouse: 100%, Rabbit: 100%, Rat: 100%, Yeast: 79%, Zebrafish: 100%
Characteristics:	This is a rabbit polyclonal antibody against EIF2S1. It was validated on Western Blot and immunohistochemistry.
Purification:	Protein A purified

Target Details

Target:	EIF2S1
---------	--------

## Target Details

---

Alternative Name: [EIF2S1 \(EIF2S1 Products\)](#)

---

Background: The translation initiation factor eIF2 catalyzes the first regulated step of protein synthesis initiation, promoting the binding of the initiator tRNA to 40S ribosomal subunits. Binding occurs as a ternary complex of methionyl-tRNA, eIF2, and GTP. eIF2 is composed of 3 nonidentical subunits, alpha (36 kD), beta (38 kD), and gamma (52 kD). The rate of formation of the ternary complex is modulated by the phosphorylation state of eIF2-alpha. The translation initiation factor eIF2 catalyzes the first regulated step of protein synthesis initiation, promoting the binding of the initiator tRNA to 40S ribosomal subunits. Binding occurs as a ternary complex of methionyl-tRNA, eIF2, and GTP. eIF2 is composed of 3 nonidentical subunits, alpha (36 kD), beta (38 kD, MIM 603908), and gamma (52 kD, MIM 300161). The rate of formation of the ternary complex is modulated by the phosphorylation state of eIF2-alpha (Ernst et al., 1987).[supplied by OMIM].

Alias Symbols: EIF-2, EIF-2A, EIF-2alpha, EIF2, EIF2A

Protein Interaction Partner: HUWE1, UBC, SUMO2, SUMO3, RPA3, RPA2, RPA1, RNF2, EIF2S3, DARS, RPS27L, EEF1E1, AIMP1, EIF2S2, RPLP0, RPL27A, RPL15, RPL13, RPL7A, QARS, MARS, MAP4, TERT, NPM1, MMS19, Dlg4, VCAM1, UPF1, ITGA4, FN1, CSNK2A1, EIF2AK2, NCOA5, POP1, STRN, YBX1, DDX1, TMED9,

Protein Size: 315

---

Molecular Weight: 35 kDa

---

Gene ID: 1965

---

NCBI Accession: [NM\\_004094](#), [NP\\_004085](#)

---

UniProt: [P05198](#)

---

Pathways: [Ribonucleoprotein Complex Subunit Organization](#), [ER-Nucleus Signaling](#), [Hepatitis C](#)

---

## Application Details

---

Application Notes: Optimal working dilutions should be determined experimentally by the investigator.

---

Comment: Antigen size: 315 AA

---

Restrictions: For Research Use only

---

## Handling

---

Format: Liquid

---

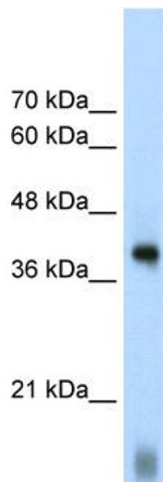
Concentration: Lot specific

---

## Handling

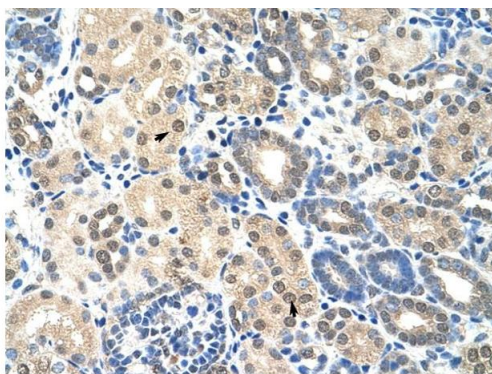
Buffer:	Liquid. Purified antibody supplied in 1x PBS buffer with 0.09 % (w/v) sodium azide and 2 % sucrose.
Preservative:	Sodium azide
Precaution of Use:	This product contains Sodium azide: a POISONOUS AND HAZARDOUS SUBSTANCE which should be handled by trained staff only.
Handling Advice:	Avoid repeated freeze-thaw cycles.
Storage:	-20 °C
Storage Comment:	For short term use, store at 2-8°C up to 1 week. For long term storage, store at -20°C in small aliquots to prevent freeze-thaw cycles.

## Images



### Western Blotting

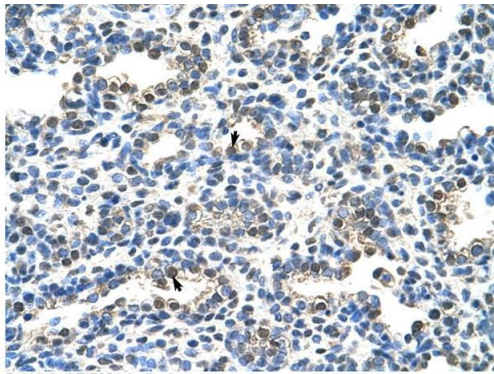
**Image 1.** WB Suggested Anti-EIF2S1 Antibody Titration:  
1.25ug/ml Positive Control: HepG2 cell lysate



Rabbit Anti-EIF2S1 Antibody  
Catalog Number: ARP40508  
Lot Number: QC11611  
Paraffin Embedded Tissue: Human Kidney  
Cells with Positive label: Epithelial cells of renal tubule (Indicated with Arrows)  
Antibody Concentration: 4.0-8.0 µg/ml  
Magnification: 400X

### Immunohistochemistry

**Image 2.** Rabbit Anti-EIF2S1 Antibody Paraffin Embedded  
Tissue: Human Kidney Cellular Data: Epithelial cells of renal  
tubule Antibody Concentration: 4.0-8.0 ug/ml Magnification:  
400X



Rabbit Anti-EIF2S1 Antibody  
Catalog Number: ARP40508  
Lot Number: QC11611  
Paraffin Embedded Tissue: Human Lung  
Cells with Positive label: Alveolar cells (Indicated with Arrows)  
Antibody Concentration: 4.0-8.0 µg/ml  
Magnification: 400X

### Immunohistochemistry

**Image 3.** Rabbit Anti-EIF2S1 Antibody Paraffin Embedded Tissue: Human Lung Cellular Data: Alveolar cells Antibody Concentration: 4.0-8.0 ug/ml Magnification: 400X