

Datasheet for ABIN2778893  
**anti-AGFG1 antibody (Middle Region)**[Go to Product page](#)

## 4 Images

## Overview

Quantity:	100 µL
Target:	AGFG1 (HRB)
Binding Specificity:	Middle Region
Reactivity:	Human, Mouse, Rat, Rabbit, Cow, Dog, Guinea Pig, Horse
Host:	Rabbit
Clonality:	Polyclonal
Conjugate:	This AGFG1 antibody is un-conjugated
Application:	Western Blotting (WB)

## Product Details

Immunogen:	The immunogen is a synthetic peptide directed towards the middle region of human HRB
Sequence:	SQSPVVGRSQ GQQQEKKQFD LLSDLGSDIF AAPAPQSTAT ANFANFAHFN
Predicted Reactivity:	Cow: 93%, Dog: 93%, Guinea Pig: 100%, Horse: 100%, Human: 100%, Mouse: 100%, Rabbit: 100%, Rat: 100%
Characteristics:	This is a rabbit polyclonal antibody against HRB. It was validated on Western Blot using a cell lysate as a positive control.
Purification:	Affinity Purified

## Target Details

Target:	AGFG1 (HRB)
---------	-------------

## Target Details

Alternative Name:	HRB ( <a href="#">HRB Products</a> )
Background:	<p>HRB is related to nucleoporins, a class of proteins that mediate nucleocytoplasmic transport. HRB binds the activation domain of the human immunodeficiency virus Rev protein when Rev is assembled onto its RNA target, and is required for the nuclear export of Rev-directed RNAs. The protein encoded by this gene is related to nucleoporins, a class of proteins that mediate nucleocytoplasmic transport. This encoded protein binds the Rev activation domain when Rev is assembled onto its RNA target and can significantly enhance Rev activity when overexpressed. Several alternatively spliced transcript variants of this gene have been described, but the full-length nature of some of these variants has not been determined.</p> <p>Publication Note: This RefSeq record includes a subset of the publications that are available for this gene. Please see the Entrez Gene record to access additional publications.</p> <p>Alias Symbols: MGC116938, MGC116940, RAB, RIP, HRB</p> <p>Protein Interaction Partner: NYAP2, POLE2, UBC, ALAD, P3H1, NIF3L1, PPME1, IPO11, SH3GLB1, LAP3, TPRKB, DBNL, HSPBP1, GPN1, ARPC1A, ZPR1, OGT, SURF2, LPP, VCAM1, ITGA4, SUCLA2, APP, EPS15, vpr, ITSN1, APC, RNF216, EPS15L1, PKIA, XPO1, AGFG1, VAMP7, CRM1, KAP104,</p> <p>Protein Size: 562</p>
Molecular Weight:	58 kDa
Gene ID:	3267
NCBI Accession:	<a href="#">NM_004504</a> , <a href="#">NP_004495</a>
UniProt:	<a href="#">P52594</a>

## Application Details

Application Notes:	Optimal working dilutions should be determined experimentally by the investigator.
Comment:	Antigen size: 562 AA
Restrictions:	For Research Use only

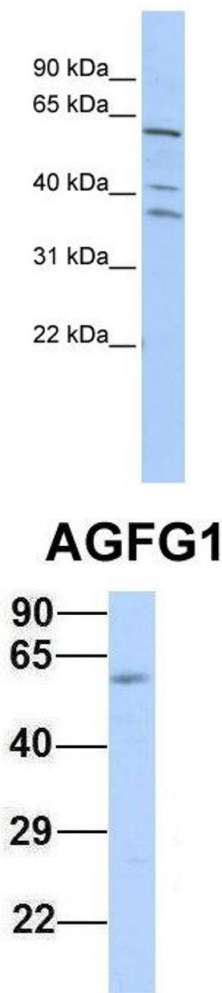
## Handling

Format:	Liquid
Concentration:	Lot specific
Buffer:	Liquid. Purified antibody supplied in 1x PBS buffer with 0.09 % (w/v) sodium azide and 2 % sucrose.

## Handling

Preservative:	Sodium azide
Precaution of Use:	This product contains Sodium azide: a POISONOUS AND HAZARDOUS SUBSTANCE which should be handled by trained staff only.
Handling Advice:	Avoid repeated freeze-thaw cycles.
Storage:	-20 °C
Storage Comment:	For short term use, store at 2-8°C up to 1 week. For long term storage, store at -20°C in small aliquots to prevent freeze-thaw cycles.

## Images

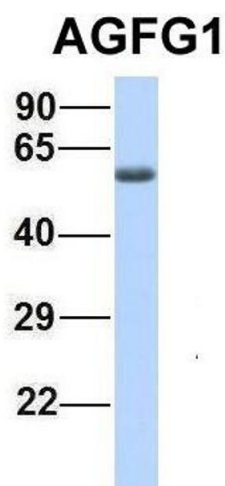


### Western Blotting

**Image 1.** WB Suggested Anti-HRB Antibody Titration: 0.2-1 ug/ml ELISA Titer: 1:62500 Positive Control: HepG2 cell lysate AGFG1 is supported by BioGPS gene expression data to be expressed in HepG2

### Western Blotting

**Image 2.** Host: Rabbit Target Name: AGFG1 Sample Type: Human Fetal Muscle Antibody Dilution: 1.0ug/ml



**Western Blotting**

**Image 3.** Host: Rabbit Target Name: AGFG1 Sample Type:  
Human Fetal Heart Antibody Dilution: 1.0ug/ml

Please check the [product details page](#) for more images. Overall 4 images are available for ABIN2778893.